

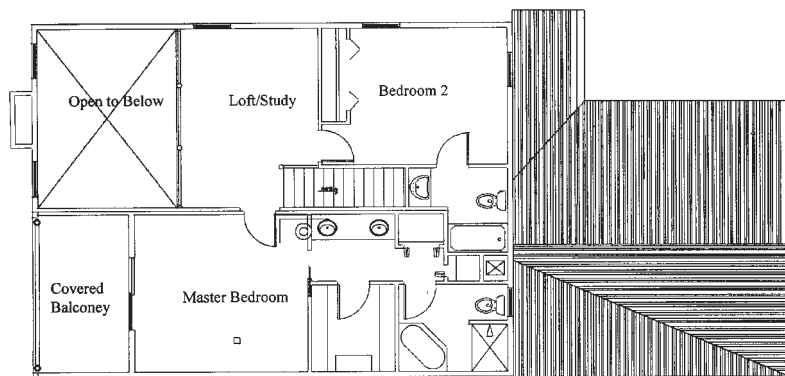
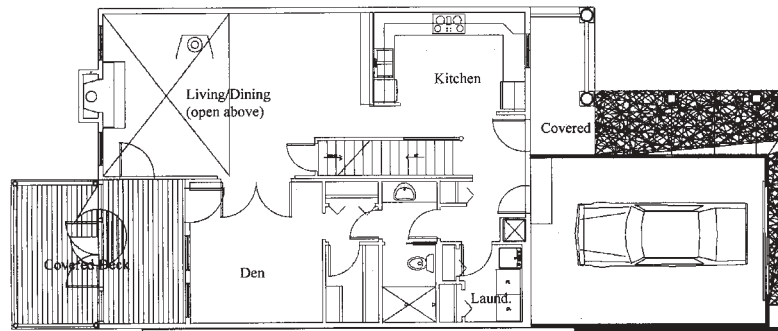
7208 Cherry Avenue Kewadin

Home 37



1,984 Square Feet
2 Bedrooms
3 Baths

Cottage Cove is a new lake front condominium development with its own private harbor on 23 acres located on the north shore of beautiful Elk Lake. Each unit has its own distinct appearance and character to create a community of two story townhouse style homes with attached garages. The model home is professionally decorated in the cottage style by Lauren Hanna Interiors. The inviting, but private entrance is via a covered walkway and porch. The large gourmet kitchen overlooks the 2 story great room with stone fireplace. The first floor den and living room both open onto a large private deck that overlooks your 28' boat slip. The second floor has a large master suite with a covered balcony. The generous loft overlooks the great room and leads to a second bedroom with its own private full bath. There is an optional second floor family room and finished basement available. In fact, there are many options to make these charming cottages truly personalized.



Jay Merchant Builders/BRL Development
Contact Kathy Wittbrodt, Piper Realty
212 River Street, P.O. Box 20 • Elk Rapids, MI 49629
(231) 264-0546 • License 2102149236

ALPERS INSULATION

345 E. WELCH CT., TRAVERSE CITY, MI 49686
SERVING NORTHERN MICHIGAN SINCE 1977

231-946-7450

RESIDENTIAL - COMMERCIAL - NEW & EXISTING
Blown Fiberglass & Cellulose - Fiberglass Batts Insulation
Spray Applied Cellulose & Foam - Block Fill Foam

hba05-alers



WELL DRILLING CO.

4" & Up Steel Wells
5" PVC Wells
Pump Sales & Service
Well Repair

Mark Zientek

John Zientek

NATIONAL WATER WELL ASSOC.

Certified Contractor

(231) 228-5678 Fax (231) 228-5637

223 E. Kasson Rd. • Maple City, MI 49664

hba05-bz



HOME BUILDERS ASSOCIATION

GRAND TRAVERSE AREA, INC.

2005 Parade of Homes and Developments Rules and Regulations

- No Smoking is allowed in the Parade Homes
- No Food or Drink is allowed in the Parade Homes
 - Children under one (1) year of age are free
- Strollers are Not Allowed in the Parade Homes
 - Removal of shoes is Not permitted -
Use booties, if provided, at the Parade Homes
- Please Do Not park or trespass on adjacent property
 - No Public Restrooms

hba05-Filler

RecordEagleREALESTATE
.com

Find It More detailed information than
any other local real estate site

To advertise on our site, call

Tom Wyatt 231-933-1457

Lori Popard 231-933-1451



Quality building supplies since 1894...



2981 Cass Road, Traverse City, Michigan
Six additional locations throughout Michigan

hba05-eikenhout

Toll Free 800.538.6336 • Phone 231.947.1550
Fax 231.947.1551 • www.eikenhout.com

architectural
elements

of Michigan, Inc.

*Congratulations to all the
Parade of Homes
Builders*

Architectural Elements features these fine products
& services for contractors & home owners:

- Design Services & Interior Space Planning
- Custom Cabinetry & Fine Woodworking
 - Manufactured Cabinets
- Windows, Doors & Skylights

www.arch-elements.net

Corporate Office > 1200 W. 11th St., Ste. 218
Traverse City > 231.995.9700

Design Center > 13975 S. Robinson Road

Toll Free > 866.995.4333

10067 S. W. Torch Lake Drive Rapid City

Home 38

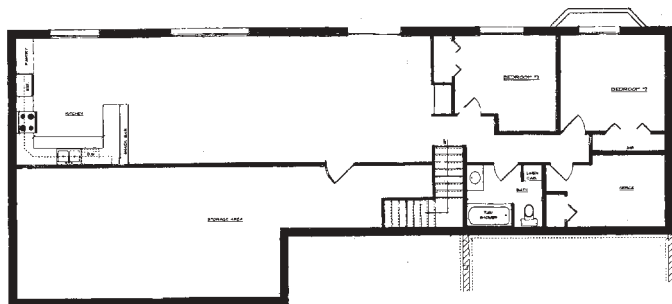
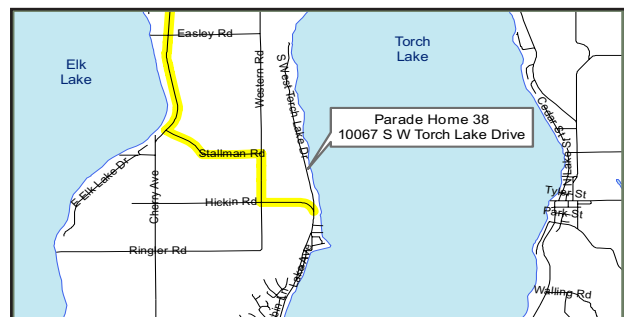
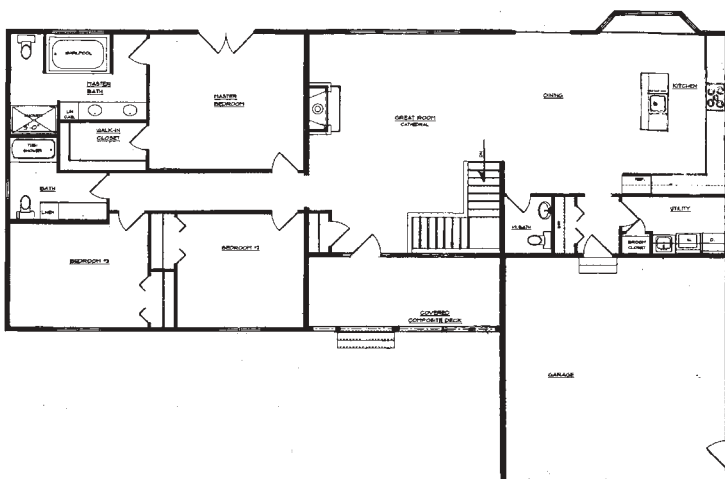


2,200 Square Feet
3 Bedrooms
2½ Baths

Enjoy spectacular sunrises on beautiful Torch Lake from this exquisite walk-out ranch on 100' of gorgeous waterfrontage. The true feeling of "Michigan Up North" abounds from this cedar and stone Parade Home with great attention to quality throughout. The large cathedral great room features "Touch of the North" paneled ceiling with lots of recessed lighting, a massive fieldstone fireplace, and a two story palladium window overlooking beautiful Torch Lake. The great room openly flows into a grand gourmet kitchen, dining room with antique maple floors. The kitchen offers black granite countertops and snack bar, a five burner thermidor gas cooktop, Bosch dishwasher and beautiful custom maple cabinetry as well as a large angle bay window and window seat overlooking the water. French doors from the dining room lead to an expansive deck that runs the entire length of the home.

The large master suite faces the Lake with French doors leading to the deck. The spectacular master bath features granite countertops with custom stone tile surrounding the whirlpool tub. The entire shower is done in matching custom stone tile and the sinks are made of dramatic stone set in granite countertops.

The optional finished lower walk-out has been designed as an entire separate living area. It includes a full kitchen, large family room, 2 bedrooms, large bathroom, plus a laundry room, and storage room. Finishing the lower level increases the living area to 4400 sq. ft. Other features of this tremendous quality home include 9' ceilings throughout, Pozzi windows, Kohler plumbing fixtures, custom designed landscaping for enjoyment of the lake and a separate matching cedar and stone outbuilding for storage.



DLH Builders

Ryan Hill

7624 S.E. Torch Lake Drive • Alden, MI
(231) 564-4678 • License 2101156552



Thank You to Our Supporters

<p>AB-TEC Alpers Insulation, LLC Architectural Elements of Michigan Artec Window & Door, Inc. B & Z Well Drilling Bay Shores Construction Blue Ridge Construction Boardman Pond Development DesignCraft Home by Duensing Drywall Dynamics, Inc. Eastwood Custom Homes Eikenhout, Inc. Elmers Crane and Dozer, Inc. E-Scape Art Glass Etna Supply Ferraro Builders, Inc. Fifth Third Bank First Class Closets Ford Insurance Agency, Inc. Four Seasons Sunrooms & Glass, Inc. G T Development GeoFurnace Heating & Cooling Gosling Czubak Engineering Gourdie-Fraser</p>	<p>Grand Traverse County Recycling Solid Waste Grand Traverse Title Agency Heritage Wood Floors Specialist Huntington Mortgage Group Independent Bank Jay Merchant Builders, Inc. K M Kellet, Inc. Kerkstra / Spancrete Great Lakes KlingelSmith Construction, Inc. Larkin Insurance Group Lighting Center Long Lake Estates Machin Contracting, LLC Martinek Framing Max's Service Merit Construction Michigan Lake Products, Inc. Mission Bay Construction Molon Excavating, Inc. Morgan Farms North Shore Construction & Development, LLC Northwest Michigan Contractors Old Mission Windows</p>	<p>Olde World Custom Homes, LTD Pioneer Construction, Inc. Pure Water Works R W Popp Excavating R Widing Construction, Inc. Red Management Sean McCardel Construction Seniors Heating & Cooling, Inc. Silverwood Enterprises Smart Systems, Inc. Standard Kitchens Steele Development Steinorth Fine Homes T C Insulating Company T C Mirror & Shower Door, Inc. Traverse City State Bank Traverse City Record-Eagle Trillium Shore, LLC United Building Centers Wheeler Construction, Inc William Jahacke, Inc. Williams Kitchen & Bath Wolohan Lumber Company Wooden Hammer, LTD</p>
-------------------------------------------------------------------------------------------------------------------------------------------------------------------------------------------------------------------------------------------------------------------------------------------------------------------------------------------------------------------------------------------------------------------------------------------------------------------------------------------------------------------------------------------------------------------------------------------------------------------------------------------------------------------------------------	---------------------------------------------------------------------------------------------------------------------------------------------------------------------------------------------------------------------------------------------------------------------------------------------------------------------------------------------------------------------------------------------------------------------------------------------------------------------------------------------------------------------------------------------------------------------------------------------------------------------------------------------------------------------------------------------------------	------------------------------------------------------------------------------------------------------------------------------------------------------------------------------------------------------------------------------------------------------------------------------------------------------------------------------------------------------------------------------------------------------------------------------------------------------------------------------------------------------------------------------------------------------------------------------------------------------------------------------------------------------------------------------------------------

2005 Board of Directors

PRESIDENT

Sally Erickson Bornschein
POM Associates, Inc.
6660 Mission Ridge
Traverse City, MI 49686
(231) 947-0701

1ST VICE PRESIDENT

Jim Provo
ProvoCo
P O Box 6646
Traverse City, MI 49696
(231) 932-0442

2ND VICE PRESIDENT

Michael Ferraro
Ferraro Builders, Inc.
4820 Lands End
Traverse City, MI 49686
(231) 933-6089

SECRETARY

B J Stark
Wolohan Lumber Company
5700 US-31 South
Grawn, MI 49637
(231) 943-9299

TREASURER

Mike Farrer
Grand Traverse Title Agency
116 Boardman Avenue
Traverse City, MI 49684
(231) 946-5688

DIRECTORS

Rex Ambs
GeoFurnace Heating & Cooling, LLC
886 US-31 South
Traverse City, MI 49684
(231) 943-1000

Mike Bartkowiak
Williams Kitchen & Bath
1701 South Airport Road West
Traverse City, MI 49684
(231) 943-7801

Charles Drouillard
Rapid River Rustic Log Homes
P O Box 897
Bellaire, MI 49615
(231) 377-4663

Bonnie Lautner

Twin Bay Glass, Inc.
418 East Eighth Street
Traverse City, MI 49686
(231) 941-7112

Roger Papineau

Roger Papineau Builder
1901 Beulah Highway
Beulah, MI 49617
(231) 882-5486

Jennifer Steinorth

Steinorth Fines Homes
1013 Webster Street
Traverse City, MI 49684
(231) 947-8923

Roger Thompson

Huntington Mortgage Group
415 Munson Avenue
Traverse City, MI 49686
(231) 922-5863