

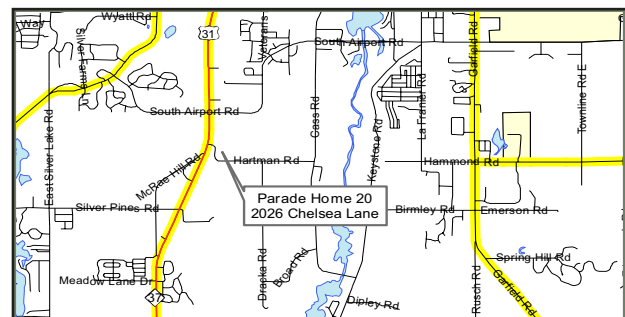


1,566 Square Feet  
2 Bedrooms  
2½ Baths

This exciting new neighborhood is being introduced at the Parade of Homes. It is a Master Planned Community that offers a quaint country setting steps away from the activities of a shopping district.

The Coventry Model, featured in Chelsea Park, offers an owner a quiet country setting with a contemporary convenience...

- Quality, stain-resistant carpeting by Shaw & Mohawk
- Designer light package
- Elegant 6 panel Colonist interior doors
- Fire-suppression system throughout - professionally monitored
- A wide array of finishings to personalize your home
- Private consultations with our Home Selections Specialist



**G.T. Development**

John Watson

4144 US 31 South • Petoskey, MI 49770

(231) 348-3084 • License 2102173295

[www.2NorthernMichigan.com](http://www.2NorthernMichigan.com)

# 2028 Chelsea Lane, Bradford Traverse City

# Home 21

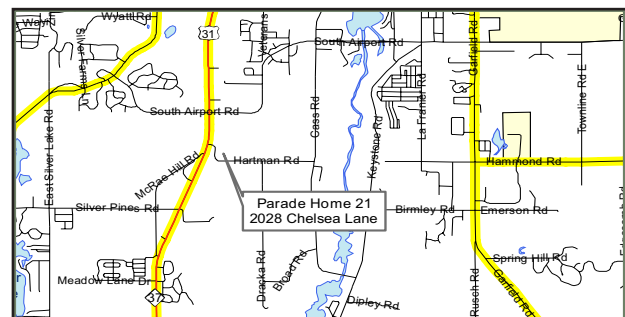


1,571 Square Feet  
2 Bedrooms  
2½ Baths

Nestled in an Old Cherry Orchard is where you will find Chelsea Park's "Bradford" model. This plan offers colonial style living with a contemporary flair.

- Master bedroom suite
- Large walk-in closet
- Main floor laundry
- Volume ceilings
- Six panel doors
- Friendly kitchen
- Dining room
- Large pantry.

The Bradford model is sure to appeal to young professional couples, empty nesters and busy families.



## G.T. Development

John Watson

4144 US 31 South • Petoskey, MI 49770

(231) 348-3084 • License 2102173295

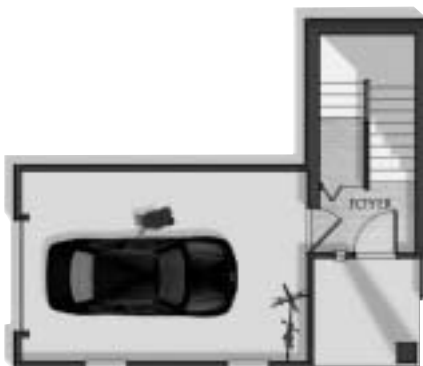
www.2NorthernMichigan.com



1,335 Square Feet  
2 Bedrooms  
2 Baths

G.T. Development Co. is proud to present its first Parade Home. The Ashton is a comfortable style condominium home with classic details and unsurpassed craftsmanship.

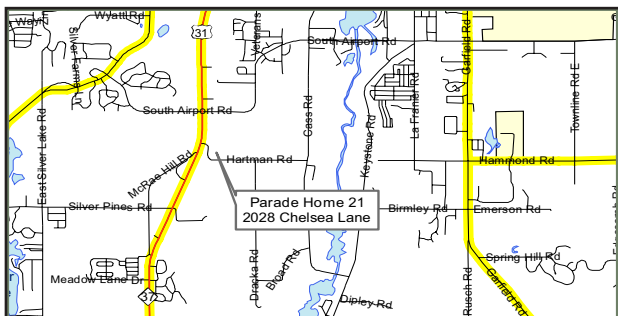
- Volume ceilings
- Six panel doors
- Walk-in closet
- Friendly kitchen
- Dining room
- Large pantry.



FIRST FLOOR



SECOND FLOOR



**G.T. Development**

John Watson

4144 US 31 South • Petoskey, MI 49770

(231) 348-3084 • License 2102173295

www.2NorthernMichigan.com

# TC MIRROR & SHOWER DOOR INC.

- Complete Shower Door Service
- Heavy Glass, Frameless Enclosures
- Our Specialty
- Quality Mirrorwork

**Interior Glass Specialists**

Phone: 231-922-2162  
Fax: 922-2244

hba05-tcmirror

# LARKIN

INSURANCE GROUP, INC.

"Since 1942"

- ▀ Workers Compensation
- ▀ Blue Cross Group Program
- ▀ Contract Bonding
- ▀ Property & Liability
- ▀ Automobile
- ▀ Builders Risk
- ▀ Homeowners
- ▀ Personal Insurance



Sandy Reimer • Rose Thompke

*"If we don't write your insurance... maybe its time for a second opinion."*

231-947-8800

310 W. Front Street • Suite 101  
Traverse City, MI 49684



## WIDING CUSTOM HOMES

*Elegant Homes Since 1976*

2102148836

934-B S. Garfield Ave. • Traverse City, MI 49686 • 231-933-6680 • fax: 231-933-6682 • website: [www.rwiding.com](http://www.rwiding.com)