

664 Hidden Ridge Traverse City

Home 6

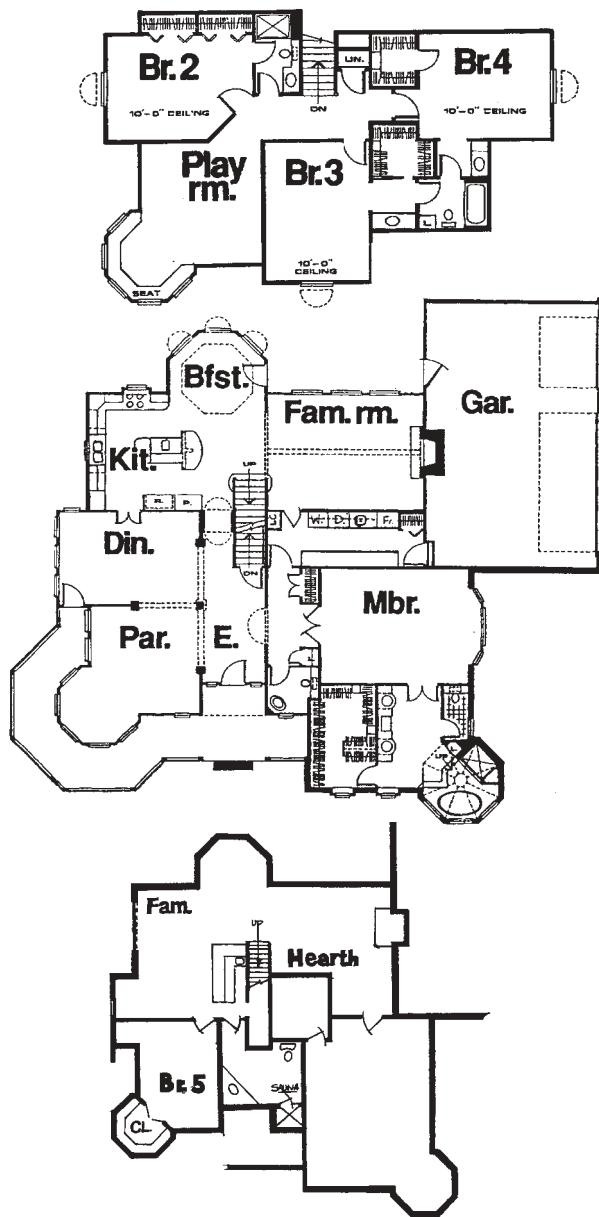


5,422 Square Feet
5-6 Bedrooms
4½ Baths

This exciting addition to an already incredible area of Old Mission Peninsula on East Bay is only a half-mile from the city limits. The setting is in a quiet neighborhood of both modest and upscale homes. This Parade Home is adjacent to a peaceful 6-acre sanctuary and just steps from the relaxing sounds of East Bay. We melded a historical Victorian design with an open living, contemporary floor plan. It is as comfortable as it is charming.

This storybook home with an expansive covered wrap-around front porch enhances the beginning of uncompromised excellence in craftsmanship and design. Beyond the solid walnut front entry door lays deep rich Brazilian walnut flooring with a beautiful exotic inlay. Massive pillars subtly divide the parlor from the formal dining area with a crafted coffered ceiling above. Just beyond the formal dining area, the gourmet kitchen and family congregation area are all complimented with granite tops on custom cabinetry that reach up to the deep earthy tongue and groove ceiling. The spacious cathedral great room has large windows with rays of sun beaming in from the southern exposure and a stunning stone hearth is surrounded by custom built-in cabinetry. The three-car garage is located at the rear of the home with an entry to the mudroom and laundry facility.

Tranquility and a place for reflection is certain to be found in the master suite that is complimented by a full bath and walk-in closet all below a cathedral ceiling that will mesmerize its inhabitants. From the heated limestone floors to the Infinity Soaking tub, this area will leave one timeless. The upper level has three spacious bedrooms all with large closets and well-appointed bath arrangements. A media room with a 270° bay view has comfortable built-in window seating and cabinetry. The lower level walkout of this home features a game room with a custom wet bar, a family size bathroom complimented with a steam room. This home has been tastefully furnished by Lauren Hanna of Traverse City. Please come visit this AB-TEC home and get your feel of the care, craftsmanship, and commitment to quality.



AB-TEC
Brian Guswiler
P.O. Box 169 • Traverse City, MI 49685
(231) 620-3000 • License 2102148748

Charming Neighborhood Setting with Extraordinary Values.



Traditions at Ashland Park

This is your opportunity to buy a new home in a traditional neighborhood setting! New to Traverse City, Traditions at Ashland Park has an incredible selection of homes to fit any lifestyle. Traditions is designed to create a feeling of comfort, safety and belonging.

- Charming, distinctive architectural home designs
- Home sizes ranging from 1200-2500 sq. ft.
- Options available for kitchen, floors and bathrooms
- Neighborhood parks and open spaces
- Walkable and safe community plan
- Just minutes from downtown, on Garfield Avenue



Visit the Red Management Design Center:
120 Lake Avenue, Traverse City

Call for an appointment

(231) 218-5467 - Barb

(231) 590-8066 - Jacquie

traditions-ashlandpark.com



Starting from the
\$150,000's

Special Offer

The first 20 reservations
will receive complimentary
upgrades worth \$2000.

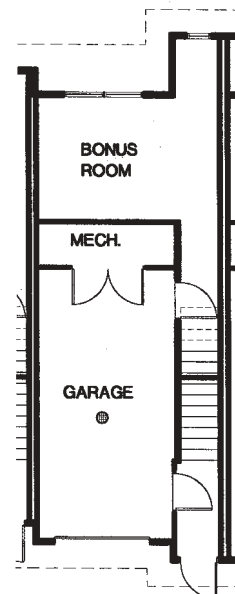
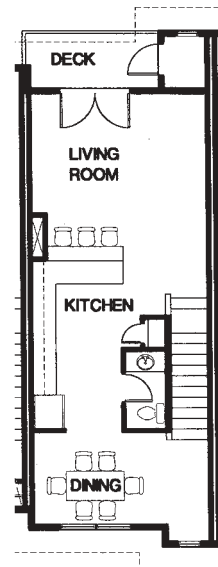
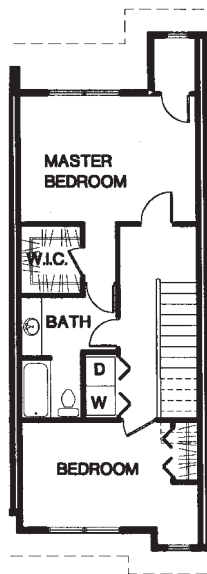
247 Midtown Drive Traverse City

Home 7



1,623 Square Feet
2 Bedrooms
1½ Baths

The idyllic location of this contemporary townhome offers residents peaceful, enjoyable, and convenient living. Views from the decks overlook some of Traverse City's finest historic architecture, and residents will have direct access to the city's river-walk. Attractive on the outside, the interiors are stylish, thoughtfully designed, and include numerous distinctive features. Amenities include hardwood floors, private deck overlooking the river, open and spacious floor plan, fully equipped gourmet-style kitchen, large windows, a single-car garage, and many cafes, restaurants and shops nearby. Owners can choose finishes, flooring, fixtures, and appliances for their home from the many options that are available.



Red Management

Timothy Burden

229 Lake Avenue • Traverse City, MI 49684
(231) 929-9060 • License 2102138058

Outdoors Living... Indoors™



With 18 different styles to choose from, we can design the perfect sunroom to compliment your home, lifestyle and price range.



Independently Owned and Operated
5704 US-31 North • Acme
(1 Block south of M-72)

Call for a Free Information Packet or In-Home Design Estimate
(231) 938-3300 or (800) 522-8080

Visit our web site... www.four-seasons-sunrooms.com

hba04-fourseasons



Terry Harper

(231) 932-1867, THARPER@IBCP.COM
315 N. DIVISION, TRAVERSE CITY

Grand Traverse Area *Full Service Mortgage Lender*

Specializing in Building Site & Construction Lending



Large enough to serve you. Small enough to know you.
www.independentbank.com



*Real estate financing provided by Independent Mortgage Company.

4228 Eagle Vale Traverse City

Home 8



1,900 Square Feet
3 Bedrooms
2½ Bath

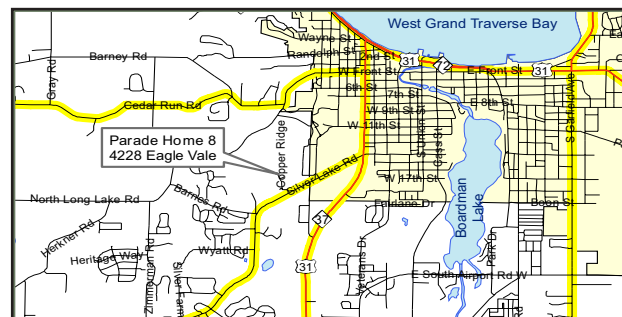
Eagle Vale Condominiums of Traverse City offers superior quality and value with customer service to match. Luxurious 3 bedroom, 2 ½ bath, 1900 sq. ft. condominiums placed in a private community with only 9 single dwelling units to be built. This rare near-town location is within five minutes of the hospital, shopping, beaches, the downtown district, restaurants, and movie theatres. Eagle's View Homes offers main floor living with a spacious master suite that includes a walk-in closet and a generous master bath. For additional convenience we have added a main floor laundry and a beautifully designed kitchen that opens into the dining and living area. A variety of cabinetry styles and finishes are available. This unit offers a finished and insulated garage and a full basement. The highest design and quality standards have been strictly adhered to with pride in the architectural design and structure.



MAIN LEVEL PLAN



SECOND LEVEL PLAN



Authentic Homes, Inc.
Steve Tucker
P.O. Box 75 • Lake Ann, MI 49650
(231) 620-6565 • License 2102166235



Custom fabricators of high quality vinyl deck & rail systems. The perfect maintenance free solution for residential and commercial decks & rails.



hba05-michiganlake

For more information on MLP's quality vinyl products and services, contact representative LeRoy R. Ostlund, C.G.R.
 231-947-5557 (Home) • 231-218-5550 (Cell)
 11456 S. U.S. 31 • Elk Rapids, MI • 231-264-8002 or 800-968-3625

TEAM
Elmer's
Elmer's

943-3443
 3600 RENNIE SCHOOL RD
 TRAVERSE CITY MI 49684
 www.teamelmers.com

RESIDENTIAL • COMMERCIAL • INDUSTRIAL

"GET A LOAD OF THIS!"

Building Better Communities Since 1956

2102053411

hba05-elmers

4158 Eagles View Traverse City

Home 9



2,722 Square Feet
4 Bedrooms
2½ Baths

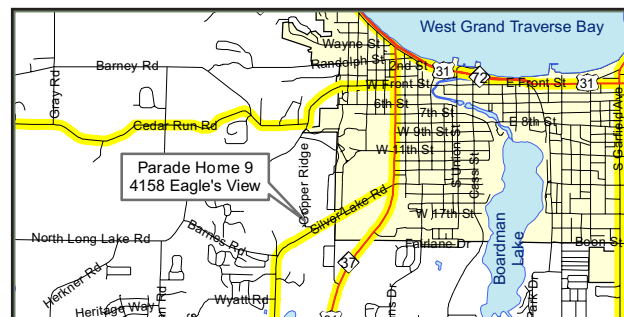
Eagle's View Homes of Traverse City offers superior quality and value with customer service to match. This luxurious home is in a rare near-town location and is within five minutes of the hospital, shopping, beaches, the downtown district, restaurants, and movie theatres. Eagle's View Homes offer main floor living with a spacious master suite that includes a walk-in closet and a generous master bath. For additional convenience we have added a main floor laundry and a beautifully designed kitchen that opens into the dining and living area. The highest design and quality standards have been strictly adhered to with pride in the architectural design and structure.



MAIN LEVEL PLAN



LOWER LEVEL PLAN



Authentic Homes, Inc.

Steve Tucker

P.O. Box 75 • Lake Ann, MI 49650
(231) 620-6565 • License 2102166235

Build with Eastwood.

Superior Choices.

Choose a house plan that fits your family's needs and budget. Let us build your new home!

**New Eastwood homes
available for
immediate occupancy!**



Or select your ideal lot in:

HOLIDAY FOREST
Holiday Hills Area

HERITAGE ESTATES
Traverse City West

CENTER PLACE
SW Grand Traverse County

NORTHERN ESTATES
Interlochen Area

Coming Soon...

LA HEIGHTS - Almira Twp.
TIMBER TRACE - Long Lake Twp.
BOBBY'S PLACE - Long Lake Twp.

Ask about our special programs!

VETERAN'S PROGRAM

Special discounts for veterans*

TRADE-IN PROGRAM

Trade-in your existing home for a new Eastwood home*

ZERO DOWN PROGRAM

home financing with no downpayment*

**Certain Conditions Apply*



Eastwood
Custom Homes, Inc.

231-929-HOME (4663)

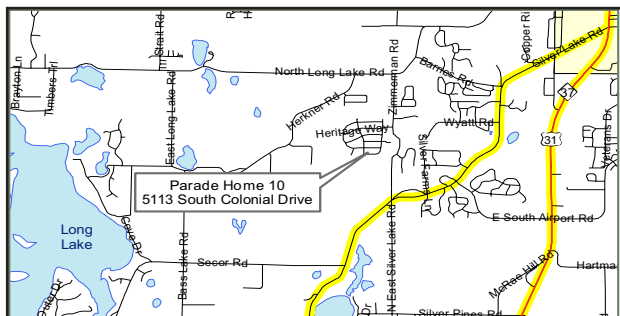
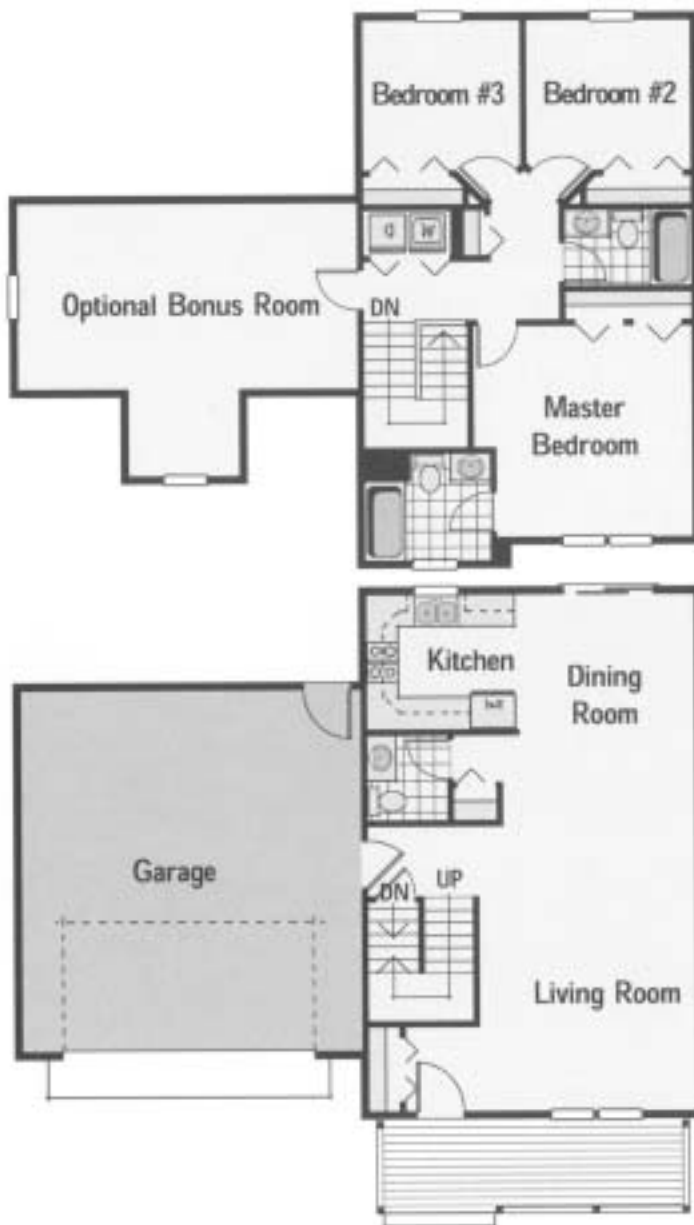
eastwoodcustomhomes.com



1,510 Square Feet
3 Bedrooms
2½ Baths

The Baldwin:

Eastwood Custom Homes 2005 Parade Home is the newly designed Baldwin model. This is an attractive two story home with a great layout. The main level of the home provides an open family living room, dining room, kitchen and a half bath. The second floor features three bedrooms, two full baths and laundry facilities, with access to a bonus room above the two-car garage for future finish. An unfinished basement with underground rough plumbing allows for a future bath. This home offers great accessibility and movement from room to room. The Baldwin also includes a paved driveway, window grills on the front side of the house, architectural shingles, 2-piece fascia, heavy exterior trim, a rear deck, and a front porch with railings. This home provides quality family living in a convenient west side Traverse City location.



Eastwood Custom Homes

Jim Williams

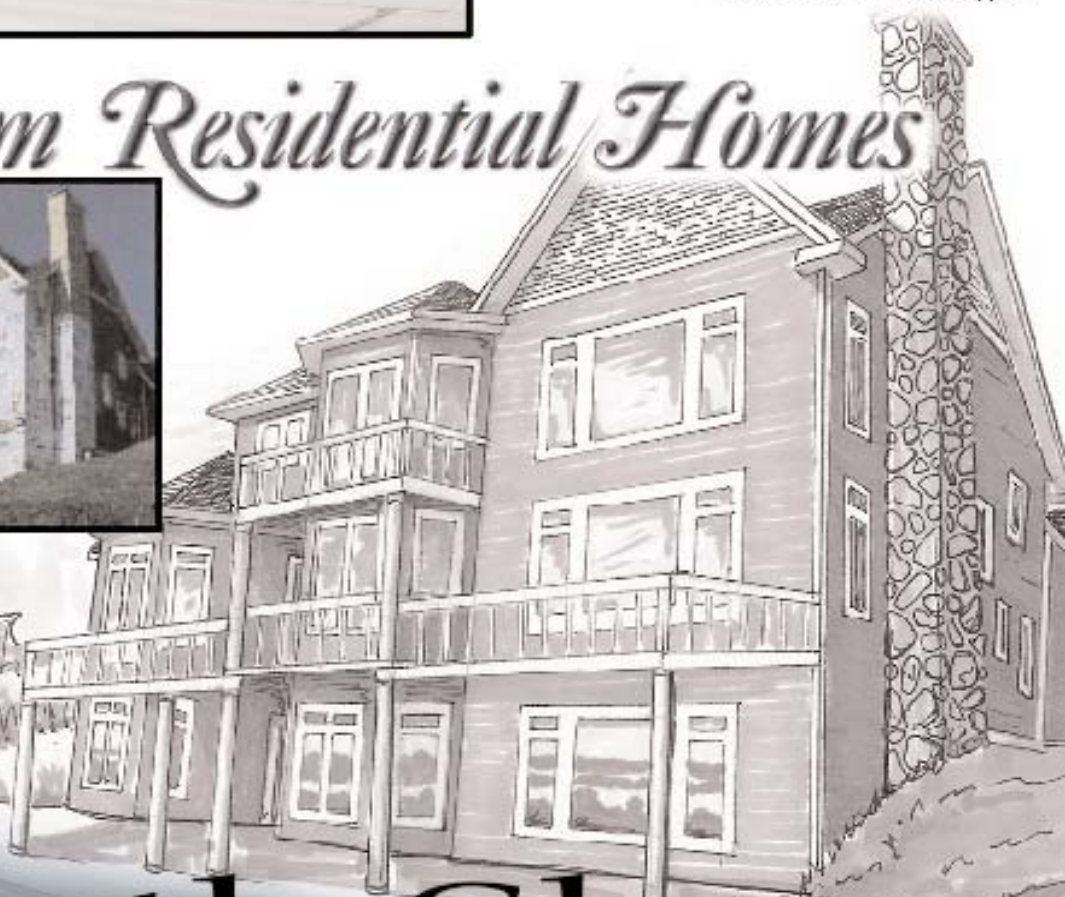
213 South Airport Road West • Traverse City, MI 49686
(231) 929-4663 • License 2102063095

Upscale Commercial Space



Since 1994, North Shore Construction & Development remains true to our founding values that our customers are entitled to a project which is completed with quality workmanship, is on time and within budget.

Custom Residential Homes



North Shore

CONSTRUCTION & DEVELOPMENT
LLC

830 East Front Street, Suite 300 • Traverse City, MI 49686
Office: 231.946.5702 • Fax: 231.941.2050
www.northshoreconstruction.net