

# Prime Quality Log Home



*Upper Peninsula, Michigan*

IF ROLLS ROYCE BUILT HOMES...they simply could not surpass this elegant, custom log home on ten acres of land with 173' of Lake Superior sand beach frontage located 30 miles East of Marquette. Four bedrooms, 2 full baths, two 2 car garages with an apartment for guests located above one of the garages. 2,668 square feet of living space includes a "curly maple" staircase leading to the Master Suite. Frank Lloyd Wright style Hickory cabinets in the modern kitchen give a functional balance of beauty, comfort and convenience. A library, a family room and a hot tub room with skylights are a few of the additional amenities in this Fine Home. \$595,000. 172½' of additional frontage available.



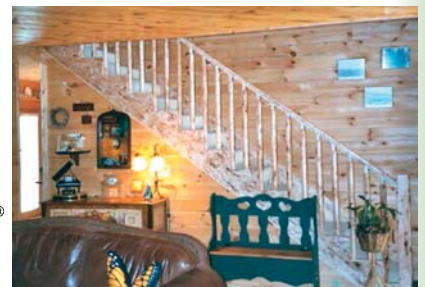
**CAROL VINING MOORE**

Office: 906.228.9455

Cell: 906.360.2633 • Fax: 906.228.7954

Century 21 Prime Realty

329 West Washington Street • Marquette, MI 49855



5-2.HD.793722

## Customize your home to better reflect YOU



**Let us add space or update  
so you're prepared for  
the special times in life.**

Call us to discuss the possibilities.

**231-267-4800**

**Garages  
Additions  
Basements  
Kitchens  
Decks**



**RICHARDSON  
BUILDING CO.**

*Built on Integrity*

[www.RichardsonBuildingCompany.com](http://www.RichardsonBuildingCompany.com)

