



RECORD EAGLE

Golf Directory

2005

Supplement to the
Traverse City Record-Eagle
www.record-eagle.com

"Golf a Great Pair in Bellaire"

*Unlimited Golf & Lodging
Packages starting at \$169*

2 Great Courses & 2 Nights in a Golf Course Cottage

Rates from \$55

Rates from \$45



HAWK'S
EYE



CHIEF

Tee Times Call 800-257-9810

www.golfhawkseye.com

www.golfthechief.com

Package Info./Reservations 888-275-0100



A-GA-MING
GOLF RESORT

"Overlooking Beautiful Torch Lake"

★★★★ Golf Digest Rating

**NEW 36 Hole
Sundance Course
Opens June 1**

RATES (w/cart):

Spring \$34

Summer \$49-79

Twilight \$34-49

*\$10 Junior Rates

(after 4pm, 14 and under)

*Play and/or stay at A-Ga-Ming where views of
beautiful Torch Lake are par for the course.*

(877) 678-0125 or (231) 264-5081

www.A-Ga-Ming.com

Located 9 miles N. of Elk Rapids off US 31

STEAK *and* PLAY

King's Challenge
An Arnold Palmer Designed Course



\$42

(Sunday Noon-Thursday until May 26)

\$52

(Sunday Noon-Thursday May 27-June 29)

Includes golf on 18-championship holes and dinner at
STEAK-HAUS AT KING'S CHALLENGE,
Leelanau County's only steakhouse.

Tee Times or Steak & Play Packages
231-228-7400 • www.kingschallenge.com

Located off M-22 between Glen Arbor and Leland

4-24.GF794857



Sleeping Bear
Leelanau County's
Original Golf Course
is its most affordable!

May Midweek \$28 Until May 26

May Weekend \$33

1-888-228-0121 or 231-228-7400

*Located near Cedar, 18 miles Northwest of Traverse City
on Sugar Loaf Mountain Road*



4-24.GF.794857

Eye on the sky

Weather key to successful season

BY MIKE TERRELL

Special to the Record-Eagle

TRAVERSE CITY — Ask area golf managers what the most important thing is to key a successful golf season, and almost all of them will say the weather.

"The last three Mays have been absolutely terrible to the golf business," said longtime High Pointe pro Ben Croftchik. "The weather is the key to our having a successful season. People were leaving town during the Cherry Festival last year, because it was cold and wet in July. That should be a busy time for our business, and it wasn't."

Dave Taberski, head pro and part-owner at The Crown Golf Course, agreed.

"We were down last season a little bit like most area courses, but we had a great September," he said. "That was probably our nicest month of the summer and the golfers came out in force. We are a weather related business."

The high cost of gas was mentioned as a minor factor in influencing the outcome of the season.

"If we have a good hot summer the golfers from downstate will be up here," said Croftchik. "I don't think the few extra bucks they spend on gas will keep them from coming."

"Attendance at the downstate golf shows was good, and many were making plans for a trip north this summer."

April has been kind to the golf business, coming in like a lamb. Many courses opened ahead of schedule.

"The weather has really been cooperative so far this spring," said Crystal Mountain spokesperson Joan O'Neill. "We closed for skiing at the end of March, and the next day we were able to open our Betsie Valley Course for the golf season. It doesn't always work out that well."

"Package reservations, also a good indicator for the coming season, are looking good," she added.

Following is a selective look at some of the courses around the Grand Traverse region and what to expect for this season. A few have made some major improvements and most are running spring specials now through the end of the month; some carrying over into May. It's a great time of

year to get out and play before the summertime crowd arrives.

~ The big news among area courses and resorts is the opening of A-Ga-Ming Golf Club's second 18-hole course (see related article). A Jerry Mathews design, it's slated for an early June opening. In the meantime they are running an early season \$25 special for 18-holes with cart on The Torch that is good through the end of the month. For tee times call (231-264-5081).

~ Another local Mathews-designed course,



Hawk's Eye in Antrim County

Mistwood, made some major additions during the off season that will continue into the summer; not to the 27-holes they presently have, but in the way of amenities (see related article).

Mistwood spring rates through May 19 are \$41 for 18 holes with a cart and \$59 for all 27 holes in one day. Mistwood, boasting 13 golf leagues with over 400 players, has always been a popular course with local golfers, but with three nine-hole courses there is always room for public play. To reserve a tee time, call (231) 275-5500.

~ One of the region's oldest golf courses, Interlochen, also made some major off-season improvements.

"We removed over 200 trees making the course much more user friendly, and also added some length moving the tee boxes back to around 6,600 yards," said owner Tony Kochevar. "It really opened up some of the fairways that were pretty tight before."

The course is 41 years old, and Kochevar has owned it for the last 25 years.

"We've made some major improvements over that time actually lengthening the course by almost 1,600 yards," he added. "That wasn't easy with limited land space, but I'm proud of what we've achieved; especially the latest renovations."

Interlochen Golf Course is running a \$20 mid-week special for 18-holes with cart through April. It's \$25 on the weekends. For tee times, you can call (231) 275-7311.

~ The region's other 40-year-old course,

Continued on Page 18

Open titles on line

Roth, Snider are defending champs

TRAVERSE CITY — J.R. Roth entered the final round of the Michigan Open one shot off the pace.

Stacy Snider found herself two shots back in the Michigan Women's Open on the last day.

Both, however, rallied to win championships in two of the state's most prestigious tournaments.

The Michigan Open returns to Grand Traverse Resort and Spa in June, followed almost a month later by the Michigan Women's Open at Crystal Mountain Resort.

Roth claimed his second Michigan Open title against a field of up-and-coming mini-tour golfers — and with his 13-year-old son, Justin, as his caddy.

"I can't believe it," said Roth, who fought back tears after claiming a three-stroke victory over Eric Jorgenson and Mike Austin last year. "I never take anything for granted.

"The competition is getting stiffer and stiffer every year," he said. "I appreciate the quality of the field I beat. There are just so many good young players.

"You can name six or seven guys who are going to be great players, so to catch them when they're playing well and to beat them, that's really special for me."

Roth, 46, entered the round in second place, one stroke behind Grandville's Jorgenson. But he quickly leap-frogged the former Michigan State standout with birdies on his first two holes, and Roth pushed his lead to three strokes by the time he reached the turn. No one ever got closer.

Roth finished with a bogey-free 68 on The Bear, dropping his tournament score to 12-under 276. Mini-tour players Jorgenson, who shot 72, and Austin, who matched Roth with a 4-under 68, finished at 9-under 279.

"To shoot a 276 on this golf course is, I think, just remarkable, and for it to be me is even more

remarkable," said Roth, of West Bloomfield's Knollwood Country Club. "I'm just thrilled to win, especially with that score."

With the victory, which was worth \$13,000, Roth pushed his state tournament winnings to more than \$250,000 since 1990. He has four Michigan PGA Championship titles and three Tournament of Champions crowns in addition to his two Open titles.

Snider, energized by some putting tips from Brad Dean, Crystal's director of golf, rallied to win the 11th annual Women's Open by defeating Californian Amy Malinaric with a birdie on the first hole of a playoff.

Asked if she would have won the tournament, and the \$5,000 first-place check - without Dean's help, Snider's answer was a succinct "No."

"I really appreciate his help," said the 24-year-old Snider, a Futures Tour player who has conditional (alternate) status on the LPGA Tour.



Stacy Snider

Continued on Page 13

Introducing...

Lakeview Ridge at Agaming Golf Resort

14 Private Residential Homesites overlooking beautiful
Torch Lake

Offered exclusively by Exit Realty of Elk Rapids
Call The Exit Team for more information



231-264-9833 or 866-366-EXIT
www.exitrealtyofelkrapids.com



Companion course

A-Ga-Ming to open a second 18 holes

BY MIKE
TERRELL
Special to the
Record-Eagle

KEWADIN
— The golf
course con-
struction
boom of the
1990s —
when the
state of
Michigan led
the nation in
new course
construction
is long over —
but that didn't
stop A-Ga-



The new Sundance course at A-Ga-Ming

Ming Golf Club from forging ahead with the construction of its second 18-hole course.

The new Sundance course, designed by one of Michigan's best known golf architects Jerry Matthews, is slated to open in early June. It will join the club's other 18-hole course The Torch, which made its debut in 1986. That was designed by former PGA champion Chick Harbert and developed by then owner Bill Siebenthaler.

The new course, which was built just to the west of The Torch, is along the same rolling bluffs that offer such great views of Torch Lake from the present course.

"You'll not only still get some great views of Torch Lake from Sundance, but it's opened up some spectacular views of Grand Traverse Bay as well," enthused owner Mike Brown, who along with his partner Larry Lavelly took over the reigns of A-Ga-Ming in 1996. "We saw a need for a second course, interest rates on borrowed money were low, and we forged ahead with the new development.

"We were sending our package customers off to other courses because golfers like variety," he explained. "It seemed the right time to develop a second course and offer them more variety at A-Ga-Ming Golf Club instead of sending them off elsewhere."

The new Sundance course involves a combination of rolling link-style terrain and northern Michigan hardwoods.

"It's a very open links-style course that is comparable to Forest Dunes, the Tom Weiskopf course east of Grayling, or Gary Player's Wolverine at Grand Traverse Resort," said Brown. "That's heady company, but I think they are most like what

golfers will experience when they play Sundance."

With its more open layout he feels that it will appeal to a wider segment of the golfing public.

"It's not as tight as The Torch. The average golfer will be able to spray a few balls around the course, but still be able to recover," offered Brown. "It's a very playable course, even though there is a lot of sand on it."

Matthews, who's designed nearly 100 courses with most of them being in Michigan, laid out the course to appeal to a wide variety of golfers.

"This is one of the best properties I've worked with," said Matthews. "I'm constantly surprised at how many places you can be on the golf course where the views are absolutely amazing. I've just accentuated what Mother Nature had already put here."

From the tips the new Sundance course will measure around 7,000 yards down to a very manageable 5,000 yards from the forward tees, according to PGA pro Lavelly.

"We want it to appeal to all skill levels," he added. "We will have five sets of tees so the golfer can pretty much customize the yardage to a comfortable distance."

Sundance will feature fescue-covered mounds, wide fairways, large greens, 110 strategically placed bunkers, large ponds, wetlands and a couple of huge waste bunkers.

"The course kind of dazzles you with its views and topography," added Brown.

Both owners feel that No. 17 is probably their signature hole.

"It's a picturesque 210-yard, par-three playing

Continued on Page 7

Companion course

A-Ga-Ming to open a second 18 holes

Continued from Page 6

from tees high atop a wooded ridge that offers wonderful views of Torch Lake," said Brown. "From the tee it drops about 80-some feet onto a large green surrounded by large maples and cedars."

Hole No. 9 may be one of the most interesting. The tee-shot is a forced carry over wetlands through a narrow tree-lined chute to reach the fairway, and it's uphill all the way to the green.

A huge 15-acre practice center will be available

later in the summer. It will feature a driving range, putting green, chipping green and bunkers to practice out of. A new 7,000-square-foot clubhouse is also scheduled to start construction this fall, and they also have approval to build 52 condos around the new course with 10 residential lots located on the north side of the property.

For more information on the scheduled opening of the new Sundance course or to book tee times, call (231) 264-5081 or click on www.a-ga-ming.com.

FREE Northern Michigan Resident VIP Card

Bring card
in - Staff will
laminare for
FREE

2005 VIP Black Bear Discount Rate Card



BLACK BEAR
GOLF CLUB

IN SEASON

June-July-August
Mon-Thurs: \$29.00
Fri-Sun: \$42.00

OFF SEASON

April-May-Sept-Oct
Mon-Thurs: \$22.00
Fri-Sun: \$32.00

Unlimited Use! • Includes Cart!

8 miles N. of Gaylord, off I-75
1500 Alexander • Vanderbilt, MI

866-983-4441

www.golfblackbear.net

Cardholder can bring up to 8 golfers at the same rate. Not valid with any other coupons or promotions. Mention card when making tee-times. Prices valid through Oct. 15, 2005.

4/24/05/861.GF



Emerald Vale Golf Club

2 Miles West of Manton on M-42 3½ Miles West of the US-131 Freeway
P.O. Box 250, Manton, MI 49663

800-890-3407 • 231-824-3631 Fax: 231-824-9390

www.emeraldvale.com

Click thru a hole-by-hole tour of Emerald Vale

SPRING GOLF

18 Holes with Cart \$25⁰⁰

Senior 18 Holes with Cart \$21⁰⁰

Expires May 26, 2005

Summer Golf Special

Foursome for \$128⁰⁰

18 Holes with Cart • Coupon Required
Good anytime Monday-Friday - No Weekends

Two For Tuesday Split Regular Green Fee

A \$38⁰⁰ Value for \$26⁰⁰

Good All Season - Must Mention Ad

4-24-794/872.gf

Northern exposure

Shootout gives Gaylord a boost

BY MIKE DUNN

Special to the Record-Eagle

GAYLORD – It was the summer of 1999 when the fleet of trucks loaded with TV cameras and equipment came rolling into Otsego County for the first time.

The trucks had been dispatched by the ESPN cable network. The destination was Treetops Resort in Dover Township, northeast of Gaylord. The purpose was national TV coverage of the first-ever Par-3 Shootout, a two-day novelty event that pitted two of the top members of the PGA Tour and two of the top players of the Seniors Tour (now known as the Champions Tour) on the scenic but challenging Threetops Course at Treetops.

It would be a skins-type format and the hilly par-3 course would be the equalizer, assuring that any of the four golfers could win the most prize money.

The Shootout event was the brainchild of the late Harry Melling, the entrepreneur and visionary who converted Treetops Resort into one of the premier golfing destinations in the country and the man who helped to put the Gaylord Golf Mecca on the map.

Melling, with Treetops Director of Golf and famed swing instructor Rick Smith and Treetops Executive Vice President Jerry Albert, worked behind the scenes for three long years to put all the pieces together. Finally, with the approval of ESPN and the financial backing of corporate sponsor DLJ Direct, and the organizational aid provided by Terry Hanson of Hanson Entertainment based in Charlotte, N.C., all the details were ironed out and the green light was procured.

Sadly, Melling passed away on May 29 of 1999, just two months before his dream became a reality.

The inaugural two-day, 18-hole event was played on the warm Monday and Tuesday afternoons of July 26-27, and the foursome featured was a virtual who's who of the golf world: Lee Janzen, the popular 1997 Players Championship victor, and Phil Mickelson, the second-ranked player in the world, representing the PGA Tour; and the Golden Bear himself, Jack Nicklaus, and Raymond Floyd, one of the top money-earners of all-time, representing the Senior Tour.

Smith, who is now the majority owner of Treetops Resort, was largely responsible for bringing the four big names of golf to Otsego County for the Shootout (as he has been each year



Phil Mickelson watches a tee shot at the Par-3 Shootout.

since).

Janzen led wire-to-wire in the 1999 Shootout, earning \$260,000 of the \$540,000 in total prize money, followed closely by Mickelson (\$230,000). The Seniors Tour duo of Nicklaus (\$40,000) and Floyd (\$10,000) obviously didn't do as well as they hoped, but the irrepressible Floyd would return to Treetops the following year to earn the most prize money and gain some vindication for the elders.

ESPN broadcast the Par-3 Shootout via tape delay each evening that first year, a policy which has worked well and has continued in succeeding years.

The Shootout has gained in popularity and has become a yearly ritual for ESPN and for Treetops, of course, but no one knew if that would be the case when the event was getting under way. There were a lot more questions than answers in 1999. The network invested a lot of time and money into its coverage of the event, as did DLJ Direct and Treetops itself.

Would the investment be worth it? That was the big question prior to the start of it all. Would the Par-3 Shootout capture the imagination of the viewing public?

There was a pretty quick indication that the Shootout had sparked interest when the 1,400 gallery tickets available to the public sold out in a matter of days. Fortunately for everyone involved in planning and organizing the event, that same kind of interest carried over to the general public.

In TV parlance, the Shootout was a hit. This

Continued on Page 14



Golf Michigan Playbook



2005 Golf Book
2-FOR-1's + DISCOUNTS
463 Courses — Value Over \$13,000

Golf Michigan Playbook is the fastest growing golf book in the state among golf course owners.

Special Price only \$13.95 (Reg. Price \$16.95)

2 books-\$13.00 ea. 3 books-\$12.00 ea. 4 books-\$11.00 ea.
5-9 books-\$10.00 ea. 10 or more \$9.00 ea. Buy 10 and 11th is FREE

ALL SIX AREAS ARE IN ONE BOOK

G.R., Mus., Holland 67 Courses, 226 Rounds	Alpine, Boulder Creek, Broadmoor, Briarwood, Cedar Chase, Chase Hammond, Grand Haven, GlenKerry, Maple Hill, Meadows, Thoroughbred, Wallinwood, The Links at Bowen Lake, Gracewil, Colonial, Deer Run, Grand Island, Candlestone, Thornapple Pointe, Iron Horse, Oasis, West Ottawa, Pigeon Creek, Indian Trails, Terra Verde
Kal. Benton Harbor 64 Courses, 251 Rounds	Hampshire, Indian Lake Hills, Lake Doster, Lake Mich. Hills, Spruce Ridge, Thornapple, Yankee Springs, Orchard Hills, Milham Park, The Lynx, Prarieowood, Binder Park, Diamond Springs, Hidden Valley, Hilltop Golf Center, Blackberry Patch, Heritage Glen, Riverbend, Clearbrook, Hastings, Marywood, Hawks Head
Central Michigan 27 Courses, 86 Rounds	The Emerald, Falcon Head, The Pines, Pohlcot, Riverwood, St. Ives, Twin Bridges, Winding Brook, Hidden Oaks, Buck's Run, Tullymore, Birch Valley, Whiteoaks
Lansing, Jackson 48 Courses, 128 Rounds	Burr Oak, Gratiot CC, El Dorado, Hickory Hills, Royal Scot, Shadow Ridge, Willow Wood, Oak Lane, Waterloo, Meridian Sun, Wheatfield Valley, Clark Lake, Portland CC, Prairie Creek, Cascades, Whiteoaks
South-East Areas 143 Courses, 404 Rounds	Brookwood, Lakeview Hills, Reddeman Farms, Rush Lake, Sugar-bush, The Timbers, Whispering Pines, Rattle Run, Bedford Hills Black River, Captain's Club, Huron Shores, Carrington, Copper Ridge, Faulkwood Shores, Raisin Valley, Salt River, Whitmore Lake, Glacier Club, Lake Forest, St. Johns, Oxford Hills, Maple Leaf, Romeo, Bruce Hills, Maple Lane, Pine River, River Bank, Whitford Valley, Wolcott Mill

Northern Area = 118 Courses, 259 Rounds

A-Ga-Ming GC Antrim Dells GC Apple Valley GC Bay Meadows GC Bear Lake Co. Highlands GC The Bellaire GC Birch Pointe CC Black Bear GC Boulder Creek GC Boyer Rapids Golf The Briar at Mesick Golf & CC Burning Oak CC Caberfae Peaks Ski & Golf Resort Cadillac CC Cedar Hills GC Cedar Valley GC Centennial Farm GC Champion Hill Cheboygan Golf & CC Chestnut Hills GC Chestnut Valley The Chief Choccolay Downs GC Country Greens GPC The Crown GC Crystal Lake GC	Crystal Mtn. Resort Mtn. GC Crystal Mtn. Resort Betsie CC Crystal View Dunes GC Eagle Beach GC Eagle Glen GC Edgewood Green GC Eldorado Elk Rapids Elmbrook GC Emerald Vale GC Firefly Golf Links Fox Run CC Frankfort GC Gladwin Heights GC Greenview GC Grayling CC Greenbush GC The Heathlands Hemlock GC Highland GC High Pointe Huron Breeze Golf & CC Indian Lake Golf & CC Indian River GC Interlochen GC	Knoll View GC Lac Vieux Resort The Lake Lakeside GC Lakeside Links GC Lakes of the North GC Lakewood Shores Resort Leelanau Club at Batlle Farm Little Bear GC The Loon The Mackinaw Club Malard GC & DR Manistee Golf & CC Manistee National Resort Canthooke Manistee National Resort Cutter's Ridge Marquette Trails GC Marsh Ridge Resort McGuire's Resort Michaywe Pines GC Missaukee GC Mistwood GC Mitchell Creek GC Munoscog GC The Natural	The Oaks at Kinchelo Otsego Club - The Classic Pictured Rocks Golf & CC Pinecroft Golf Plantation Pine View Highlands GC Portage Lake The Quest GC Red Fox Run Red Hawk GC Rife River GC Rippling Rapids GC The Rose GC Sault Ste. Marie CC Scotland's Yard Scantley Creek Summit Shanty Creek Resort Schuss Mtn. Singing Bridge GC Snow Snake Ski & Golf Springbrook GC Springport Hills GC Stoney Links GC Stony Point GC Sugar Springs GC The Tamaracks CC Tamaracks West Par 3 GC	Tanglewood Marsh GC Tawas Creek GC Tustin Trails GC Twin Birch GC Wawashkamo GC Wedgewood GC West Branch CC White Deer CC White Pine National Wicker Hills GC Wilderness Valley- Black Forest Wilderness Valley-Valley GC Wilderness GC Wildwood Lakes GC Ye Nynne Old Hollis GC Ye Olde CC
---	---	--	--	---

Mail to: GOLF MICHIGAN PLAYBOOK

P.O. Box 150128

Grand Rapids, Michigan 49515

Check MasterCard Visa Card No. _____

NAME: _____ Exp. Date _____

ADDRESS _____ To Phone Order Call: **1-800-643-4445**

1 Book \$13.95 each **5-9 Books \$10.00 each**
2 Books \$13.00 each **Buy 10 or more books \$9.00 each \$ _____**
3 Books \$12.00 each **Buy 10 & 11th Postage/Handling \$2.95**
4 Books \$11.00 each **is FREE!** **Total \$ _____**

30 Day Money Back Guarantee Same Day Service by Return Mail

COMPARE QUALITY, QUANTITY & PRICE.
THERE IS A DIFFERENCE IN BOOKS.

These prices valid thru 6-6-05 After This Date \$3.00 more each book

Wee-bit of the Emerald Isle

True North another Engh winner



True North in Harbor Springs

BY MIKE TERRELL
Special to the Record-Eagle

HARBOR SPRINGS — With his newest course, True North Golf Club, set to open early next month near Harbor Springs, renowned golf architect Jim Engh is on a role.

In addition to having The Club at Black Rock in Coeur d'Alene, Idaho, being named the "Best New Private" golf course in America for 2003, Engh was also recently named as *Golf Digest's* first-ever "Architect of the Year."

That same publication ranked Tullymore Golf Club, his first Michigan masterpiece located near Stanwood, as "America's Best New Public Upscale Golf Club" the year previous.

True North is another Engh winner. The antithesis of Tullymore, his other Michigan course which was carved out of wetlands and scrub pine forests, True North is sculpted out of the rolling Glacially carved hill and lake country of northern Michigan. The two courses, one already an award-winning design and the other destined to be, truly shows off his versatility and ability to work with totally different landscapes and topography.

"Jim continues to demonstrate why we selected him to design True North," said Brad McGinnis, co-founder of True North, a golf and real estate community. "And from the outset, he's told us he thinks our project has every chance of being recognized as perhaps the finest course he's done to date."

Engh, a devotee of Irish golf, sprinkled a wee-bit of the Emerald Isle around True North in the

design and use of wild native grass along the rough and between holes and in between fair and fairway.

"This golf course is a complete change from Tullymore," said the golf course architect. "From the wetlands of that design to the rolling terrain and valleys of True North the topography and sandy soils are reminiscent of the sites where golf was first played. Add to that the dense northern Michigan forests and we had an opportunity to create something spectacular here."

The unique par-72 layout will measure a little over 7,000 yards from the tips down to 4,808 yards from the forward tees. With four sets of tees to choose from, players will be able to find a comfortable playing yardage to fit their game. This unique 18-hole layout also features five par-fives and five par-threes.

More than half-dozen ponds scattered around the links will mirror the essence of nearby Lake Michigan, and dramatic bunkering will both help outline the course and collect errant shots. Towering pines and hardwoods line many of the fairways and help define the generous landing areas Engh has built into the design of most holes.

True North is slated to become a private, gated community and will be open to the public for only a limited time.

"That is the plan," said GM and director of golf Dave Mocini. "Eventually it will become a private golf club, but we don't have a timetable set in

Continued on Page 11

Wee-bit

Continued from Page 10

stone. Initially at least there will be ample opportunity for the public to sample the new layout."

Nestled in the woods surrounding the golf course, True North's gated community includes 72 home sites spread around the 320-acre development and a 6,000-square-foot clubhouse, which, when completed in 2005, will overlook the 18th green. Located on the highest point of the property, it will offer breathtaking views of the surrounding countryside.

As testament to the developments green nature and commitment to environmentally responsible growth, it has been accepted into Audubon International's prestigious Silver Signature Program.

For more information on True North, the course and its proposed membership program, call (800) TRUENORTH or click on www.truenorthgolf.com.

The course is slated to open for the season the first weekend of May, but with the great start to spring that northern Michigan has experienced, they may open sooner, according to Mocini.

Comeback

Upgrades at Black Forest

GAYLORD — Golfweek magazine has selected the Black Forest course at Wilderness Valley among the Top 15 courses in Michigan.

Located just outside the Alpine village of Gaylord, Black Forest was listed No. 6 on the Golfweek list.

In recent years the course had fallen off from its earlier days when Golfweek had it ranked among its "Top 100 Modern Classics." When it opened in 1993, Golf Digest ranked it among the Top 10 new resort courses in America, and Golf Magazine named it one of the top four new public courses in the U.S.

Osprey Recreational Properties, which also owns Manistee National in Manistee, purchased Black Forest over a year ago with the intention of returning it to prominence. Over the past year Osprey has made several improvements including upgrading maintenance and better defining the bunkers, which are visually intimidating and hallmarks of the course.

Black Forest was designed by Tom Doak, who has gained fame in recent years for such courses as Pacific Dunes in Oregon, and the recent duo of Cape Kidnappers and Barnboughe Dunes in New Zealand and Australia. Black Forest was Doak's third design, which utilized much of the knowledge he gained from studying over 1,000 of the world's greatest classical courses.

UNFORGETTABLE TERRAIN
AND PURE NORTHERN
MICHIGAN BEAUTY.

Leelanau County's
Newest Golf Addition



\$5 OFF

18-HOLES
WITH CART

NOT VALID FOR
LEAGUES OR OUTINGS

Expires May 26, 2005

— 18 Championship Holes —
Par 71

Full Service Pro Shop
& Clubhouse

LOCATED 9 MILES FROM
TRAVERSE CITY OFF M-22
IN SUTTONS BAY

FOR TEE-TIMES CALL
231-271-2020

www.leelanaclub.com

Mistwood expanding

Lodging, Par-3 course added



Mistwood is adding a second course called the Little Nine.

BY MIKE TERRELL

Special to the Record-Eagle

LAKE ANN – While it may not be on the order of a new 18-hole golf course, Mistwood, located near Lake Ann, is also quietly making some great strides in becoming a complete resort.

New this season are the two first buildings in a planned development consisting of 24 two-bedroom, two-bath Villas, which will be packaged for “stay and play plans,” according to owner Sherm Baarstad.

The new development will also eventually include eight two-bedroom, two-bath Cottages, 18 more single-family home sites and a brand new Par-3 golf course. Called the Little Nine, the course is currently under construction with a planned opening in August. The Villas and some of the home sites front the Little Nine.

“We’ve waited a long time to accomplish this, but we’re now becoming a complete resort,” said Baarstad, who first opened the golf course in 1993. “We’ve always had great golf courses and all the other amenities, including a nice club house with a pro-shop, lounge and restaurant, but we always lacked the lodging. And, there isn’t much of a choice in our immediate area.”

The two-bedroom Villas are about 1,340-square-feet and will accommodate up to six golfers. Completely furnished, they are listed at \$199,000 and being sold through the golf course.

The 1,500-square-foot Cottages are like condos with an association taking care of the grounds and exterior of the building. Options are available for the individual units to have a basement and a loft

for more space. They start at \$249,900.

The Little Nine Par-3 golf course will have holes ranging from 60 to 125 yards, according to Baarstad.

“It will be a fun course to play, something that the whole family can enjoy,” he said. “It will also be a great place to learn the game without feeling intimidated on a regular course.”

Although a fee for the Little Nine had not yet been established, Baarstad indicated that a parent and a couple of kids will be able to play for about \$15 or maybe less.

“We want to make it affordable so it gets lots of use,” he added, “from both house guests and playing guests.”

Mistwood went through a few financial pains in the late 1990s, but that is all behind them now, according to Baarstad.

“We’ve reorganized with fewer partners and the future looks bright for us, especially with the new housing development and now being able to offer stay and play packages,” he said. “It’s an exciting time for Mistwood.”

Mistwood has 27 holes laid out in three distinctive nine-hole groupings. The complex includes a practice range with target greens, sand bunkers and three putting greens. The club house includes a pro-shop, the Sunset Bar and Grill, which is open for dinners as well as the golfing public, and Bogey’s Snack Bar. *Golf Digest* has repeatedly rated Mistwood as four-star golf value.

For more information on Mistwood, the new development or to book a tee time, call (231) 275-5500 or log onto www.mistwoodgolf.com.

Open titles on line

Continued from Page 5

"Sometimes you need an extra pair of eyes, and that's what he was."

Snider and Malinaric both finished the three-round tournament at 6-under 210. Two-time Open champion Elaine Crosby was one stroke back at 5-under 211.

Malinaric, who led after two rounds on the Mountain Ridge course, never trailed until losing the playoff hole.

She lowered her tournament score to 9-under after back-to-back birdies on 10 and 11, but she doubled the 13th and 17th – sandwiched around a birdie putt on No. 15 – to open the door for Snider and Crosby.

Crosby could have made the playoff a three-some, but she lipped a 2-foot par putt on No. 17, then missed a 17-foot birdie attempt on 18 by six inches.

Snider nearly played her way out of it by three-putting for bogeys on the 16th and 17th, but she stepped to the 18th tee still only one shot back. She just didn't realize it at the time.

"Eric (Olson, her caddy) told me I was only one down, and I said, 'No, I'm not,'" Snider said.

Given new life heading into the par-5 final hole, Snider left herself with an 8-foot putt for birdie. Relying on Dean's advice, she calmly rolled in the putt and headed to a playoff on the same hole.

For possibly the first time all day, Malinaric was longer off the tee than Snider, but the perfect drive also proved to be her undoing. With only 205 yards left to the tee, she decided to go for the green in two, but she ripped a 4-iron left into a deep hole, well into the trees and nearly out-of-bounds.

"It was a bad idea," said Malinaric, a 37-year-old mini-tour player from Rancho Mirage, Calif. "My drive was in the perfect spot. It was just what I was looking for.

"I wanted to keep (my second shot) on the left side," she said. "I caught it on the toe and hooked it. It wasn't pretty."

How deep was the hole?

"If I jumped I could see the top of the flag," Malinaric said.

Meanwhile, Snider followed her drive with a 7-iron to within 80 yards, then dropped a lob wedge 10 feet from the pin. She dashed Malinaric's hopes by sinking her putt for birdie.

"I haven't won this event before, but I just felt I had a chance to win," said Snider, the 2000 Michigan Amateur champion who also became the first woman to win the Tournament of Champions, in 2003. "I've been hitting the ball well all summer and I've made some changes in my putting. I knew it would all come together sooner or later."

Traverse City's

Family Golf Facility



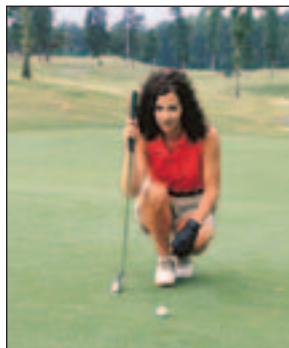
Lee Houtteman Learning Center

*Par 32 9 Hole Course
and Par 3 Course
Memberships & Leagues
Available
Practice and Learning
Facility*

- Target Greens
- Short Game Practice Area
- Indoor Instruction Facility
- Video Analysis

**Clinics and Lessons for
All Abilities and Ages**

- Learn to Golf Classes
 - Women Only
- Couples • Parent/Child
 - Private Lessons
- Free Video Analysis Demo



**Titleist / FootJoy
Junior Weekly Lesson and
Play Program
YMCA Junior Programs**

**Lee Houtteman, PGA
Jeff Dean, PGA
Logan Price, PGA**

For tee times, lessons and clinics
• **CALL 231-946-7927** •

5550 Bay Meadows Drive • Traverse City

just 2 miles from downtown Traverse City

Northern exposure

Shootout gives Gaylord a boost

Continued from Page 8

June marks the seventh straight year that ESPN will broadcast the Par-3 Shootout. The dates have been changed from late July to late June and the corporate sponsor has changed a few times. In 2005, the primary sponsor is ING.

But the changes have been relatively few. When defending champion Fred Couples puts the crystal trophy on the line against perennial Shootout contender Mickelson and Champions Tour representatives Gary McCord and Andy North on June 27-28, the format and the formula will be basically the same as it was from the start. Why fight success?

Since 1999, Treetops Resort and the Gaylord Golf Mecca of Otsego County have received national exposure through the annual broadcasting of the event.

In 2001, when Lee Trevino made his famous \$1 million hole-in-one on the 14th hole of the competition, possibly the richest single golf shot ever made, the public exposure increased exponentially.

When the legendary Arnold Palmer came to

Treetops the year after, the exposure grew even more.

From the beginning, Melling's goal was for the TV broadcast to benefit not just Treetops, but golfing and tourism in Otsego County and all of northern Michigan.

Just how valuable has that exposure been?

While it's difficult to put a price tag on that kind of publicity, the impact has been phenomenal, according to Paul Beachnau, the executive director of the Gaylord Area Tourism and Convention Bureau.

"The Par-3 Shootout has had a huge impact," Beachnau said. "Because of the Par-3, people instantaneously recognize Gaylord. It has opened a lot of doors."

Each winter, Beachnau travels throughout the Midwest promoting the Gaylord Golf Mecca and the Gaylord area.

"We get a lot of bookings just because of the name recognition," he said. "When we go to the golf shows, a lot of people know who we are right away because of the Shootout. It's so great to go to these places and have people come up

Continued to Page 15

PING - TITLEIST - TAYLOR MADE - CALLAWAY - CLEVELAND

TRAVERSE CITY GOLF CENTER

6450 Secor Rd., Traverse City, MI 49684 (231) 947-1185

- Owned and Operated by PGA Golf Professionals
 - Newly Remodeled 3000 sq. ft. Pro Shop
 - Area's Best Selection and Best Prices
 - 35 Station Outdoor Driving Range
 - Professional Golf Club Repair
 - Indoor Driving Range
 - PGA Golf Instruction
 - 2 Golf Simulators
 - Custom Fitting

Try Before
You Buy

Try Before
You Buy



Todd Brown PGA



Doug Lichty PGA

4-24.gf.794851

AFFINITY - SPALDING - FOOT JOY - ETONIC - GRAFALLOY

ORLIMAR - POWERBUILT - COBRA - CALLAWAY

GOLF PRIDE - HARRISON - WINN - CALLAWAY

Northern exposure

Shootout gives Gaylord a boost

Continued from Page 14

and tell us they've seen the area spotlighted on TV and they want to visit and play some golf."

When visitors come to Otsego County, it isn't just the golf courses that benefit, Beachnau pointed out. The area restaurants, gas stations, hotels and other local businesses also gain.

"Having the Shootout on TV is a great plus for the whole area," says Judy Mason, director of golf at nearby Michaywé. "It isn't just about Treetops; it helps all of us. People come here from out of town to play golf and they spend their money here. Everybody benefits from it. It's a boost for Gaylord and for the whole Golf Mecca."

Jeff Luczak, the assistant pro at the Black Forest and the Wilderness Valley courses that are part of the Golf Mecca, can't say for sure how many people have played those courses as a direct result of the Shootout, but he knows there is a positive impact.

"It's something that builds every year," Luczak said. "The TV exposure is great because it generates interest and gets people coming to the area. When they come, they're looking to play golf and there's a lot of great courses around here to play.

There's a ripple effect."

Mark Hogan, the head golf pro at Otsego Club, has been a professional in the Gaylord area since 1986. He is among a number of area pros who have witnessed first hand the impact that the Shootout has had.

"There's probably more of a benefit to the area as a whole than to the individual golf courses," Hogan said. "People see the Shootout on TV and make plans to come and visit. They might end up playing golf at Treetops or at some other resort while they're here, but they give a boost to the whole economy. The TV exposure is a good thing for sure."

For his part, the current Treetops Resort Director of Golf Scott Head is happy to keep the tradition going.

"All of us here at Treetops are aware that this was Harry's dream and it's gratifying to be part of making that dream come true," Head said. "It's always a thrill to have some of the biggest names in golf come here every year. The fact that it can be on national TV and bring that kind of exposure to the Gaylord area is a huge plus for everybody."

Traverse City's Premier Championship 18 Hole Course

- A par 72 course with wider fairways and larger-than-average greens
- A moderately priced full-service course just minutes from Traverse City
- A complete pro shop, golf carts, large practice green
- PGA golf instruction available
- Driving Range



2430 West Crown Drive
Traverse City
Tee Times
946-2975



MULLIGAN'S
PUB & GRILLE
OPENING SOON!

MICHIGAN PGA

2005 Northern Michigan Schedule

June 6-7: State Pro-Am, Boyne Highlands
 June 27-30: Michigan Open, Grand Traverse Resort
 July 11-12: Shanty Creek PGA Classic, Shanty Creek
 July 18-20: T of C, Boyne Mountain
 July 25-27: Women's Open, Crystal Mountain Resort
 Aug. 1-2: PGA Senior Championship, The Loon
 Aug. 15-16: Pro Assistants Championship, Treetops Resort
 Aug. 22-24: PGA Championship, Shanty Creek
 Sept. 6: Buick Scramble Sectional, Manistee National

GOLF ASSOCIATION OF MICHIGAN

2005 Northern Michigan Schedule

May 31: Michigan Amateur qualifier, Boyne Highlands
 Aug. 29-20: Women's Championship, Michaywe
 Sept. 1-2: Men's Mid-Am, Boyne Highlands
 Sept. 6: Net Team Championship, Forest Dunes

TRAVERSE GOLF ASSOCIATION

2005 Schedule

May 1: Belvedere
 May 22: Leelanau Club
 June 5: A-Ga-Ming
 June 26: Pinecroft
 July 10: Emerald Vale
 July 24: Grand Traverse Resort, The Bear
 Aug. 14: Twin Birch
 Aug. 28: Grand Traverse Resort, Wolverine
 Sept. 24-25: Championships, Grand Traverse Resort, Spruce Run and Wolverine

The Traverse Golf Association welcomes males and females. There are two play dates per month and they are formatted into individual tournaments with various flights based on handicaps. Players who join without documented handicaps may establish theirs during play dates. Prizes are awarded for each tournament. For membership information call Terri at 231-264-5372.

TC JUNIOR GOLF ASSOCIATION

2005 Tournament Schedules

Division III Juniors

June 21: Interlochen Golf Club
 June 29: Bay Meadows Golf Course

July 7: Elmbrook Golf Course
 July 14: Twin Birch Golf Course
 July 21: Elmbrook Golf Course
 July 27: Bay Meadows Golf Course
 Aug. 2: The Dunes Golf Club
 Aug. 8: Championships, Grand Traverse Resort, Spruce Run
 Division I (9-hole, ages 10-under); Division II (9 holes, ages 12-under)

Division III-Juniors

June 21: Interlochen Golf Club
 June 28: Crystal Mountain Resort, Betsie Valley
 July 7: Elmbrook Golf Course
 July 14: Grandview Golf Club
 July 18: High Pointe Golf Club
 July 21: The Crown Golf Club
 Aug. 2: The Dunes Golf Club
 Aug. 8: Championship, Grand Traverse Resort, Wolverine
 Division III (9 holes, ages 16-under)

Tour Division

June 17: Grand Traverse Resort, Wolverine
 June 23: Pinecroft
 June 28: Crystal Mountain Resort, Betsie Valley
 July 8: Traverse City Country Club
 July 14: Grandview Golf Club
 July 18: High Pointe Golf Club
 July 27: Sleeping Bear Golf Club
 July 28: The Crown Golf Club
 Aug. 3: Mistwood Golf Course
 Aug. 9: Championship, Grand Traverse Resort, Spruce Run

Tour Division (18 holes, ages 18-under)

Northern Michigan Junior Tour/College

June 17: Grand Traverse Resort, Wolverine
 June 23: Pinecroft
 June 30: Leelanau Club at Bahle Farms
 July 8: Traverse City Country Club
 July 13: Schuss Mountain
 July 18: Kingsley Club
 July 21: King's Challenge
 July 27: Sleeping Bear Golf Club
 Aug. 3: Mistwood Golf Course
 Aug. 7-8: Championships, Grand Traverse Resort, Wolverine and The Bear.

Junior Tour is highly competitive 18-hole division for elite golfers within the TCJGA.

There will be a Little Junior Tournament program at Bay Meadows during the summer. There will also be an Instructional Division – open to players ages 7-14– who are not ready for 9-hole competition. That also will be at Bay Meadows. Lesson programs are also available.

The TCJGA is in its 22nd year. It has offered instruction and competitive programs to thousands of players over the years. The association's goal is to help young players develop their games and learn golf etiquette.

To register for lessons and/or tournament competition go to the Web site at www.tcjga.com or call 231-935-GOLF.

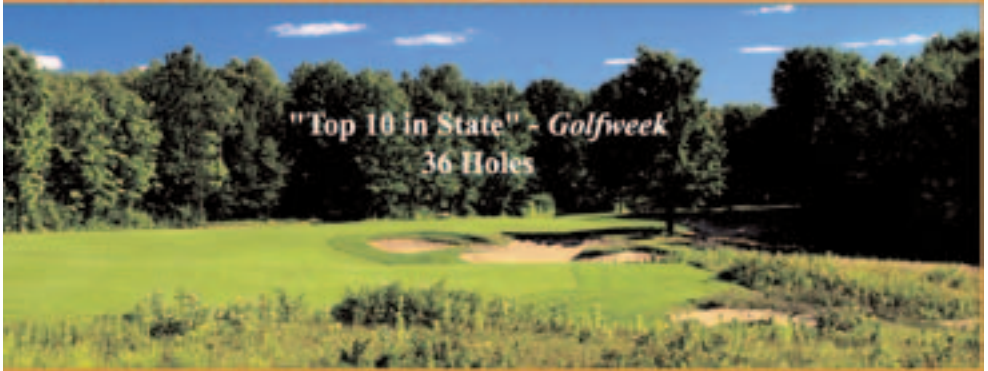


Black Forest

at Wilderness Valley

7519 Mancelona Road • Gaylord, MI
877-271-4755 • www.blackforestgolf.com

GREAT GOLF
is just a short
ride away...

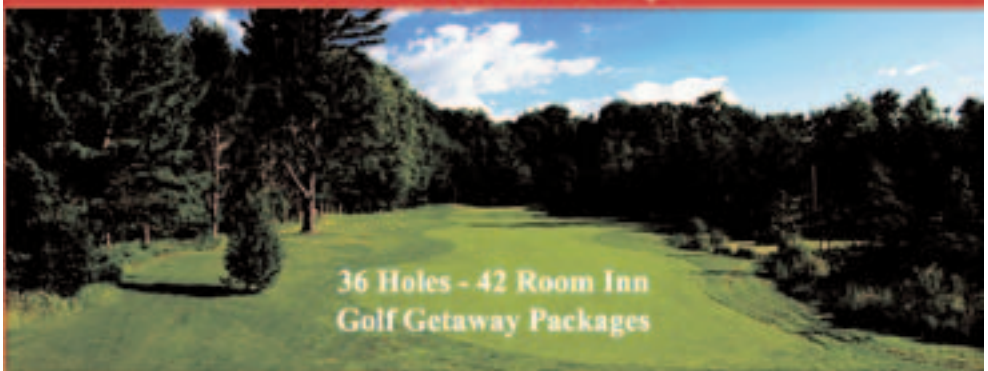


"Top 10 in State" - *Golfweek*
36 Holes

T2 East to 131 North to Mancelona Rd, East to Entrance



South on 31 All the Way



36 Holes - 42 Room Inn
Golf Getaway Packages



Osprey Recreational Properties
Setting the Standard.



MANISTEE NATIONAL
GOLF & RESORT

4797 U.S. 32 South • Manistee, MI
877-271-4731 • www.manisteenational.com

Eye on the sky

Continued from page 4

Elmbrook, is recovering from the recent vandalism that destroyed one of its greens when someone drove over it ripping out pieces of sod and turf.

"It was a real downer, but we're bouncing back," said head pro Roger Putman. "We're Traverse City's oldest course and still a favorite place for locals to play."

Elmbrook will be conducting the third annual Haig Hickory Shaft Tournament in mid-June, which benefits the Heritage Center in Traverse City. The tournament is played in knickers with hickory shafted clubs — a salute to the great Walter Hagen, who spent the last few years of his life living in the area. For more information on the tournament, to book a tee time or check the daily rate, which Elmbrook doesn't like to publicize, call (231) 946-9180.

~ At Crystal Mountain, the makeover of the resort's old Betsie Valley course is nearly complete. They have spent nearly \$1 million on the renovation thus far with a complete makeover of the back nine. The front nine is also slated for some work, but not nearly to the extent that the back nine was renovated. The full 18 is open and yields a new and improved golf experience.

Junior and beginner golfers now have their own set of tees on the Betsie Valley course. A "green" set of tees is nestled well down the fairway from other tee boxes. Score cards are set to accommodate the forward tees with their own line, actual yardage and par so players using these tees can track their progress.

"It allows juniors and beginners a chance to play a 'real' game, but avoid the frustration of having to play from the established tees, yardages and pars," said O'Neill. "It makes the game much more playable and enjoyable for them, and they can move back to the regular tees when they feel comfortable doing so."

You can play the Betsie Valley Course through May 5 for \$33 midweek and \$35 on the weekend, which includes a cart for the 18 holes. For tee times, call (800) 968-7686. The Mountain Ridge Course is \$50 midweek through the same time period.

~ In Leelanau County you can play the Arnold Palmer King's Challenge course through April for \$35 midweek. Its sister course, Sleeping Bear, is available for \$25, seven days a week, through the same time period. The price, of course, includes a cart for the 18-holes.

King's Challenge is also bringing back its famous Steak 'n Play pairing, which has been written about in *Golf Magazine*. The cost is only \$42 midweek — Sunday afternoon through Thursday — and that's

good for 18-holes with a cart and a steak dinner afterwards in the club house. For tee times and a dinner reservation, call (231) 228-7400.

~ Get a foursome together and head up to the Leelanau Club at Bahle Farms, which is located in the highlands above Suttons Bay. Midweek through April 30 it's just \$99 for four people to play 18 holes of golf with carts. Call (231) 271-2020 for a tee time.

~ The Crown, which is looking forward to the opening of its new Mulligan's Pub and Grill on Memorial Day weekend, is off to a great start this season, according to Taberski.

"Business has been good since opening day with spring rates now in effect through the rest of the month," he said. "I've already booked more small outings with groups from downstate than previous years."

The new Irish-themed Mulligan's Pub will be open year round for lunch and dinner. It will be managed by Chamberlain's.

~ The Grand Traverse Resort and Spa will once again be hosting the Michigan Open at the end of June on The Bear. Prior to that event they will be hosting a Summer Solstice event called Golf Your Daylights Out on June 21-23 at the resort, according to public relations manager J. Michael Deagostino.

"It is \$95 per day for as many rounds as you can play each day," he explained. "You play your first round on the Spruce Run Course and follow up with The Bear and Wolverine. With all the daylight we have that time of year; it's conceivable to play all three."

The Jim McLean Golf School will be returning to the resort for its eighth season. For more information on the school or to book tee times, call (231) 534-6000.

~ The Chief and Hawk's Eye golf courses, located across the road from Shanty Creek in Antrim County, are offering a couple of spring specials, according to head pro Dave Hill.

"Before Memorial Day you can play both courses on the same day for just \$119," he explained, "and, all season long, we have what we're calling Twilight Tuesdays. Twilight rates at both courses will be in effect all day long."

For tee times at The Chief call (231) 533-9000, and for Hawk's Eye call (231) 533-4295.

~ At Shanty Creek, the resort's Bonus Value Season is in effect through May 19. You can play the Legend and Cedar River golf courses for respectively as little as \$70 and \$75 midweek, and the Schuss and Summit courses are \$50 and \$25 for an 18-hole round of golf with cart midweek

Continued on page 19

Eye on the sky

Continued from page 18

during that time frame. Call (800) 678-4111 to book a tee time.

~ For the person who likes to golf around, the Gaylord Golf Mecca is offering what they call the Gaylord Area 2-for-1 Golf Passport. The cost is \$89 for the passport, which is good midweek any-time during the season from Sunday after 3 p.m. through the following Thursday. When you buy one round of golf with cart at full price you get the second round with cart free. The offer is good at 16 of the participating Gaylord Golf Mecca courses.

It isn't good at all of the courses at Treetops or Garland. Only one course from each property, the Tradition at Treetops and Reflections at Garland are available to play with the Golf Passport. Only

1,000 passports have been printed,, according to Mecca executive director Paul Beachnau. Call (800) 345-8621 for all the details or to place an order.

~ Boyne USA is offering a couple of good twilight deals for areas golfers that are available all season long at several of their courses, according to spokesperson Julie Ard.

Bay Harbor Golf Club's 9-hole Preserve course is just \$29 to \$39 – depending on time of the season – all season long after 5 p.m. The cost includes a cart. Discounted 18-hole greens fees – mid-day rate – start at 11 a.m. on Boyne Mountain's Monument, the Highland's Moor course and Crooked Tree Golf Club courses. Twilight rates are offered starting at 2 p.m. for several of their courses. For tee times or questions on the offers, call (800) GOBOYNE.



Spring Special

2 players only \$45

(18 holes w/cart)

Valid through May 26 • Must present coupon

Call for tee times

800-851-4653 • 231-585-6800

Pine View Dr. off C-38 (Mancelona Rd.)

8 miles West of Old 27 S.

8 miles East of U.S. 131

4/24.794864.GF

Rated Four Stars by
Golf Digest
Places To Play

Mistwood
GOLF COURSE

\$5.00 Off

Green Fees

Good for 9 or 18 Holes

Not valid with other offers.

Expires 5-26-2005

2 for 1

Green Fees

By one round and get one FREE

Cart required. Valid Sun. thru Thurs.

Not valid with other offers.

Expires 5-26-2005

7568 Ole White Dr. • Lake Ann • 231-275-5500

www.mistwoodgolf.com

4-24.794837.gf

Golf Listings

With more than 100 courses woven into its tapestry, northwestern Lower Michigan is a golfer's paradise. Choose your favorite links below and tee off:

ANTRIM COUNTY

A-Ga-Ming: Overlooking Torch Lake, this is one of the most picturesque courses in the state. Located 10 miles north of Elk Rapids off U.S. 31 North. 264-5081. A-Ga-Ming is adding a second 18-hole course, Sundance, this summer. The new course, designed by Jerry Matthews, is expected to open in early June. Built on rolling bluffs, Sundance offers spectacular views of Torch Lake and Grand Traverse Bay. It will play between 5,000-7,000 yards.

Antrim Dells: This 18-hole championship course was designed by Jerry Matthews. Plays to 6,670 yards from championship tees. Located 35 miles N of Traverse City on U.S. 31. 599-2679.

Bellaire Golf Club: This 18-hole course has been face-lifted over the last few years. It's slightly rolling with a new back nine. Located 2 miles south of Bellaire on M-88. 533-8942.

Elk Rapids Golf Club: The course offers a view of Elk Lake and some of the holes have been re-designed over the past few years. 264-8891.

Centennial Farm Golf Club: The front nine features rolling hills and the back nine plays through hardwoods. It is located near Bellaire and close to several other Antrim County courses. 533-6886.

Hawk's Eye: Designed by John Robinson, the architect on the companion course, The Chief. This player-friendly course has earned rave reviews for its imaginative layout that utilizes the hilly terrain around Lake Bellaire. 533-4295.

Lakes of the North: An 18-hole layout with a 71 par. From championship tees, the course plays to 6,922 yards. Located on County Road 38, 10 miles W of Old 27. 585-6800.

Schuss Mountain Golf Club: The 18-hole course, cut out of Antrim County forest, has sand traps and five water hazards to add to the difficulty. The course has a driving range available. Four miles W of Mancelona on M-88. 800-678-4111.



Schuss Mountain

Cedar River Golf Club: The new Tom Weiskopf designed course opened a few years ago at Shanty Creek to rave reviews. The course plays to 6,989 yards from the back tees and 6,528 from the blue, 5,963 from the white and 5,315 from the red. 800-678-4111.

Summit Golf Club: This hilly, 18-hole course of 6,559 yards features sand traps on each hole. The greens are lightning fast. Located off M-88 near Bellaire. 800-678-4111.

The Chief Golf Course: Bellaire's newest 18-hole championship course was designed by John Robinson and it plays from 4,708 to 6,541 yards. All carts feature GPS. The Chief is located on Shanty Creek Road, 200 feet east of the entrance to Shanty Creek. 888-483-5465.

The Legend Golf Club: Designed by Arnold Palmer and plays to 6,764 yards, the combination of heavily-treed fairways, sand traps and water hazards create difficult shots on a tight course. Three ponds are formed by the headwaters of Shanty Creek, which winds through numerous other holes. 800-678-4111.

Windmill Farms: One of two par-3 courses in the area, Windmill Farms of Mancelona not only offers nine holes of golf, but a fine restaurant as well. 587-5258.

BENZIE COUNTY

Champion Hill: Located on 350 acres of the highest land in Benzie County, this course offers scenic, open, rolling and heather-lined fairways, and picturesque views of four lakes. The 18-hole, par-72 course plays to 6,887 yards. Located 2.5 miles south of U.S. 31 on Marshall Road, just west of Honor. 882-9200.



Crystal Mountain

Crystal Downs: This private course is recognized as one of the finest in the United States. Located near Frankfort.

Crystal Lake Golf Club: The 18-hole layout takes

Continued to page 21

Golf Listings

Continued from page 20

golfers through heather, orchards and hardwoods. It overlooks Crystal Lake and features a practice facility. Located one-half mile north of Beulah on U.S. 31. 882-4061.

Crystal Mountain: The year-round resort on M-115 near Thompsonville offers 36 championship holes cut out of Benzie County woods. Crystal features the Mountain Ridge course and the Betsie Valley course. Driving range available. 378-2911.

Frankfort Golf Club: The nine-hole course plays to 2,552 yards with a par of 34. Located two miles north of Frankfort on M-22. 352-4101.

Mistwood Golf Course: The 27-hole championship course features a multiple tee set-up. Located at 7568 Sweet Lake Rd. in Lake Ann, 13 miles west of Traverse City. A separate Par-3 course, called Little Nine, is expected to open in August. 275-5500.

Pinecroft Golf Plantation: This 18-hole championship course was awarded a 3.5 star rating by Golf Digest's 1998-99 Places To Play. Located one-half mile east of Beulah off U.S. 31 on Narrow Gauge Road. 882-9100.

CHARLEVOIX COUNTY

Beaver Island Golf Course: This nine-hole course plays to 3,260 yards on the island. Par is 35. 448-2301.

Belvedere Golf Club: This challenging course features strategically placed bunkers, slightly rolling fairways and small, well-manicured greens. Located on Marion Center Road, near the M-66 and U.S. 31 junction. 547-2611.

Boyne Mountain Monument: The Monument is famous for its island green on the 18th hole. The course begins at an elevation of 1,100 feet and works its way down through wooded, hilly fairways. 549-6028.

Boyne Mountain Alpine: The Alpine course has water in play on 6 holes. Like the Monument, it starts at an elevation of



Charlevoix Country Club

Continued to page 22



Golf More. Pay Less.

Purchase the
2005 Golf Privilege Card,
and support the work and research of the
American Lung Association of Michigan.

SAVE with free or 2 for 1 Green Fees at over
160 Michigan Golf Courses!

\$30 each or buy 3 get 1 FREE.

Call 1-800-LUNG-USA or visit www.golfmorepayless.com

† AMERICAN LUNG ASSOCIATION®
of Michigan



Here is a sample of
courses offering discounts
in your area:

Antrim Dells Golf Club
Apple Valley Golf Course
Bear Lake County Highlands
Bellaire Golf Club

Black Bear Golf Club
Black Forest Golf Course
The Briar at Mesick
Caberfae Peaks Ski & Golf Resort
Cadillac Country Club
Centennial Farms Golf Club
Cheboygan Golf and Country Club
Cheboygan Golf and Country Club
Chestnut Hills Golf Course
The Crown Golf Club
Crystal Mountain
Dunes Golf Club
Edgewood Greens Golf Course
Eldorado
Elk Rapids Golf Club

Elmbrook Golf Course
Emerald Vale Golf Club
Garland
Grand Traverse Resort and Spa
Grandview Golf Club
Grayling Country Club
The Homestead
Indian River Golf Club
The Leelanau Club at Bahle Farms
Manistee Golf and Country Club
Manistee National Golf and Resort
Maple Ridge Golf Club
McGuire's Resort
Michaywe Pines Golf Club
Mistwood Golf Course

The Natural Golf Course
Otsego Club - The Classic
Red Hawk Golf Club
Roger City Country Club
Scotland's Yard Golf Course
Springbrook Golf Club
Stoney Links Golf Course
Tawas Creek Golf Club
Thunder Bay Resort
The Torch at A-Ga-Ming Golf Resort
Twin Birch Golf Club
White Deer Country Club
Wicker Hills Golf Course
Wilderness Valley
Wildwood Lakes Golf Course

Golf Listings

Continued from page 21

1,100 feet, working down. 549-6028.

Charlevoix Country Club: This 18-hole course was designed by Jerry Matthews. It plays to 6,600 yards from the back tees. 547-1922.

City of Charlevoix Golf Course: This is a unique, nine-hole course that features two trips across U.S. 31 during your round. It's a par 36 that plays to 3,001 yards. 547-3268.

Dunmaglas Golf Course: Designed by Larry Mancour, a member of the Senior PGA Tour, this course offers views of Lakes Charlevoix and Michigan. Six of 18 holes are surrounded by woods. It plays to 6,900 yards from the back tees and is a par 72. 547-1022.

Scotland's Yard Golf: Located one mile east on Springvale Road near Walloon Lake, the nine-hole course plays to 2,555 yards. The course features two large ponds and a 950-foot covered bridge. 535-2848.

Springbrook Golf Course: Located 3.5 miles east of U.S. 131 on Springvale Road, this 18-hole course is a par 72 that plays to 6,260 yards. 441-7529.

Walloon Lake Country Club: This private course offers 18 scenic holes, located on County Line Road.

Ye Nyne Olde Holles Golf Club: This course overlooks Lake Charlevoix. The open, hilly course is well-kept and challenging. Located five miles west of Boyne City on Lakeshore Drive. 582-7609.

CHEBOYGAN COUNTY

Cheboygan Golf & Country Club: This 18-hole course plays to 6,003 yards from back tees. Located one mile northwest of Cheboygan on Old Mackinaw

Road, off U.S. 23. 627-4264.

Indian River Golf Club: This course features rolling, semi-open fairways with large greens, most with sand bunkers. Water on three of 18 holes. 238-7011.

Mullet Lake Golf & Country Club: This is a private, nine-hole course with limited public play. It's an open, slightly rolling course. Fairways and greens are well-maintained. 627-5971.

Wildwood Lakes Golf Course: A popular nine-hole course with tree-lined fairways and small greens. It plays to 2,634 yards. 525-8949.



Black Lake

CRAWFORD COUNTY

Fox Run Country Club:

This course opened in 1990 and is an 18-hole layout on 225 acres of wooded, rolling terrain. It plays to 6,293 yards and is a par 72. It's located south of Grayling, one-half mile west of I-75, exit 251. (989) 348-4343 or 800-4-FOXRUN.

Forest Dunes Golf & Country Club: This is a Tom Weiskopf-designed private course. (989) 275-0700.

Hawk Ridge: This new 18-hole Grayling opened last summer. It was designed by John Robinson, the architect for The Chief and Hawk's Eye in Bellaire. Players will note the elevation changes in the course. There's a differential of 210 feet from

Continued from page 23

*Discover
the Undiscovered!*


**BEAR LAKE
COUNTY HIGHLANDS**

- Seasonal rates available
- Shop the Bear Trap Pro Shop
- 6 play punch cards
- Head Golf Pro Mark Youngdahl
- Golf lessons available
- Twilight rates available starting at 4 p.m. 7 days a week
- Snack Bar

4-24.gt.794870

US 31 South • Bear Lake, MI • 231-864-3817 • www.golfbearlake.com

Golf Listings

Continued from page 22

one end of the course to the other. 989-275-2075.

Grayling Country Club: This 18-hole course plays to 5,707 yards. Located on James Street, just south of the M-72 junction. (989) 348-5618.

EMMET COUNTY

Bay Harbor Golf Club: This course has been compared to Pebble Beach from Nathaniel Crosby himself. It's a great setting, with holes located along the water. 439-4028.

Birchwood Farm Golf & Country Club: A private 18-hole course in Harbor Springs.

Boyne Highlands Heather: The Heather has wooded fairways with sand hazards and water in play on 10 holes. The course plays to 7,218 yards from championship tees and 6,554 from back tees. 526-3029.

Boyne Highlands Moor: The Moor has moderately wide fairways to 7,179 yards from championship tees and 6,521 from back tees. 526-3028.

Boyne Highlands Donald Ross Memorial: The Memorial course has duplicated 18 of designer Donald Ross's most famous holes, including holes from Pinehurst, Scioto, Oakland Hills, Seminole and Inverness. It plays to 6,840 yards from back tees and 6,308 from middle tees. 526-3028.

Boyne Highlands Arthur Hills: Yardages vary from 3,500 on the back tees to 2,640 on the front tees. Each hole has a distinctive design. 526-3028.

Chestnut Valley Golf Club: Senior PGA pro Larry Mancour designed this course. The 18-hole course plays to 6,700 from the championship tees. The course features five par threes and five par fives. 348-0880.

Crooked Tree Golf Club: This 18-hole championship course and residential development is located just west of Petoskey on U.S. 31. The course sits on the bluffs overlooking Little Traverse Bay and offers views of the Bay, Harbor Springs and Lake Michigan. It plays to 6,584 yards and is a par 71. 439-4030.

Harbor Point

Golf Course: This 18-hole course is private until 1:30 p.m. daily. Located on Shore Drive near Harbor Springs. 526-2951.



Hidden River

Hidden River Golf and Casting Club:

This is a new course that combines golf and fly fishing, since the facility is located on the banks of scenic Maple



@ V| ZTaB 9\axfg: b_YCXebW


† Fi a 6SkEZad 9S_ WUZaa^
7 `ak(, * ZagcaxEZad YS_ W` efdUfa`
b'ge'aVY| Yh|WWS S'kele Ugefa_ i WWW
-ff| YS_ V_ adWxh_ a' k' && fz

† Fg`kG` ^L [fW9a^XBSU SYW
: `UgWw` aVY| Y TdS| Xef S' VWWWe YaX
i |fZUSf Xh_ a' k' ++fz

† FafS^9a^XBSU SYW
7 `akfZVWVWfaXZVWf`kG` ^L [fW9aX
BSU SYW`geS` S` VS|kLagba` / XidXaVS` V
TMMWSW`SfS` k4ak` VdW`Sgd` fXh_ ` ##fz

† EgbW8|hW` 9a^X WWe
: `UgWw` ` [Zfe'aVY| Y| V| `WWS` V
TdS| Xefel g` ^L [fWYaX| |fZUSf S' Vgb
fa S' ZagcaxbXW`e|a S'| efdUfa` Xh_
a' k' *# ffl i |fZ| efdUfa` ad`) %ffl
i |fZagf| efdUfa` z

† 4ak` W5ag` fdkEbafe
I WScKZ|YZbWad` S` UWa^XWdXidS^kagd
` WWeZHeff agdefadW`aUSFW|` RShMWS|fk
Sf # # 7z8h` f EfdWWS` VBWae| WkSf #S` "
4Skh|W DaSvz

† 4ak` WWSdVe^{E?} 
4ak` WWSdVe^{E?} S`ai ekagfa Wd` baf` fea`
WWSdZ|` YXh_ YdWw`XWd` |Xf|U|Wd` aVY| Y
S` VdWS|`bgdZSeW`Sf 4ak` WxhbWf`Wz
H`eff i i zTak` WWSdVeZa_ Xid_ adWWS|e`



6T_+###!: B!5BLA8`bei` y'g`
5bl`aXVb` " Zb_Ybe`Wxg|V`

LCecXfbz`NeaZ|gc`h`gW` Wf|LLCaw`TecoXecXfbz`h`gW` Wf|
"EMWX TUXTge|`#e` !

Golf Listings

Continued from page 23

River. 529-4653.

Little Traverse Bay Golf Club: This public course offers great scenery and a fair, playable 18 holes. The layout is located about halfway between Petoskey and Harbor Springs. 526-6200.

Petoskey Bay View Country Club: This outstanding course is private and located on Country Club Drive in Petoskey. 347-3394.

Maple Ridge Golf Club: This course is on U.S. 31 in Brutus, 15 miles north of Petoskey. There are two separate 18-hole courses. The Narrows is a 6,004-yard course and the Executive a 3,100-yard course. Fairways are narrow and water comes into play on six holes. 529-6574.

True North: This new course, designed by Jim Engh, is expected to open in May. It's slated to be a private course, but will be open initially to the public. It will play from 4,808-7,000 yards. 1-800-TRUENORTH.

Wequetonsing Golf Club: This course is private and located on M-119 in Harbor Springs.

Wilderness Golf Course: Located three miles west of U.S. 31 on Gill Road, Wilderness is a nine-hole course that plays to 2,670 yards. 537-4973.

GRAND TRAVERSE COUNTY

Bay Meadows Golf Course: Located just two miles from downtown Traverse City, this course recently expanded to 18 holes — a nine-hole par-three course and a nine-hole family course (par 32). It was developed with the family in mind. There are also putting and chipping greens, plus a range. It's located between M-72 and Barney Rd. 946-7927.

The Crown Golf Club: Located five minutes from the Grand Traverse Mall, the Crown's 18-hole par 72 course measures 6,676 yards. It features wide fairways and larger than average greens. It also has a complete pro shop and range. Mulligan's Pub and Grille is slated to open in the spring. 946-2975.

Elmbrook Golf Course: The oldest 18-hole layout in the county. The sixth hole, a 360-yard par-four, offers a spectacular view of Grand Traverse Bay and downtown Traverse City from an elevated tee. Water is in play on three holes. Practice range for irons available. Located south of Traverse City on Hammond Road. 946-9180.

Grand Traverse Resort, Spruce Run: The challenging 18-hole championship course overlooking Grand Traverse Bay plays to 6,700 yards from championship tees. The links, designed by William Newcomb, served as host of the Michigan Open pro tournament before moving to "The Bear." Water is in play on 11 holes. Sand traps dot every hole. Driving range available. 938-1620.

Grand Traverse Resort, The Bear: Designed by golfing legend Jack Nicklaus, the award-winning championship course poses a stiff challenge for all. The 7,000-yard layout winds through rolling hills and apple and cherry orchards with a view of Grand Traverse Bay. Deep sand traps, thick rough and strategically placed water hazards heighten the degree of difficulty and put a premium on shot accuracy. It is also the host for the Michigan Open. 616-938-1620.

Grand Traverse Resort and Spa, The Wolverine. This Gary Player course opened for play in 1999.

Continued to page 25

THE INTERLOCHEN GOLF CLUB



10586 U.S. 31 South
Interlochen, MI 49643
877-480-7311 • 231-275-7311
Fax 231-275-6401
www.interlochengolf.com

Rated one of America's Top 100 Best Value Courses. The Scenic Interlochen Golf Club is laid out through a forest of large, mixed hardwoods and white pines. It plays to 6445 yards with a slope rating of 130. It's strategically placed bunkers: water hazards add additional challenges for the weekend golfer and low handicap player alike. This course is a shotmakers delight.

Located just 12 miles from Traverse City on US 31 South. Tee Times suggested.

Specializing in your Group Outings

Lunch & Nightly Dinner Specials

4-24.gt.794842

Golf Listings

Continued from page 24



The Bear

Each nine of The Wolverine is distinctive. It plays to 7,000 yards from the back tees and just over 5,000 yards from the most forward tees. 616-938-2100.

High Pointe Golf Club: Designed by renowned architect Tom Doak, the course offers play reminiscent of traditional British courses and natural layout. High Pointe accommodates all levels of golfers and has drawn praise from both Golf Digest and Golf Magazine. It was ranked one of the top 100 courses in the U.S., according to balloting by Golf Magazine's panel of selectors for 1998-99. It's ranked 74th. Located three miles east of Acme, just off M-72. 267-9900.

Interlochen Golf Course: Rated one of America's Top 100 Value Courses by "Maximum Golf" magazine, the scenic Interlochen Golf Course is laid out through a forest of large, mixed hardwoods and white pines. It plays to 6,445 yards, with a slope rating of 130. Its strategically placed bunkers and water hazards add additional challenge for the weekend golfer and the low handicap player alike. Located on U.S. 31 south, 13 miles southwest of Traverse City. 275-7311 or 1-877-480-7311.

Kingsley Club: The Kingsley Club, which opened three years ago, was built on high rolling countryside pastures. The club was committed to preserv-

ing the environment on this private course, designed by Traverse City's Mike DeVries. The par-71 course plays up to 6,911 yards. Membership will be limited to 250. Located 12 miles south of Traverse City. Call 946-5538.

Lochenheath Golf Club: Formerly a cherry orchard, now private course, Lochenheath offers vistas of East Bay on 16 of its 18 holes. Steve Smyers designed a par-71 course for players of all ability to enjoy. The course plays from 7,000 yards to just over 5,000. Located on U.S.-31, just north of Grand Traverse Resort and Spa. Call 938-9800.

KALKASKA COUNTY

Grandview Golf Course: Opened in 1992, the 18-hole course plays to 6,400 yards. It features rolling hills and is located on Hagni Road, off County Road 612, about five miles east of Kalkaska. 258-3244.

Timber Wolf Golf Club: The area's newest championship golf course plays to 6,500 yards. The 18-hole, par 71 course is shaped through rolling terrain and six- to eight-foot pines, offering challenging play with excellent views. Located six miles east of Kalkaska on M-72. 258-5685.

Twin Birch: Twin Birch offers a complete stop for the golfer: A driving range, putting green, complete pro shop, restaurant and an 18-hole course. Located one mile east of Kalkaska on County Road 612. 258-9691.

LEELANAU COUNTY

Dunes Golf Club: The Dunes provides a tough test

Continued to page 26

A FUN AND FRIENDLY COURSE

Featuring

- Complete bar service and deli - GREAT PRICES!
- Well maintained fairways & greens
- Beer specials you can't beat
- A beautiful course & close to everything!
- All foursomes through the summer get a free pizza

*Off Rack Rates: Good anytime 2005 season excluding holidays.

Advance tee times recommended. Must present coupon. Cannot be combined with any other offer.

Call Now For Tee Times (888) 745-1220

**The Briar at Mesick
Golf Club**

5441 W. M-115 at M-37 • Mesick, MI 49668

www.thebriaratmesick.com



Golf Listings

Continued from page 25

for the average golfer. The 18-hole course is carved out of the Leelanau County countryside. The toughest hole is the sixth, a 469-yard par-four. Located 17 miles west of Traverse City on M-72. 326-5390.

King's Challenge Golf Club: King's Challenge Golf Course is located 18 miles northwest of Traverse City. The Arnold Palmer Course features outstanding views of the Leelanau Peninsula. The 6,593-yard course has a par of 70 for men and 71 for women. 228-7400 or (888) 228-0121.

Leelanau Club at Bahle Farms: An 18-hole championship course featuring natural terrain and outstanding views of the Leelanau Peninsula. The yardage is 6,651 from the back tees. Located on

Otto Road, three miles south of Suttons Bay. 271-2020.

Leland Country Club: A private golf club with 18 holes that overlooks Lake Leelanau. Located in Leland.

Northport Point: A nine-hole private course near Northport.

Sleeping Bear Golf Club: Formerly the North Course at the Leelanau Country Club, the course is one of the area's longest at 6,800 yards from the championship tees. Call 228-7400 or (888) 228-0121.

Continued to page 27



Grandview Golf Club

3003 Hagni Road, Kalkaska

★★★★ Rating by Golf Digest's Best Places to Play

20,000 Readers Rated over 3500 courses in North America

- Overall experience
- Value for the money
- Pace of Play for 18 holes
- Condition of Course
- Standard of Service



2005 Rates

Starting May 27, 2005

18 Holes w/cart \$4800

9 Holes w/cart \$31.00

Senior M-Thurs.

18 Holes w/cart \$32.00

9 Holes w/cart \$19.00

Monday - \$27 for 27 Holes

**Tuesday - 2 for 1 Green fees
off prime rate**

Twilight after 2:00pm anyday

18 Holes w/cart \$38.00

9 Holes w/cart \$20.00

Restaurant and Lounge open daily
Monday - Friday 11am - 10pm, Saturday, Sunday 8am-10pm

For Tee Times & Information, check our our website
www.GrandViewGolf.net or Call **231-258-3244**

Golf Listings

Continued from page 26

MANISTEE COUNTY

Arcadia Bluffs: One of the most beautiful courses in northern Michigan, Situated 150 feet above the Lake Michigan shoreline, the 18-hole, par-72 course has no water hazards, making it look like a seaside course. 889-3001.

Bear Lake Golf Association: Even though the course isn't long, it demands precision shots. 864-3817.

Chestnut Hills Golf Course: This nine-hole course was designed by owner Doug Carter. It features festive fairways. 864-2458.

Manistee National Golf & Resort: Formerly Cobi Golf Club, this resort features two 18-hole courses, the original Canthooke Valley and the new Cutters' Ridge, designed by Jerry Matthews. 723-8874.

Fawn Crest Golf Course: Located 18 miles east of Manistee, this heavily wooded nine-hole executive course plays to 2,068 yards. 848-4174.

Fox Hills Golf Course: This nine-hole executive course plays to 2,340 yards. Located four miles south of Manistee. 723-3809.

Manistee Golf & Country Club: A private course with limited public play overlooking Lake Michigan. The greens are small and the course slightly rolling. Plays to 6,031 yards from back tees. Located on Cherry Road in Manistee. 723-2509.

MISSAUKEE COUNTY

Missaukee Golf Club: This 18-hole course was established in 1970 and plays to 6,000 yards from the back tees. It is located at the corner of M-55 and M-66, six miles south of Lake City. 825-2756.

MONTMORENCY COUNTY

Elk Ridge Golf Club: Located five miles north of Atlanta, this 18-hole course plays to 7,058 yards and has drawn rave reviews from *Golf Digest*. 1-800-626-4ELK.

Garland Fountains Course: Many say the best Garland course. Features as much as 90 feet in elevation change and water or fountains on ten holes. (800) 968-0042.

Garland Monarch Course: The Monarch is 7,107 yards from the back tees and the ultimate test for the best of golfers. (800) 968-0042.

Garland Swampfire Course: Somewhat shorter than the Monarch (6,850 yards), the Swampfire features a setting of woods, water and wildlife. (800) 968-0042.

Garland Reflections Course: The Reflections is narrowed down to 6,465 yards and has the unique combination of six each par-fives, par-fours and par threes. 1-800-968-0042.

OTSEGO COUNTY

Gaylord Country Club: This is a semi-open course with gently rolling fairways. Greens are large and most have sand bunkers. Plays to 6,582 yards from back tees. Located 4.5 miles west of Gaylord on M-32. (989) 546-3376.

Black Bear Golf Club: The area's first 19-hole layout. Aware that most golfers arrive with little time to practice, designer Mark Sauger created the par three practice first hole. (877) GOLF-175.

Continued to page 29

Play 9 Holes Sunday Afternoons

OR

2 for 1 Green Fees

(Expires 6/30/05)

only **\$20.⁰⁰**

Grayling Country Club

18 holes, 6,057 yds driving range, putting green, restaurant/lounge on the AuSable River located on I-75 Bus. Loop between the railroad tracks and Big Boy. PUBLIC WELCOME. Reasonable rates.

(989) 348-5618

Get More Golf For Less Green.

FOUR CHAMPIONSHIP COURSES. ONE GREAT RESORT.

Shanty Creek Resort & Club is home to the
Michigan PGA Championship
each August.



ShantyCreek
Resort & Club

NATIONAL RECOGNITION

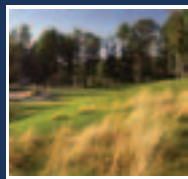
Shanty Creek has been rated a favorite
golf resort by the readers of *Golf Magazine*,
Golf Digest and *Travel + Leisure Magazine*.

\$99 Midweek
Monday - Thursday

18 holes of golf with cart on
The Legend or Cedar River
Golf Clubs • Twilight \$65*



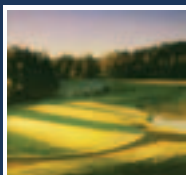
THE LEGEND
Designed by Arnold Palmer



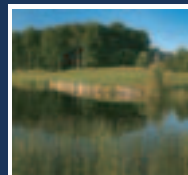
CEDAR RIVER
Designed by Tom Weiskopf

\$69 Midweek
Monday - Thursday

18 holes of golf with cart on
Schuss Mountain Golf Club
Twilight \$45*



SCHUSS
Designed by Warner Bowen



SUMMIT
Designed by William Diddel

*Twilight rates after 3pm June - August.
After 2pm in April, May, September, and October.

Shanty Creek Resort & Club
1.800.678.4111 • Bellaire, MI
www.ShantyCreek.com

Golf Listings

Continued from page 27

Wilderness Valley Black Forest: The Black Forest course, designed by Tom Doak, sits adjacent to the 18-hole course at Wilderness Valley. It was been nominated for best new course by *Golf Digest*. 585-7090.

Green Trees Golf Inc.: A par 60 course that plays to 3,100 yards, it's located two miles west of Gaylord off M-32. (989) 732-6006.

Marsh Ridge Resort: Formerly Old Norden Hem Resort, Marsh Ridge opened in 1992. The course features rolling hills and marshy areas, with water hazards on 12 holes. The par-72 course plays to 6,700 yards. Lighted driving range available. Located five miles south of Gaylord on Old 27. (800) 743-PLAY.

Michaywe' Pines Golf Course & Golf Center: Heavily bunkered, with well-separated fairways cut through pines and hardwood. Plays to 6,835 yards from back tees. (989) 939-7509.

Beaver Creek Resort, The Natural: Located on 150 acres at Beaver Creek Resort, The Natural was originally part of the Snow Valley Ski Resort in the 1920s. Jerry Matthews designed the picturesque layout. (989) 732-1785.

Otsego Club, The Classic: Designed by William H. Diddel, The Classic became the founding course of the Gaylord Golf Mecca. The signature hole, no. 18, is a par four measuring 310 yards from the back tees and offers panoramic views. (8770 GOLF-175.

Otsego Club, The Lake: Voted the third best new golf course in America when it opened in 1987, The Lake Golf Club features beautiful views and water on 10 holes. Plays to 6,508 yards. Located on Opal Lake Road, six miles south of Gaylord. (989) 732-5181 or 1-877-GOLF-175.

Otsego Club, The Loon: This course is located between Marsh Ridge Resort and Michaywe' golf development on the south side of Gaylord. It's a par-71 course that plays to 6,800 yards from the championship tees. Call (989)-732-5181 or (877) GOLF-175.

Otsego Club, The Tribute: Voted one of the top 10 new courses in America by Sports Illustrated. It was designed by Rick Robbins and former PGA Tour player and NBC golf commentator Gary Koch. It features rolling elevation changes through forested valleys with spectacular views. The tee on the third hole overlooks the Sturgeon River Valley 732-5181

Continued to page 31

7^ Tcha]ie ° ([ea` VæX
z? [UZ]YS`ie9 dSfVæf #* YæXZaVæS

, 6a` <aei [S] † Xæd_ VæW[fadaXB93 ? SYSl [` Wæ



B`Sk fZWægdæW
UæVæf fa FdShWæW
5 [fkæ ZVæSdæzz
7^ Tcha]ž



ELMBROOK
TRAVERSE CITY

#) " Fai ` † WæSv
FæWæVæf[fd ?; &† (*&
S`#zæ&[ž#*"
i i i žV Tcha] YæVææ_



Wild Bluff

2005 SEASON

Golf & Gaming

PACKAGE

Package Includes:

- A one-night stay at Bay Mills Resort
- 18 holes w/cart on Wild Bluff Golf Course
- \$15 in dining credits for any of our restaurants • Two Free drinks
- One \$10 roll of quarters • Valuable table games coupons
- 20% off a purchase of merchandise in the Pro Shop or Gift Shop

Seasonal Rates Start At

\$95

MAY						
S	M	T	W	T	F	S
1	2	3	4	5	6	7
8	9	10	11	12	13	14
15	16	17	18	19	20	21
22	23	24	25	26	27	28
29	30	31				

JUNE						
S	M	T	W	T	F	S
5	6	7	8	9	10	11
12	13	14	15	16	17	18
19	20	21	22	23	24	25
26	27	28	29	30		

JULY						
S	M	T	W	T	F	S
3	4	5	6	7	8	9
10	11	12	13	14	15	16
17	18	19	20	21	22	23
24	25	26	27	28	29	30
31						

AUGUST						
S	M	T	W	T	F	S
7	8	9	10	11	12	13
14	15	16	17	18	19	20
21	22	23	24	25	26	27
28	29	30	31			

SEPTEMBER						
S	M	T	W	T	F	S
4	5	6	7	8	9	10
11	12	13	14	15	16	17
18	19	20	21	22	23	24
25	26	27	28	29	30	

OCTOBER						
S	M	T	W	T	F	S
2	3	4	5	6	7	8
9	10	11	12	13	14	15
16	17	18	19	20	21	22
23	24	25	26	27	28	29
30	31					

\$95* | \$119* | \$135*



For Reservations or more information Call:

1-888-422-9645

www.4baymills.com / www.wildbluff.com

11335 Lakeshore Drive • Brimley, Michigan 49715

*All rates are based on double occupancy and are subject to availability. Taxes and gratuities not included. Offer excludes holidays. Package subject to change or cancellation without notice.

Golf Listings

Continued from page 29

or (877) GOLF-175.

Treetops, Tradition: This course is designed for walking and is built to National Audubon Society specifications. One of the best courses in northern Michigan. (800) 444-6711.

Treetops, Masterpiece: This challenging course at Sylvan Resort was designed by Robert Trent Jones. It's very hilly and wooded, with many elevated tees and greens. Treetops is six miles east of I-75 in Gaylord. (800)-444-6711.

Treetops, Premier: The course was designed by Tom Fazio. Fazio, an internationally acclaimed golf course designer. (800) 444-6711.

Treetops, Signature: Designed by Treetops pro Rick Smith, the par-70, 6,653-yard course is already considered one of the finest in the area. The course opened eight summers ago and features big greens. (800) 444-6711.

Treetops, Threetops: A par three course designed by Treetops pro Rick Smith. The holes range from 96 to 216 yards and two that have vertical drops of 90 and 170 feet. (800) 444-6711.

Wilderness Valley Black Forest - Golf Club: This Valley course features large greens and tree-lined fairways. The course is located 12 miles east of Mancelona along C-38. (989)-585-7090.

WEXFORD COUNTY

Briar at Mesick Golf & Country Club: Nestled on rolling terrain with woods, streams and ponds, This

18-hole course is located 26 miles south of Traverse City on M-115. It is 18 miles north of Cadillac and one mile east of Mesick. 885-1220.

Bunker Hill Golf Course: This nine-hole layout features tree-lined fairways. It's scenic and challenging. 775-3330.

Caberfae Peaks Ski & Golf Resort: Located in the heart of the Manistee National Forest. It plays to more than 7,000 yards. 862-3000.

Cadillac Country Club: Located on M-55 in Cadillac, just west of M-115 junction. The 18-hole course plays to 6,017 from back tees. 775-9442.

El Dorado: This unique course features wide fairways and big greens and is located just off U.S. 131. (888) DRIVE18

Emerald Vale Golf Club: Features a combination of links style holes with rolling terrain that weaves through pines, hardwoods and meadows. Located 35 minutes south of Traverse City and 15 minutes north of Cadillac near Manton. (800) 890-3407 or 824-3631.

Lakewood on the Green Golf Course: A scenic course, it is fairly short but challenging with tight fairways and slightly rolling greens. Located 2.5 miles west of M-115 on M-55. 775-4763.

McGuire's Resort: There are two courses at McGuire's. One is a nine-hole layout that plays to 2,792 yards. The other is 18 holes and plays to 6,443 yards. This course features wide, rolling fairways. There are many trees, but the course is still fairly open. Well-kept greens are large and slightly rolling. 775-9947.

 <p>18 Holes \$25 Weekdays \$29 Weekends Per Person Twin Birch GC</p>	 <p>TWIN BIRCH Golf Digest Says "Fun Course, Great Value, Great Greens" 18 Picturesque Holes along the Boardman River Dine with us at Birdies Pub</p>						
<p>* Expires 6/9/05 * Advanced tee times required * Must present coupon * Maximum 4 players per coupon</p>	<table border="0"> <tr> <td>Monday Night</td> <td>16 Oz Porterhouse Steak</td> <td>\$9.95</td> </tr> <tr> <td>Friday Night</td> <td>All You Can Eat Fish Shrimp</td> <td>\$8.50 \$11.50</td> </tr> </table>	Monday Night	16 Oz Porterhouse Steak	\$9.95	Friday Night	All You Can Eat Fish Shrimp	\$8.50 \$11.50
Monday Night	16 Oz Porterhouse Steak	\$9.95					
Friday Night	All You Can Eat Fish Shrimp	\$8.50 \$11.50					
<p>Golf Nut All Day Golf w/ Lunch \$5.00 off</p>	<table border="0"> <tr> <td>Saturday Night</td> <td>Prime Rib w/ Jumbo Shrimp</td> <td>\$14.95 \$17.95</td> </tr> </table> <p>Ph: (231) 258-9691 www.twinbirchgolf.com One mile east of intersection at M-72 & 131 on County Rd 612 Kalkaska</p>	Saturday Night	Prime Rib w/ Jumbo Shrimp	\$14.95 \$17.95			
Saturday Night	Prime Rib w/ Jumbo Shrimp	\$14.95 \$17.95					

*3 Championship Courses - The Bear by Jack Nicklaus,
The Wolverine by Gary Player, and Spruce Run*



Junior, Twilight and Replay Rates • Practice Facility • Rental Clubs •
PGA Pro Lessons • Jim McLean Golf School • Clubhouse Grille •
Open to the Public • Memberships Available

**Call 231-938-2100 or make your tee times online at
www.grandtraverseresort.com.**

100 Grand Traverse Village Blvd. • Acme, MI 49610 • www.GrandTraverseResort.com
Owned and Operated by the Grand Traverse Band of Ottawa and Chippewa Indians