

The Nancy Albrecht Group



Torch Winds

Custom Built and beautifully designed contemporary. Many extraordinary details are included in this 4 bedroom, 2½ bath freshly-built home. Gorgeous open solid oak staircase. Elegant master suite featuring vaulted ceiling, walk-in closet, whirlpool tub and separate ceramic shower. Great room is very inviting open and bright with gas fireplace. Comfortable sitting room and numerous extras such as: oversized 3-car garage, surround sound, central air, 6-panel doors and the list goes on. Awesome large lot with distant Torch Lake views. \$349,900.



Immaculate East Side Beauty.

This 4 bedroom, 2½ bath home has an elegant open design. Gorgeous maple flooring throughout including custom staircase, cabinetry, designer kitchen with granite countertops, leaded-glass cabinet doors, and island. Lots of windows overlooking wooded backyard. Large master suite offers vaulted ceiling, walk-in closet, bath with whirlpool tub and separate shower. Oversized wooded lot with underground sprinklers. Beautiful landscaping. \$349,900.



NANCY ALBRECHT

Associate Broker

231-409-4444

www.nancyalbrecht.com

*Estate Size Parcels
starting at
\$57,900*

1-800-365-7190

Serving Grand Traverse and Surrounding Counties
3922 East M-72 • Acme, MI 49610

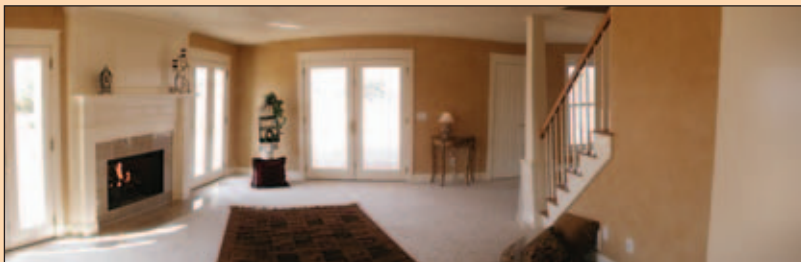


5/10-744361-10

Colonial Square

Construction, Inc.

Quality Custom Homes
-Creative Design.



Colonial Square Construction, Inc. is a residential building company specializing in original designs with unique architectural features.

Call for a personal tour of previous showcase homes and to receive information on our newest custom showpiece home available in early 2005.



Gary Roush, owner, is an art major who has used his creativity to design original floor plans featuring architectural details that are not likely found in competitively priced homes. Mr. Roush has been featured in *Traverse Magazine* and the *Record-Eagle* for his woodworking talents and creative designs.

For more information call (231) 342-9380 or email: gkroush@charter.net