

WINERY GUIDE

# Area vinters ready for new round of visitors

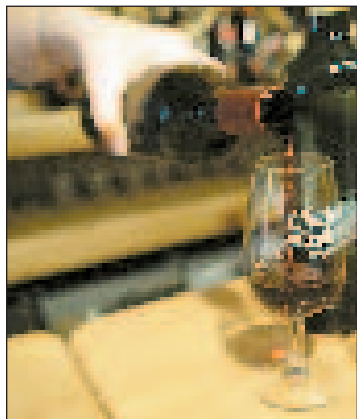
BY DANA GEORGE

Special to the Record-Eagle

Looks like there's plenty for wine lovers to look forward to this summer. The newest wines are top notch, say area vintners.

Chateau Chantal released the third of its Jazz at Sunset wines. The first two in the series are called "Twilight" and "Evening." The newest, a Blanc de Blanc sparkling wine, will be known as "Tonight."

There might be a few surprises for returning visitors to Chateau Chantal. In addition to adding eight rooms to the bed and



breakfast, the winery has expanded and remodeled the tasting room.

"We opened the room up so that there's a better

flow, allowing people to come in and out of the tasting room a lot easier," said Jennifer Cooper, bed and breakfast manager.

Over at Bel Lago Vineyards and Winery in Cedar, Charlie Edson is also excited.

"We've got a new 2002 Riesling; it's one of the wines I'm pretty thrilled about," Edson said.

Edson says the 2002 vintage in general was "outstanding." In addition to a new Pinot Grigio and Chardonnay, Bel Lago Vineyards is offering a Cabernet Franc and other

red varieties aged in American oak called "Tempesta 2002."

Chateau De Leelanau in Suttons Bay is also offering a new Pinot Noir. Tasting room manager Bonnie Supina describes the new wine as wonderful.

"It has a really beautiful color and almost a spicy finish," Supina said.

With all the wineries in

the area and all the new wines being launched this spring, there's no place better for a wine lover than northern Lower Michigan.

"People used to come to visit the area and say, 'Oh, I didn't know there were wineries here,'" said Supina. "Now, our wineries are becoming the destination."

## Area wineries

### Bel Lago Vineyards and Winery:

Located just north of Cedar on County Road 643 (South Lake Shore Drive). Spring hours: noon-5 p.m. Saturday and Sunday; May-Nov.; daily from 11 a.m.-6 p.m.; call for winter hours. 6530 South Lake Shore Drive, Cedar. 228-4800, ext. 102.

**Black Star Farms:** Open daily noon-5 p.m. before Memorial Day; Summer hours (beginning Memorial Day weekend) are 11 a.m.-6 p.m. Monday-Saturday, noon-5 p.m. Sunday. 10844 E. Revold Road, Suttons Bay. 271-4970.

**Boskydel Vineyards:** Located at the corner of Otto Road and County Road 641. Open daily from 1-6 p.m. 7501 E. Otto, Lake Leelanau. 256-7272.

**Bowers Harbor Vineyards:** Located on the Old Mission Peninsula. Open 10:30 a.m.-6 p.m. Monday-Saturday, noon-5 p.m. Sunday. 2896 Bowers Harbor Road, Traverse City. 223-7615.

**Chateau Chantal:** Located on the Old Mission Peninsula, twelve miles north of Traverse City on M-37. Summer hours are 11 a.m.-5 p.m. Monday-Saturday, noon-5 p.m. Sunday. 15900 Rue de Vin, Traverse City. 223-4110.

**Chateau de Leelanau:** In barn at Hilltop Road and M-22, Suttons Bay. Spring hours: 11 a.m.-5 p.m. Tuesday-Friday, 11 a.m. 6

p.m. Saturday, noon-5 p.m. Sunday; Summer hours (late May): 11 a.m.-6 p.m. Monday-Saturday, noon-5 p.m. Sunday. 5048 S. West Bay Shore Dr., Suttons Bay. 271-8888.

**Chateau Fontaine:** Located on the west side of Lake Leelanau on French Road. Open June-Oct. noon-5 p.m. 2290 S. French Road, Lake Leelanau. 256-0000.

**Chateau Grand Traverse, Ltd.:** At the winery eight miles north on M-37 on the Old Mission Peninsula, 12239 Center Rd., May, Oct., Nov. hours: Monday-Saturday 10 a.m.-6 p.m., Sunday noon-5 p.m., June-Aug. hours: Monday-Saturday 10 a.m.-7 p.m., Sunday noon-6 p.m. 223-7355.

**Cicccone Vineyard:** Located eight miles north of Traverse City on Hilltop Road off M-22. Open 12 p.m.-6 p.m. daily. 10343 E. Hilltop Rd., Suttons Bay. 271-5551.

**Good Harbor Vineyards:** Located three miles south of Leland on M-22 behind Manitou Farm Market and Bakery. May through Sept. hours are 11 a.m.-5 p.m. Mon.-Sat. and 12 p.m.-5 p.m. Sun. R. 1, Box 888, Lake Leelanau. 256-7165.

**L. Mawby Vineyards:** On Elm Valley Rd. south of Suttons Bay (take M-22 to Hilltop Rd. to S. Elm Valley Rd.). May hours: Thursday-Sunday noon-6 p.m.; June-Aug: noon-6 p.m. daily. 4519 S. Elm Valley Rd., Suttons Bay. 271-3522.

**Leelanau Wine Cellars:** Located in Omena on the east side of the Leelanau Peninsula, between Suttons Bay and Northport. April & May hours: 10 a.m.-5 p.m. Monday-Friday, 10 a.m.-6 p.m. Saturday, noon-4 p.m. Sunday; Summer hours (starting in June): 10 a.m.-6 p.m. Monday-Saturday, noon-5 p.m. Sunday. 12683 East Tatch Rd., P.O. Box 68, Omena. 386-5201.

**Leorie Vineyard:** 6994 Peninsula Drive, Traverse City. 933-1133.

**Nicholas Black River Winery:** 5670 Black River Road, Cheboygan. 625-9060.

**Peninsula Cellars:** Located at the corner of Center and Carroll roads on Old Mission Peninsula. Open May-Oct 31, 10 a.m.-6 p.m. Monday-Saturday, noon-6 p.m. Sunday. 11480 Center Rd., Old Mission Peninsula. 933-9787.

**Raftshol Vineyards:** Located 2 1/2 miles north of Suttons Bay on M-22. Open daily from noon-6 p.m. 1865 N.W. Bayshore Drive, Suttons Bay. 271-5650.

**Shady Lane Cellars:** Located on the Leelanau Peninsula between Traverse City and Suttons Bay. Tasting hours are noon-6 p.m. daily May 1-Oct. 31 or by appointment. 9580 Shady Lane, Suttons Bay. 947-8865.

**Willow Vineyards:** On Hilltop Road south of Suttons Bay (take M-22 to Hilltop). Open May-Oct. from noon-6 p.m. Thursday-Sunday. 10702 E. Hilltop Rd., Suttons Bay. 271-4810.

## The Leelanau Club

AT BAHLE FARMS



*Witness the grandeur of Leelanau County while experiencing exceptional golf in Suttons Bay.*

**\$39** Monday-Thursday

**\$49** Friday, Saturday & Sunday

**18 Holes with Cart**  
**May 14th - June 17th**

**271.2020**

*for Tee Times & Information*

**Minutes from West Bay, from Traverse City take M22 (9 miles) north to Fort Road, west to 633, north to Otto Road, west 1 mile.**

**www.leelanaclub.com**