

Portable electric heaters

Gas-fired furnaces provide more heat for your energy dollar than do any other type. Better than steam, coal, oil, propane, and yes, even better than heat pumps. But, most gas-fired furnaces are designed to heat large areas. In other words, if you're having a party and want to warm the whole house, a gas-fired central heating unit will give you the best bang for your buck. And even though portable electric heaters are probably the least-efficient and certainly the most expensive type of heating device you can use, when you retire to that special room where you like to rest, they can be a moneysaving friend. Space heating with electricity still makes sense when heat is needed in one room, and the rest of the house is empty. Make sure your portable heater is ul-approved, and that it has a tip-over warning device.

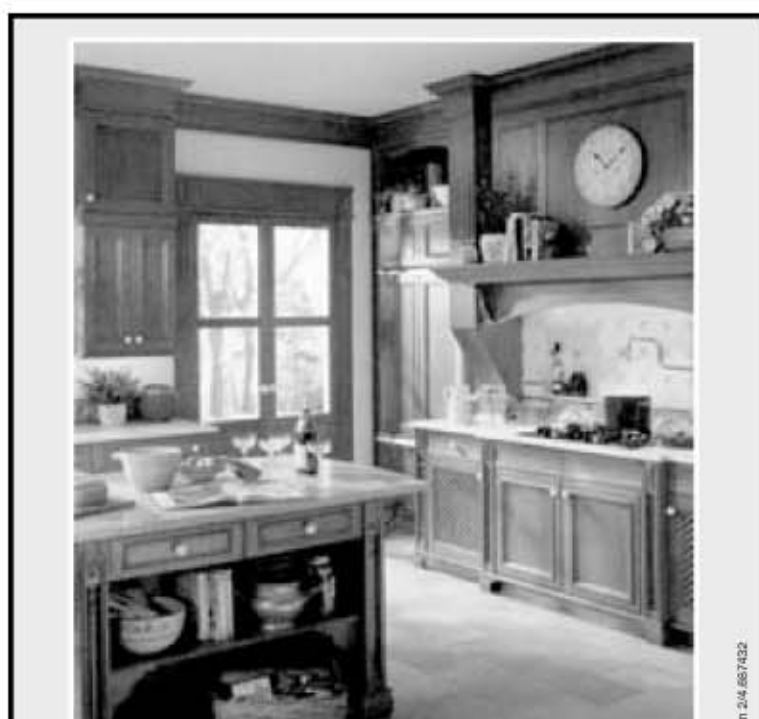
No-hassle removal of non-skid appliques

Adhesive-bound appliques come in a variety of colors, shapes, and sizes, and are designed for bathtubs that aren't manufactured with an integral nonskid surface. They serve a very important purpose; studies have shown that the majority of home accidents occur in or around bathtubs. However, they do tend to deteriorate over time and need to be removed and replaced.

If your tub has a porcelain finish, the most effective method of removal is by use of a sharp razor blade. Any adhesive residue that remains can be removed with a mild detergent and warm water.

Fiberglass or acrylic tubs pose a more difficult problem. Their finish easily can be damaged if great care is not taken. Do not use a razor blade with these tubs. Manufacturers of these synthetic products recommend using acetone and a clean, soft cloth.

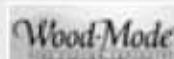
And remember to take safety measures. Be sure there is adequate ventilation when working around acetone vapors. Should you not be successful in removing the appliques, there are firms that specialize in tub refinishing. Some even are able to install a new clear, nonskid surface over the entire area.



What inspires you?

Perhaps it's the midnight sun of Scandinavia. Whatever your inspiration, as Wood-Mode design professionals we understand how important the feeling of your new kitchen is to you. Which is why we'll do everything possible to help you achieve the look you want.

Northwood Kitchens
10240 Cherry Bend Rd., Traverse City • 231-941-1470
northwood@chartermi.net • northwoodkitchen.com



ASK FOR DUETTE®, LUMINETTE®, SILHOUETTE® AND VIGNETTE® WINDOW FASHIONS.



The only beautiful way to cover your windows.

exclusively

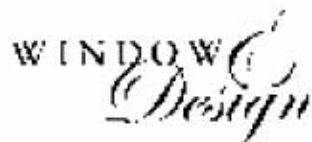
HunterDouglas
window fashions

For full control of light, privacy and energy efficiency, ask us about these exclusive window fashions that complement and enhance any décor.

Complete Interior Design Services
Established 1980

- Furniture • Fabric • Wall Coverings
 - Accessories • Window Coverings
- Shop at home or visit our showroom.*

817 Bay Street
Traverse City
231-941-1241
800-828-7512



© 2002 Hunter Douglas Inc. ® Registered trademark of Hunter Douglas Inc. ™ Trademark of Hunter Douglas Inc.

WINTER

Prices marked down on items throughout the store. Many closeouts.

Thousands of sq. ft. of 6" x 6" seconds in floor tile in many colors! More arriving every day! 30 truckloads of closeout tiles just purchased!

VCT 12" x 12" FLOOR TILES **59¢** sq. ft. Seconds

99¢ - \$1.25 sq. ft.

18" x 18" FLOOR TILES
2 neutral stone looks in off-white & beige — 1st quality (regular retail \$3.99 sq. ft.)

Large Quantities! **99¢** sq. ft. Offer good 'til gone!

This is Not Just Your Little Neighborhood Sample Board Shop

- **12" x 12" Ceramic Floor Tile**
1st quality, Pacifica White & Pacifica Cafe (regular price **\$1.25** sq. ft., \$2.35 sq. ft.)
- **12" x 12" Galena & Jasper**
2 great stone looks in a slightly textured finish. (regular price **99¢** sq. ft., \$2.99 sq. ft.)
- **White Cornergons** **99¢ - \$1.25** sq. ft.
8" & 12", 1sts & 2nds
- **Charleston Green & Charleston Bone**
Closeout! 8" x 8" 1sts. (normal retail **\$1.35** sq. ft., \$2.99 sq. ft.)

TILE MART

832 U.S. 31 South • Traverse City
(3 miles south of Grand Traverse Mall)

(231) 943-8881

Hours: Mon., Tues., Thurs., & Fri. 9-6
Saturday 9-5
Wednesday open 'til 8 p.m.

