

RESOURCES

■ **Criteria for Federal Water Quality Standards:**

www.epa.gov/waterscience/criteria.

■ **Federal Water Quality Standards:**

www.epa.gov/waterscience/standards

■ **Federal Drinking Water Standards:**

www.epa.gov/safewater/mchl.html

■ **State Water Quality Standards**

www.michigan.gov/deq

■ **Rain gardens:**

www.raingardens.org
www.stormwatercenter.net

■ **Michigan Sea Grant:**

www.miseagrant.org

■ **Lake Michigan Lakewide Management Plan (LAMP):**

www.epa.gov/glnpo/michigan.html

■ **Aquatic Nuisance Species Task Force (cosponsored by U.S. Fish and Wildlife Service and National Oceanic and Atmospheric Administration):**

www.anstaskforce.gov

■ **Great Lakes Information Network:**

www.great-lakes.net

■ **Great Lakes Panel on Aquatic Nuisance Species:**

www.glc.org/ans

■ **The Michigan Land Use Leadership Council:**

www.michiganlanduse.org

■ **Smart Growth:**

www.smartgrowth.org

■ **Michigan Land Use**

Institute:

www.mlui.org

■ **Center for Livable**

Communities:

www.lgc.org

■ **Area Beach Testing**

Results:

www.deq.state.mi.us/beach/

■ **Great Lakes Beachcast:**

www.great-lakes.net/beachcast

■ **Fish Advisories, Michigan Dept. of Community Health:**

www.michigan.gov/mdch

■ **EPA Wetlands Office:**

www.epa.gov/owow/wetlands

■ **MDEQ Wetlands Info:**

www.michigan.gov/deq

■ **National Wetlands Inventory:**

http://wetlands.fws.gov

■ **Ecosystem Valuation:**

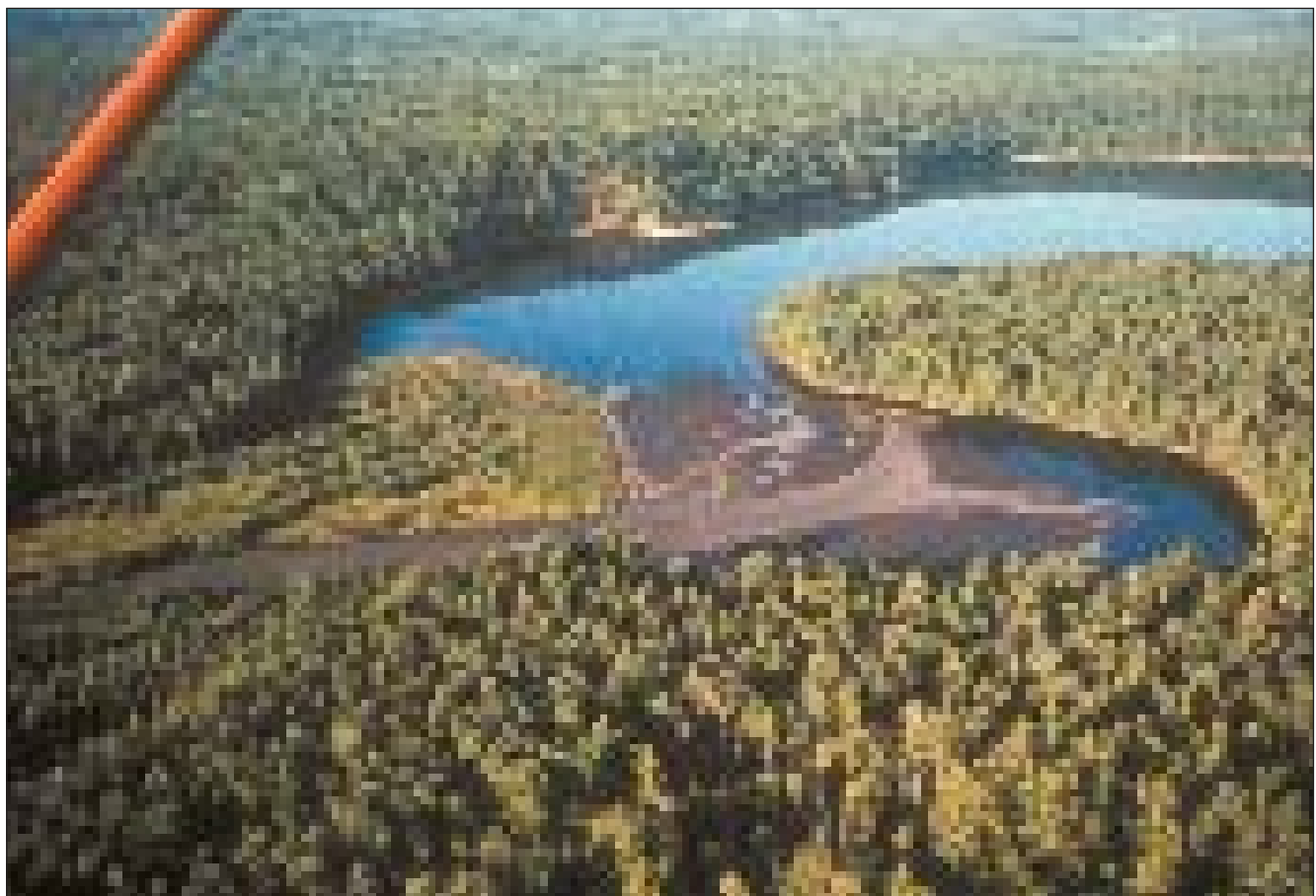
www.ecosystemvaluation.org

■ **The Economic Value of Wetlands:**

www.ramsar.org/lib_val_e_1.htm

■ **EPA beaches:**

www.epa.gov/OST/beaches



The Watershed Center
staff

Anne Brasie –
Executive Director

John Nelson –
Grand Traverse
Baykeeper

Sarah U'Ren –
Project Coordinator

Anne Hansen –
Office Manager/Grant
Administrator

The Watershed Center Grand Traverse Bay is a private, non-profit 501(c)3 dedicated to preserving, protecting, and advocating for the environmental health of the Grand Traverse Bay and its watershed to insure regional economic sustainability and water quality for future generations. We achieve this mission through outreach, education, collaboration and research.

Please join us for our Annual Meeting on
Thursday, November 6 from 6-8:30 p.m. at
Great Wolf Lodge.

■ **Guest Speaker: Ken De Beussaert, Director of the Office of the Great Lakes, Michigan Department of Environmental Quality.**

■ **Tickets are \$35. Call 935-1514 for more information.**

■ **This event is sponsored by Global Remediation Technologies, Floor Covering Brokers, and Peninsula Construction.**



Yes, you should like us to be your
Grand Traverse Bay.

1000 Grand Traverse Bay
Grand Traverse Bay, MI 49735
Phone: 935-1514
Fax: 935-1515
Email: info@watershedcenter.org

Website: www.watershedcenter.org

1000

1000

1000

1000

1000

1000