

**121 Rivers Edge, Unit 3501
Traverse City, MI 49684**

Parade Home 17

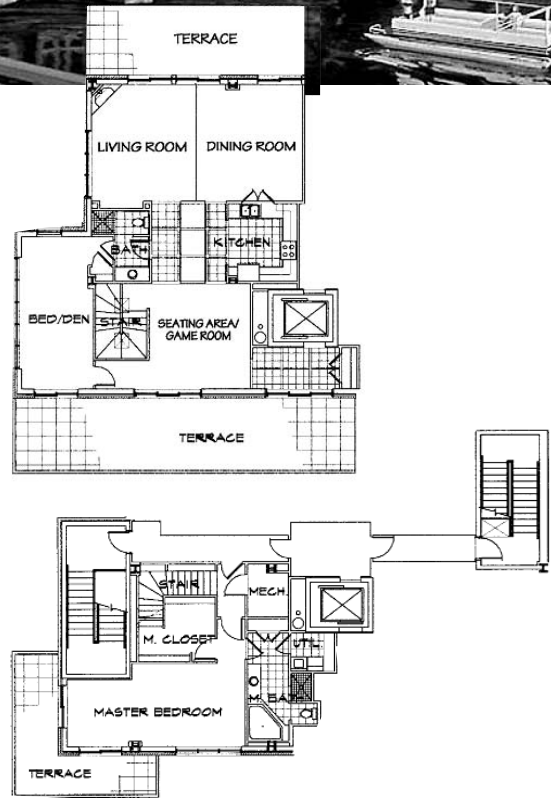


2325 square foot - Living
1000 square foot - Terraces
2 Bedrooms, 2 Baths

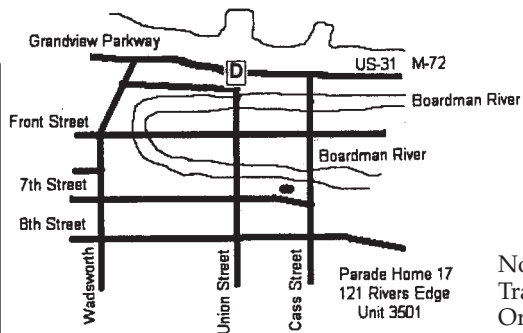
BREATHTAKING VIEWS OF THE CITY AND GRAND TRAVERSE BAY WILL BE YOURS AS YOU ENJOY THE PRIDE OF OWNERSHIP OF THIS STUNNING PENTHOUSE IN THE RIVERS EDGE COMMUNITY.

Spanning both 4th and 5th floors this unique one of a kind resident features a grand terrace that boasts a 1000 square feet. From activities on the Boardman River, to sleek sailboats sprinting across Grand Travers Bay you'll feel like you have all of Traverse City at your feet.

Semi-custom cabinetry-provided by Northwood Kitchens, flat screen TV, luxury /glamour closet, granite countertops, stainless steel appliances, high-end bath fixtures, remote control direct vent fireplace with custom designed surround by Mantle Experts, 9' coffered ceilings, select faux finishes, cherry doors with custom painted trim, garden Jacuzzi tub and tiled shower in the master bath, multi-room surround sound, communications system, simplex security system, private elevator and underground parking making it safe and easy.



MAC Custom Homes
Michael Collings
542 Rusch Road
Traverse City, MI 49686
231-935-4609



Non Profit Host:
Traverse Symphony
Orchestra Associates