

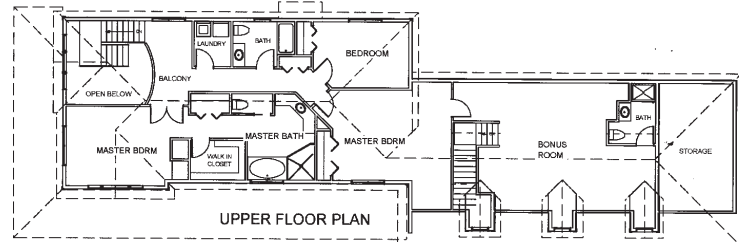
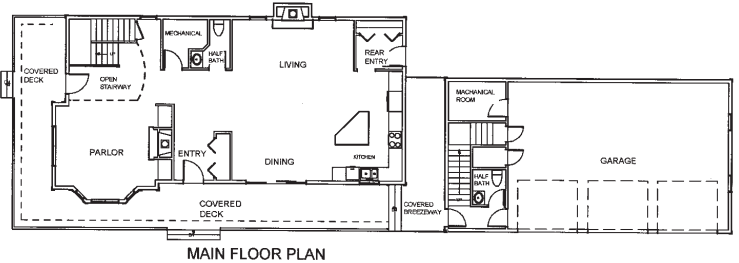
**6410 Peninsula Drive
Traverse City, MI 49686**

Parade Home 16

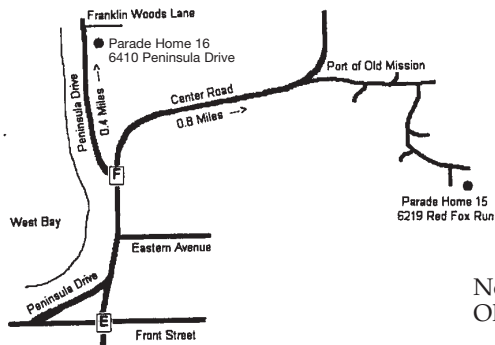


3400 square feet
3 Bedrooms
3 Baths
2 1/2 Baths

Located at the base of Old Mission Peninsula, close to downtown and shopping, this low maintenance home features an open and inviting floor plan. The main level living areas include two fireplaces, 9' ceilings, Brazilian cherry hardwood flooring, and custom kitchen cabinetry. An open stairway leads to the loft and second floor master suite. Amenities of the suite include "his" and "hers" closets, compartmentalized bath, tiled shower and Jacuzzi whirlpool tub. The balance of the second floor is comprised of a convenient laundry area, two additional bedrooms, and a second full bath. A bonus room over the three-car garage is accessible from upstairs or from a second enclosed stairway off the garage. This uniquely designed room, which includes a full bathroom, allows this area to be used in a variety of ways from media room, to office, to guest suite. Other less visible features include radiant in-floor heating on the main level, two high efficiency forced air furnaces, central air conditioning, and central sound system. A covered wrap-around porch and brick patio extends the living area to the out of doors and provides ample space for entertaining. This home maintains shared West Bay access with the Franklin Woods Subdivision.



K.M. Kellett, Inc.
Kurt Kellett
2323 Aero Park Court
Traverse City, MI 49686
231-922-2646



Non Profit Host:
Old Mission Women's Club