

4683 Arbor Latch Road
 Traverse City, MI 49684

Parade Home 3



1933 square foot
 3 Bedrooms
 2 1/2 Baths
 2 car attached garage
 1232 square foot

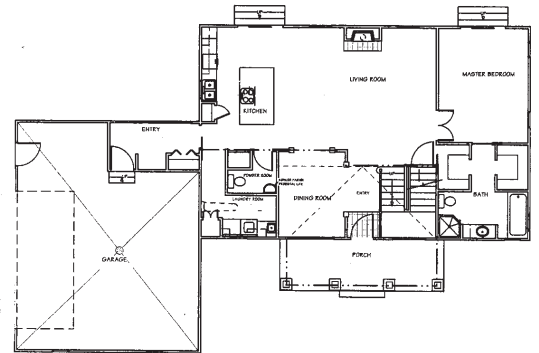
Another original floor plan by DesignCraft Homes, this Arbor Grove Subdivision Parade Home is nestled in the woods off Cedar Run Road. At 1933 square feet this home is cleverly designed to feature three bedrooms, two and a half baths and a full basement ready to finish for future guests. A custom maple cabinet kitchen with rustic finish details birds eye

maple flooring and granite tops. A well-balanced floor plan applies unique use of vaulted and nine-foot ceilings.

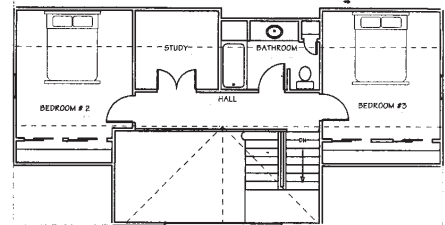
Throughout this home you will notice unique focal points employing natural wood trims, exposed beams and posts, ceramic tile, decorator paint schemes and drywall specialties. Go rustic without compromising style!

DesignCraft Homes' touches are applied inside and out, highlighting premium quality workmanship and the finest in appointments. Escape to an intimate master bathroom designed with natural maple cabinets, granite tops with integral bowls and a "Rainshower". A complete Kohler fixture package is seen throughout this home. Enjoy the views of the woods through Weathershield's ProShield casement windows with transoms or simply step from the kitchen and master bedroom.

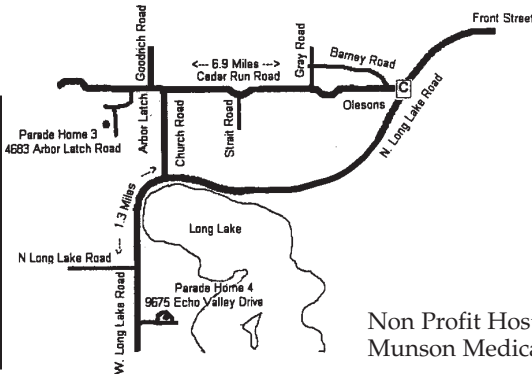
We are celebrating our 8th consecutive year in the Parade of Homes Tour. Come visit our 2003 home and see how DesignCraft Homes continues...
 ...Building a Sterling Reputation On Premium Quality!



FIRST FLOOR PLAN



DesignCraft Homes
 by Duensing Construction
 Scott Duensing / Jennifer Martin
 3501 Kirkland Court, #E
 Williamsburg, MI 49690
 231-938-0300
 www.designcrafthomes.net



Non Profit Host:
 Munson Medical Center Volunteers