

*Color tours by car*

◀Continued from Page 24

**Manitou Islands.** Leave Leland on M-22, en route to Northport.

In Northport, turn left at the blinking light onto 201. Follow 201 as it snakes through town, then turn left on Third Street. Left again at the sign for Bramen Hill Recreation area in just over a half-mile. You'll curl around the hill, climbing to an overlook of Northport Bay and all across Grand Traverse Bay, to the mainland.

Leave Northport on M-22 south, bound for Omena and Suttons Bay. Take M-22 back to Traverse City.

**Antrim:**

From downtown Traverse City, go east on Grandview Parkway, which becomes Front Street and later Munson Avenue. Continue on Munson Avenue/U.S. 31 north toward Acme, then go east on M-72. Past Turtle Creek Casino, turn left on Hill Road, at the Rapid City/Alden sign. At the stop sign, go left onto Rapid City Road, through Rapid City and Alden. Ahead is Torch Lake. Leaving Alden, the road becomes East Torch Lake Drive.

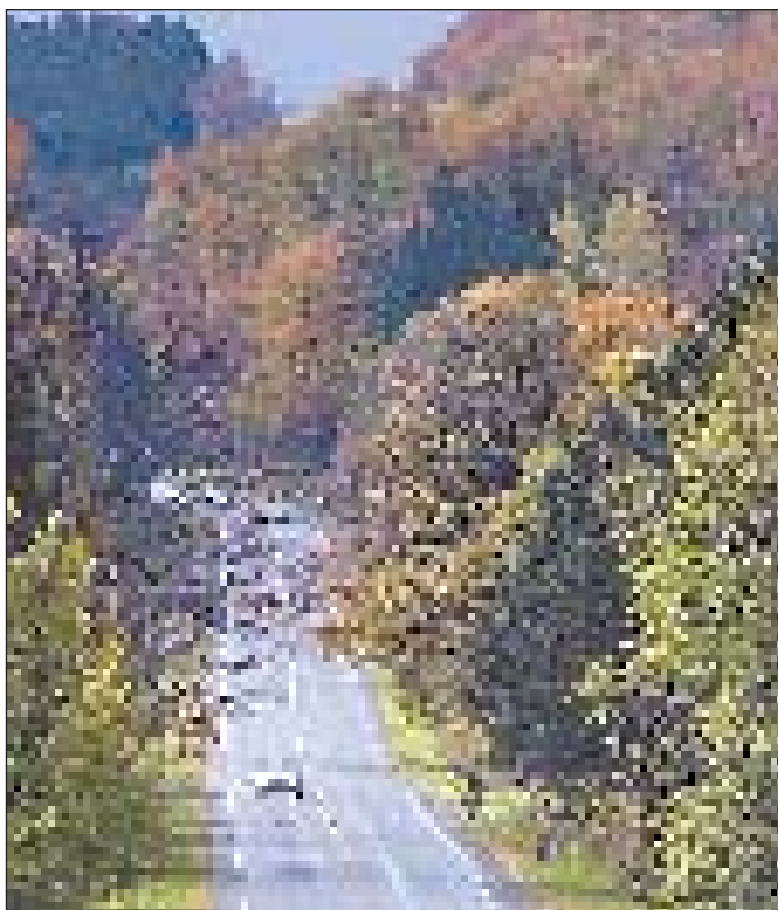
At the next fork, veer left to stay on East Torch Lake/593, driving north. Follow the curve to the right past the Bellaire/620 sign. Turn right on Bellaire/620. In Bellaire, the road becomes Cayuga. Continue straight through the blinker, and follow the curve out of town onto Derenzy.

Turn right on the unmarked road at the Alba sign. Right at stop sign onto M-66. Left onto 620/Alba Highway. Left onto U.S. 131 at the blinker.

A geographical landmark lies ahead, the 45th parallel, designating the halfway point between equator and North Pole. Drive about 3.5 more miles in Santa's direction, watching for the brown sign for Deadman's Hill Overlook, a left turn down a dirt road. The unassuming, even bleak entrance belies the spectacular, 180-degree view of the Jordan River Valley in store. Return on U.S. 131 south to Kalkaska, then M-72 west to Traverse City.

**Starting from Elk Rapids:**

North on U.S.-31 to Eastport. East on M-88 toward Central Lake. North on C.R. 65, east on Mohrmann Bridge Road, south on Rushton (becomes



Intermediate Lake Rd), south on Derenzy to C.R. 620 through Bellaire. South on East Torch Lake (C.R. 593) through Alden (becomes Crystal Beach Road) and north to Kewadin (becomes Cherry Ave) then south again (becomes Cairn Highway) back to Elk Rapids.

**Starting from Cadillac:**

M-55 east to M-66 north through Lake City. West on M-42 through Manton to U.S. 131 south. West on Boon to Harrietta, south on 11-1/4 Road. West on M-55, south on 7-1/2 Road (becomes 48th Rd). South on 11-1/4 Road to State into Lake County. East on Five Mile, north on Skookum, east to Eight Mile (becomes 20 Mile in Osceola County), east to U.S. 131, north to Cadillac.

**Starting from Manistee:**

U.S. 31 north to M-110 (Lakeshore Rd) to Portage Lake. East on Crescent Beach

Rd, north on M-22 through Onekama. West on Potter through Pierport, west on 13 Mile Rd to Lake Michigan. Backtrack 200 feet east. North on Lakeview, east on Shaef, north on M-22 through Arcadia (Scenic Highway), east on Grace. South on M-31, south on M-115 past Thompsonville. South on Yates, west on Nine Mile, south on Highbridge. West on M-55, south on U.S. 31 back to Manistee.

**Starting from Petoskey (including Cheboygan):**

U.S. 31 north to M-119, north through Harbor Springs to Cross Village. Left on Lake Shore to Lakeview (becomes Gill at Sturgeon Bay). Left on Cecil Bay, right on Wilderness Park Drive north to Mackinaw City. Pass under I-75 at the base of Mackinac Bridge. South on U.S. 23 (Cheboygan County Scenic Route) through Cheboygan. South on M-27 through Indian River. East on M-68 to U.S. 31 south to

Petoskey.

Note: This route includes the Tunnel of Trees between Harbor Springs and Cross Village on M-119. The scenic shoreline drive was originally a footpath carved over centuries by Native Americans.

**Starting from Gaylord:**

West on M-32 to East Jordan. West on Ellsworth Road (C.R. 626) to Ellsworth. West on Atwood Road (C.R. 48) to Atwood. North on U.S. 31 through Charlevoix, Bay Harbor and Petoskey on to Alanson. East on M-68 to Indian River. South on I-75 back to Gaylord.

Note: The Pigeon River Country elk herd is the largest free-roaming herd east of the Mississippi River. The best time for a sighting is actually during September's mating season. For a chance at a close-up view, stop at the elk-viewing area in Gaylord, just east across South Otsego Ave. from Wisconsin Street.

**FOLGARELLI'S**

- Wines
- Champagne
- Deli Sandwiches
- Gift Baskets
- Catering

424 W. Front St.

**941-7651**

10-10.su.720747

**ANTIQUES AT RAILROAD PLACE**

Specializing in Fine Antiques & Collectibles  
In Traverse City's Historic Railway Express Building

620 Railroad Place • Traverse City, MI. 49686  
Next to the Grand Traverse Dinner Train

**1-231-946-6600**

Proprietors Marilyn Flaherty & Clare Spaulding

10-10-720704-su

**\$100 Foursomes**

**The Leelanau Club**

AT BAHLE FARMS



*Witness the grandeur of Leelanau County while experiencing exceptional golf in Suttons Bay.*

**Fall Special**  
**\$100 FOURSOMES!**  
**Monday - Thursday**

IN OCTOBER

**\$100 FOURSOME**  
Includes 18 Holes with Cart for 4 Players

Valid Monday-Thursday in October. Must present coupon. Must have 4 players.

**Fall Rates Starting September 29th**

**\$35 Sunday-Thursday**  
**\$39 Friday & Saturday**

Includes 18 Holes with Cart

**271.2020** for Tee Times & Information

Minutes from West Bay, from Traverse City take M22 (9 miles) north to Fort Road, west to 633, north to Otto Road, west 1 mile.

www.leelanauclub.com