

# Endless Summer Fun



## Le Bear Waterfront Restaurant

*Every Monday Evening...  
Ellen Darlington on the Piano*

*Open for Lunch and Dinner Daily  
(except Wednesday)*

*Serving Breakfast Saturday and Sunday • 9-11*

*Reservations Suggested  
Lake St. at the Landing • Glen Arbor  
231-334-4640*

7/3-656074-CF



**TRAVERSE BAY  
ENTERTAINMENT**

**"Anything Is Possible"**

See the Outside  
Back Cover of this  
publication for  
Our Showroom  
Entertainment.

7/3-656072-CF



Northport Community Arts Center

## NCAC 2002 Summer Series

### Traverse Symphony Orchestra

July 20 • 4 p.m. and 8 p.m.

Funded in part by Leelanau Township Community Foundation

Kevin Rhodes, Conductor  
- Special "Pops Concert"



### The Nefarious Scheme

August 1, 3 • 8 p.m. August 4 • 4 p.m.

By Sue Hanson and Ann Bloomquist  
- A Musical Comedy

### Benzie Area Symphony Orchestra

August 25 • 4 p.m.

Dorothy Kunkel, Conductor

- 60 Piece Orchestra and The Village Voices

Series funded in part by:

**Leelanau Township  
community foundation**



Auditorium is located at 104 Wing St. (Northport Public School)  
Series Tickets: \$60, Student Series: \$40 Individual prices available  
For more information and tickets, call 231-386-5001

7/3-656484-CF

## BREEZE HILL GREENHOUSE

*"Buzz" on in*



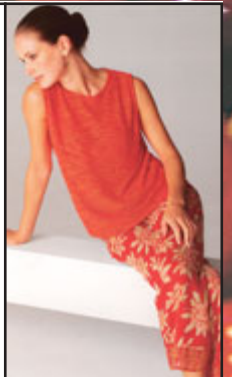
*for*

**Perennials!**

**941-7295**

7/3-656082-CF

SARAH  
ARIZONA



**molly's**  
105 Main St.  
Leland, MI  
256-7540

7/3-656078-CF

*The Peninsula's Most Eclectic  
& Fun Clothing Experience!*



Historic NORTHPORT  
119 Waukazoo  
**800-984-7007**

7/3-656079-CF

## the Potting Shed

- Annuals • Perennials
- Antique & Heirloom Roses
- Garden Design
- Antiques & Primitives, too!

Lake Leelanau, MI 49653  
231-256-7913

7/3-656080-CF

• DINING • SHOPPING • BOATING  
• GOLFING • ANTIQUING • SIGHT SEEING

7/3-656069-CF