

Continued from Page 37

4911. Traverse City Senior Center, Front and Barlow Streets.

9 A.M. - NOON FUN AND GAMES FOR SPECIAL KIDS

Sponsored by Tom's Food Markets, Prevo's Family Markets and Oleson's Food Stores

A fun-filled morning for hearing, visually, physically impaired, and developmentally disabled children. Activities include beeper baseball, ping pong blow, obstacle course, and frisbee fling, all topped off by a trip to the Midway where they will be hosted by Ivan and Agnes Arnold of Arnold Amusements. Interpreters for the deaf sponsored by Charter Communications. Festival Open Space at Grandview Parkway and Union Street.

9 A.M. - 9 P.M. HOLE-IN-ONE GOLF CONTEST

Sponsored by Traverse City



CHICKEN SKEWERS WITH CURRY

Ingredients:

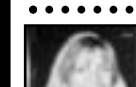
- 2 small chicken breasts
8 oz. Sorrento Mascarpone
2 low-fat yogurts
1 cube chicken flavor bouillon
1/2 cup olive oil
4 teaspoons curry powder
1 clove garlic
parsley
1 green pepper & 1 yellow pepper
cherry tomatoes
salt & pepper

Preparation:

Cut the meat and the 2 bell peppers into cubes. Grill the chicken and the vegetables separately. Set aside. Blend together in a food processor the Mascarpone, 2 yogurts, bouillon, olive oil, curry, garlic and parsley. Season with salt and pepper to taste. Arrange the meat alternating with the vegetables on skewers. Place in an oven-resistant dish. Drizzle with the Mascarpone sauce. Place in a prewarmed oven for a few minutes until warmed through. Serve immediately.

Grand Opening! NEW FOLGARELLI'S WINE ROOM ANNEX

Enjoy! Buon Appetito... from our family to yours!



117 S. Union St. Downtown Traverse City
424 W. Front St. • 941-7651

State Bank, Northwest Airlines, Passageways/Carlson Wagonlit Travel, Garland, in cooperation with WLDL Radio - Sunny 101.9

Daily awards and prizes. Daily winners return on Saturday for a chance to win a grand prize of a Toyota Tundra and a Baja Sport Boat. See Saturday, July 13, for details on the Golf Contest Finals. Bay Meadows Golf Course - follow Grandview Parkway (W) to Division (S) to West Front Street (W); turn right on Cedar Run Road to Barney Road.

9 A.M. SENIORS' STATE-SANCTIONED SHUFFLEBOARD TOURNAMENT

Sponsored by Grand Traverse Pavilions and Traverse City Light and Power. Equipment provided, or bring your own. Prizes awarded to top finishers. Must be 55 or over. Advance registration at Senior Center requested. Call 231-922-4911. Traverse City Senior Center, Front and Barlow Streets.

9:30 A.M. - 5 P.M. CLINCH PARK ZOO

Visit Northern Michigan's only zoo and see animals indigenous to Michigan. Zoo hours are 9:30 a.m. to 5:00 p.m. daily. Clinch Park Zoo, Grandview Parkway near Cass Street.

10 A.M. - 4 P.M. CHERRY ORCHARD TOURS AT AMON ORCHARDS

Amon Orchards will conduct tours at their orchards daily on the half hour. Amon Orchards is located two miles North of Acme on U.S. 31. Tour information will be provided at the National Cherry Festival

CenturyTel Information/Concierge Message Center located at the Open Space.

10 A.M. - 1 P.M. CHERRY ORCHARD TOURS IN THE HEART OF LEELANAU COUNTY

Sponsored by the Michigan Cherry Committee. Free Orchard tours at MSU NW Michigan Horticultural Research Station. (Follow Grandview Parkway to M-22 North, 4 miles to Crain Hill Road, turn left (West), then right (North) on Center Highway (County Road 633). Shuttle available from the Visitors Center.)

10 A.M. - 1 P.M. CHERRY CONNECTION: A LOOK AT FESTIVAL-FARM-FRUIT

Sponsored by Michigan Cherry Committee. A close-up look at cherry growing and harvesting for the whole family. Activities and displays include free orchard tours, "Kid's Korner," Petting Zoo, Pit Spit, Beekeeping and special cherry product tastings. Located at MSU NW Michigan Horticultural Research Station (Follow Grandview Parkway to M-22 North, 4 miles to Crain Hill Road, turn left (W), then right (N) on Center Highway (County Road 633). Shuttle available from the Visitors Center.)

9:30 A.M. - 5 P.M. CLINCH PARK ZOO

Visit Northern Michigan's only zoo and see animals indigenous to Michigan. Zoo hours are 9:30 a.m. to 5:00 p.m. daily. Clinch Park Zoo, Grandview Parkway near Cass Street.

10 A.M. - 4 P.M. CHERRY ORCHARD TOURS AT AMON ORCHARDS

Amon Orchards will conduct tours at their orchards daily on the half hour. Amon Orchards is located two miles North of Acme on U.S. 31. Tour information will be provided at the National Cherry Festival

10 A.M. - NOON BICYCLE RODEO

Sponsored by Big Boy Restaurants. A chance to use your bicycle skills on an obstacle course for children ages 5 to 10. Registration at 9:30 a.m. Children are asked to bring

their own bike and helmets. Horizon Outlet Center, U.S. 31 South.

10 A.M. - 11 P.M. CenturyTel Festival Open Space and Information and Message Center

Enjoy the Johnsonville Brat Tent, the Country Fresh Ice Cream / Sara Lee Cherry Pie Pavilion, Pepsi products, Michigan Cherry Committee's Informational Booth, and the Choose Cherry! Farm Market Tent, as well as live entertainment, bingo, and Festival souvenirs, with convenient shipping courtesy of the U.S. Postal Service. Back by popular demand is the Country Fresh Family Oasis Food Court area. Family friendly services include a baby changing and feeding area. The Festival Open Space Park venue also offers promotional displays and samplings from Festival sponsoring companies including CenturyTel, West Bend, Kitchen Craft, and Discover Card. Stop by the Festival's First Aid facility, sponsored by PPOM, with Munson Medical Center and North Flight EMS Paramedic services, or register your 2002 Commemorative Gold Pins and check for lost items, friends, family, or messages at the CenturyTel Information and Message Center. Festival Open Space at Grandview Parkway and Union Street.

12 - 6 P.M. TEEN ACTIVITIES

Sponsored by Mountain Dew, in cooperation with WKPK Radio - The Peak 106.7. Calling all teens! Back by popular demand at the volleyball courts near the Festival Open Space, a day of entertainment and activities for teens, including wall climbing, cherry pit spit, pie eating, frisbee golf and more. West End Park Beach Volleyball Courts on Grandview Parkway.

12 - 2:30 P.M. ROYAL PAGEANT OF FASHION & LUNCHEON HOSTED BY PARK PLACE HOTEL

Sponsored by Davenport University, in cooperation with WKPK Radio - The Peak 106.7. The latest fashions modeled by the National Cherry Queen and this year's queen candidates. Interpreters for the deaf sponsored by Charter Communications. Tickets: \$15.00. Purchase tickets in advance at the Festival office. Park Place Hotel, Park and State Streets.

1 P.M. SARA LEE BAKERY CHERRY PIE EATING

Children will enjoy a chance to fish and win prizes at the Children's Fishing Pond. Fish are cooled and donated to the Clinch Park Zoo for our hungry bears and otters. Fee required. Festival Open Space at Grandview Parkway and Union Street.

10 A.M. - 7 P.M. WELCOME TO CHERRY-LAND: THE HARVEST AND THE CELEBRATION

The newly renovated Grand Traverse Heritage Center offers among its exhibits a look at the cherry industry. Admission is \$3 for adults, \$1.50 for children with those under 5 years admitted free. 322 Sixth Street, two blocks off Union Street.

11 A.M. - MIDNIGHT MIDWAY ARNOLD AMUSEMENTS

Visit Traverse City's own favorite amusements near the Festival Open Space. Grandview Parkway at Union Street.

12 - 6 P.M. TEEN ACTIVITIES

Sponsored by Mountain Dew, in cooperation with WKPK Radio - The Peak 106.7. Calling all teens! Back by popular demand at the volleyball courts near the Festival Open Space, a day of entertainment and activities for teens, including wall climbing, cherry pit spit, pie eating, frisbee golf and more. West End Park Beach Volleyball Courts on Grandview Parkway.

12 - 2:30 P.M. ROYAL PAGEANT OF FASHION & LUNCHEON HOSTED BY PARK PLACE HOTEL

Sponsored by Davenport University, in cooperation with WKPK Radio - The Peak 106.7. The latest fashions modeled by the National Cherry Queen and this year's queen candidates. Interpreters for the deaf sponsored by Charter Communications. Tickets: \$15.00. Purchase tickets in advance at the Festival office. Park Place Hotel, Park and State Streets.

1 P.M. SARA LEE BAKERY CHERRY PIE EATING

Children will enjoy a chance to fish and win prizes at the Children's Fishing Pond. Fish are cooled and donated to the Clinch Park Zoo for our hungry bears and otters. Fee required. Festival Open Space at Grandview Parkway and Union Street.

9 A.M. - 5 P.M. BEACH VOLLEYBALL TOURNAMENT

Sponsored by AquaFina, and Red Baron Pizza Products in cooperation with WKLTRadio - Double Rock 97.5, 98.9. Four-person tournament play on the beautiful beaches of West Grand Traverse Bay in the 16th annual Festival Volleyball Tournament. Pre-registration is required. Register using our online form or call the Festival Office at 231-947-4230. Men's open, women's open, co-ed open (6 teams per division), recreation (18 teams). Also see the July 7 two-person tournament. Traverse City West End Park Beach Volleyball Courts on Grandview Parkway.

9 A.M. - 1 P.M. TRAVESER CITY RECORD EAGLE OLD MISSION PENINSULA BIKE TOUR

In cooperation with WGTU TV - ABC 29 & 8. Tour the beautiful Old Mission Peninsula and enjoy lunch after the tour. Pre-registration is required. Register using our online form, call the Festival Office at 231-947-4230, or register at Traverse City Central High School between 7:30 and 9 a.m. on the morning of the tour. Starting point is Traverse City Central High School on Eastern Avenue.

9 A.M. - 9 P.M. HOLE-IN-ONE GOLF CONTEST

Sponsored by Traverse City State Bank, Northwest Airlines, Passageways/Carlson Wagonlit Travel, Garland, in cooperation with WLDL Radio - Sunny 101.9. Daily awards and prizes. Daily winners return on Saturday for a chance to win a Toyota Tundra and a Baja sport boat. See Saturday, July 13 for details on the Golf Contest Finals. Bay Meadows Golf Course - follow Grandview Parkway (W) to Division (S) to West Front Street (W); turn right on Cedar Run Road to Barney Road.

9:30 A.M. - 5 P.M. CLINCH PARK ZOO

Visit Northern Michigan's only zoo and see animals indigenous to Michigan. Zoo hours are 9:30 a.m. to 5:00 p.m. daily. Clinch Park Zoo, Grandview Parkway near Cass.

10 A.M. - 4 P.M. CHERRY ORCHARD TOURS AT AMON ORCHARDS

Amon Orchards will conduct tours at their orchards daily on the half hour. Amon Orchards is located two miles North of Acme on U.S. 31. Tour information will be provided at the National Cherry Festival CenturyTel Information/Concierge Message Center located at the Open Space.

10 A.M. - 4 P.M. CHERRY ORCHARD TOURS AT AMON ORCHARDS

Amon Orchards will conduct tours at their orchards daily on the half hour. Amon Orchards is located two miles North of Acme on U.S. 31. Tour information will be provided at the National Cherry Festival CenturyTel Information/Concierge Message Center located at the Open Space.

10 A.M. - 4 P.M. CHERRY ORCHARD TOURS AT AMON ORCHARDS

Amon Orchards will conduct tours at their orchards daily on the half hour. Amon Orchards is located two miles North of Acme on U.S. 31. Tour information will be provided at the National Cherry Festival CenturyTel Information/Concierge Message Center located at the Open Space.

10 A.M. - 4 P.M. CHERRY ORCHARD TOURS AT AMON ORCHARDS

Amon Orchards will conduct tours at their orchards daily on the half hour. Amon Orchards is located two miles North of Acme on U.S. 31. Tour information will be provided at the National Cherry Festival CenturyTel Information/Concierge Message Center located at the Open Space.

10 A.M. - 4 P.M. CHERRY ORCHARD TOURS AT AMON ORCHARDS

Amon Orchards will conduct tours at their orchards daily on the half hour. Amon Orchards is located two miles North of Acme on U.S. 31. Tour information will be provided at the National Cherry Festival CenturyTel Information/Concierge Message Center located at the Open Space.

10 A.M. - 7 P.M. ARTS AND CRAFTS FAIR

Presented by Bay Shore Framing and Downtown Traverse City Association. Juried Arts and Crafts Fair held in lovely downtown Traverse City. A selective Arts and Crafts Fair featuring more than 130 artists from across the Midwest. Purchase unique, local, hand-crafted items and art. Union Street between Grandview Parkway and U.S. Post Office.

10 A.M. - 11 P.M. CENTURYTEL FESTIVAL OPEN SPACE AND INFORMATION AND MESSAGE CENTER

Enjoy the Johnsonville Brat Tent, the Country Fresh Ice Cream / Sara Lee Cherry Pie Pavilion, Pepsi products, Michigan Cherry Committee's Informational Booth, and the Choose Cherry! Farm Market Tent, as well as live entertainment, bingo, and Festival souvenirs, with convenient shipping courtesy of the U.S. Postal Service. Back by popular demand is the Country Fresh Family Oasis Food Court area. Family friendly services include a baby changing and feeding area. The Festival Open Space Park venue also offers promotional displays and samplings from Festival sponsoring companies including CenturyTel, West Bend, Kitchen Craft, and Discover Card. Stop by the Festival's First Aid facility, sponsored by PPOM, with Munson Medical Center and North Flight EMS Paramedic services, or register your 2002 Commemorative Gold Pins and check for lost items, friends, family, or messages at the CenturyTel Information and Message Center.

11 A.M. - 2 P.M. JUNIOR ARTS AND CRAFTS FAIR

Sponsored by Big Boy Restaurants. An opportunity for children 4-12 to create and make interesting arts and crafts projects. Just one of the many free events all week. F & M Park at Railroad and Washington Streets.

11 A.M. - 12 A.M. MIDWAY ARNOLD AMUSEMENTS

Visit Traverse City's own favorite amusements near the Festival Open Space. Grandview Parkway at Union Street.

10 A.M. - 6 P.M. CHILDREN'S FISHING POND

Sponsored by Fifth Third Bank - Grand Traverse, AmericInn and Grand Traverse Tackle Box, in cooperation with WWTW 9&10. Children will enjoy a chance to fish and win prizes at the Children's Fishing Pond. Fish are cooled and donated to the Clinch Park Zoo for our hungry bears and otters. Fee required. Festival Open Space at Grandview Parkway and Union Street.

11 A.M. - 2 P.M. JUNIOR ARTS AND CRAFTS FAIR

Sponsored by Big Boy Restaurants. An opportunity for children 4-12 to create and make interesting arts and crafts projects. Just one of the many free events all week. F & M Park at Railroad and Washington Streets.

11 A.M. - 12 A.M. MIDWAY ARNOLD AMUSEMENTS

Visit Traverse City's own favorite amusements near the Festival Open Space. Grandview Parkway at Union Street.

11 A.M. - 2 P.M. JUNIOR ARTS AND CRAFTS FAIR

Sponsored by Big Boy Restaurants. An opportunity for children 4-12 to create and make interesting arts and crafts projects. Just one of the many free events all week. F & M Park at Railroad and Washington Streets.

11 A.M. - 12 A.M. MIDWAY ARNOLD AMUSEMENTS

Visit Traverse City's own favorite amusements near the Festival Open Space. Grandview Parkway at Union Street.

11 A.M. - 2 P.M. JUNIOR ARTS AND CRAFTS FAIR

Sponsored by Big Boy Restaurants. An opportunity for children 4-12 to create and make interesting arts and crafts projects. Just one of the many free events all week. F & M Park at Railroad and Washington Streets.

11 A.M. - 12 A.M. MIDWAY ARNOLD AMUSEMENTS

Visit Traverse City's own favorite amusements near the Festival Open Space. Grandview Parkway at Union Street.

11 A.M. - 2 P.M. JUNIOR ARTS AND CRAFTS FAIR

Sponsored by Big Boy Restaurants. An opportunity for children 4-12 to create and make interesting arts and crafts projects. Just one of the many free events all week. F & M Park at Railroad and Washington Streets.

11 A.M. - 12 A.M. MIDWAY ARNOLD AMUSEMENTS

Visit Traverse City's own favorite amusements near the Festival Open Space. Grandview Parkway at Union Street.



The U.S. Navy's Blue Angels return to the National Cherry Festival.

Festival Open Space at Grandview Parkway and Union Street.

Union Street. 11 A.M. - 2:30 P.M. TASTE OF CHERRIES FOOD FAIR

Sponsored by Mountain Jack's Restaurant, in cooperation with WLDL Radio - Sunny 101.9

A culinary collection of foods prepared with cherries. Presented in cooperation with Northwestern Michigan College. Taste tickets will not exceed \$6. Parking Lot T,

See Page 28

Advertisement for Bayview Inn featuring 'Make Us Your 1st Stop To The Festival!', dining and cocktails on the deck, and pizza specials every day. Includes a map showing the location at 5074 US 31 N. Acme.

Advertisement for Traverse City Senior Travel listing various trips: July 23-25 - Shipshewana, August 23-25 - Mall of America, August 28 - Meijer Gardens/Grand Rapids, September 2 - Labor Day Bridge Walk, November 29 - December 2 - New York Christmas.

Advertisement for J&S Hamburg featuring 'A Family Tradition For 64 Years!' and 'All-You-Can-Eat BATTERED FISH FRY' for \$7.25. Includes contact information for the booth at the festival.

Advertisement for Lindal Cedar Homes featuring 'Bringing Dreams To Life, For Life.' and 'LINDAL CEDAR HOMES OF TRAVERSE CITY' with contact information.