

Teens, 20-somethings to rock Open Space

By **KIMBERLY WARREN**
Record-Eagle staff writer

With a night all their own, teens and young adults don't have to leave the Cherry Festival to find fun.

From 5 to 11 p.m. on July 8 at the Open Space, activities abound for generations X and Y. Dubbed neXt 2Y Night, a line-up of performers and activities provide the perfect place for hip.

"It's an evening for all young people," said Shannon Sitek, director of teen activities. "We hope the line-up will encourage many who have not ever thought about participating in the festival."

Sponsored by WKPK and Mountain Dew, neXt 2Y will present the sounds of three local bands.

From 5 to 5:45 p.m., Still @ Large will perform. Still at Large is a group of three students from Elk Rapids High School: Andy, a graduating senior, Chris and Mark, both sophomores. The group has a cut on WKLT's fourth rock CD.

At 6 p.m., Blisstripp will take the stage. Blisstripp is a five-man band made up of students from Suttons Bay and Traverse City Central high schools. Winner of a statewide Battle of the Bands competition, Blisstripp brings their mix of rock, funk and hip hop to the Cherry Festival.

At 7:15 p.m., the lip sync contest will begin. Twenty different people or groups will have the chance to compete to be named champions of the Cherry Festival Lip Sync competition. Information and registrations for the lip sync contest can be found at www.cherryfestival.org or by visiting the Cherry Festival office at the Open Space.

The final show of the night, Brian Schram, will start at 9 p.m. Schram, A northern Michigan native who sings and plays the guitar, Schram has even shared the stage with Blessed Union of Souls.

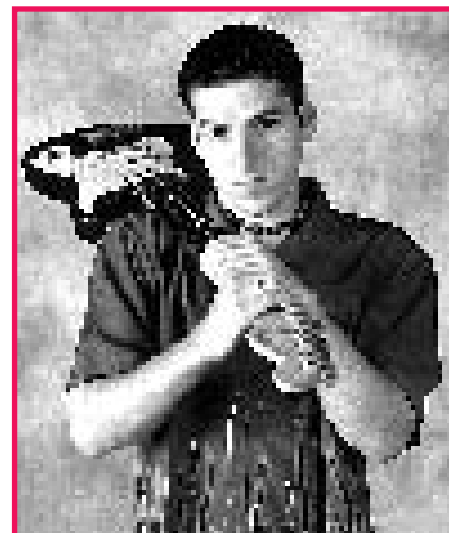
Sitek said it is hard to plan events for teen-agers and young adults because their interests are so varied.

"We hope music will be the bridge that brings everybody together," she said. "It's going to be just a great show."

Along with the music, though, Sitek said they have mixed many other activities. Among them, she lists temporary henna tattooing and possibly a skateboard expo. Visitors will even be able to make their own karaoke videos — for a fee.

"As a community — a festival — we need to embrace the young people and give them things to do," she said.

"They need to be more involved because they are the future of the festival. We hope to see everyone there."



Clockwise from top, Blisstripp, Brian Schram and Still @ Large will be performing Monday, July 8, as part of Teen Night at the Open Space.

Classic Car & Truck Show revs up July 6

By **SARAH CHUBY**
Record-Eagle staff writer

Rev up the engines and come one, come all, to the 5th Annual Cintas Classic Car and Truck Show. Cadillac or Mercedes Benz, 1964 Buick Riviera or 2002 Chevy S-10 — every car and truck make is welcome to partake in the Saturday, July 6, show — as long as they register. The registration fee is \$12 before the show at \$15 at the show.

The show is from 10 a.m. to 5 p.m. at the Civic Center in Traverse City.

Check-in will be from 8 until 11 a.m. Saturday.

There are three main categories for awards — Antique Stock, modified and Corvettes, but don't despair if the 1972 Pinto doesn't fit into one of these. There are many different subcategories.

Trophies will be presented in 38 classes at 4:30 p.m.

For event and registration information call 947-4230.

The show is presented in cooperation with ABC 29&8 and WCCW Radio.

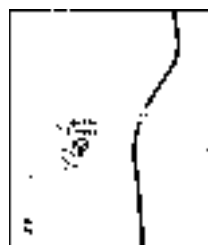


...Living at Glen Eagle Retirement Community

If you or someone you know is looking for gracious, affordable retirement living, here it is at Glen Eagle in Traverse City. Enjoy an active lifestyle in carefree surroundings and a warm welcome from new friends.

Your rent includes:

A choice of studio, one or two bedroom apartment, three delicious meals a day, housekeeping and linen service, paid utilities (except telephone), scheduled transportation, a full activity calendar, special events, pull cord service with Resident Managers 24 hours a day.



Glen Eagle Retirement Community

3950 Sumac Dr.,
Traverse City, MI 49684
(231) 935-4553
www.glen-eagle.net



7/3-655877-CF

"Anything Is Possible"



TURTLE CREEK FOOD COURT

DOUBLE EAGLE RESTAURANT

MISHEEKEH STEAK HOUSE
Daily Specials

Sunday Brunch \$9.95
Friday all you can eat Perch \$9.95

Properties of

Leelanau Sands Casino

Peshawbestown, Michigan - 20 miles north of Traverse City on M-22

Turtle Creek Casino

Williamsburg, Michigan - 4 miles east of Acme on M-72

For more information: **1.800.936.8946**
or online: www.casino2win.com

Owned and operated by the Grand Traverse Band of Ottawa and Chippewa Indians.