



4-STATE FAIRWAYS

2019

.....

Swing by and play at one of these
32 Four State area golf courses
with your Golf Card today!

.....



Brought to you by



GOLFER'S GUIDE

MISSOURI

Center Creek Golf Course

2650 Hwy 37 | Reeds, MO 64859
417-548-7775 | facebook.com/pages/
Center-Creek-Country-Club

Cart Fee: \$12

Total Holes: 9

Yardage: 6,072

Spikes Allowed: No

Season Opening: January 1, 2019

Season Closing: December 31, 2019

Tee Times: No

Features: Rolling Hills and open year-round!

Course Restrictions: Winter-Closed when temperature is below 40 degrees so hours may vary. Also, we are open at 8 am and close at 8 pm during Peak Season from April 1-October 31.



Clinton Country Club

225 NE 100 Rd | Clinton MO 64735
(660) 885-2521 | clinton-country-club.com

Cart Fee: \$22 for two players for 18 holes

Total Holes: 18

Yardage: 6507

Spikes Allowed: Yes

Season Opening: January 01, 2019

Season Closing: December 31, 2019

Tee Times: Yes

Features: Clinton Country Club, is a semi-private 18 hole golf course located near Clinton, Missouri.

The Clinton Country Club was founded over 100 years ago as a 9-hole course located within Clinton City Limits. In 1992, the members built the current 18-hole course, clubhouse, cart sheds, driving range, pool and tennis courts for our members and their families to enjoy. The dining facilities offer both casual and formal options for family, business, and guest entertainment, along with banquet and party facilities which can be rented by the public.

The Club offers both full golf memberships, as well as house, pool, and tennis memberships for individuals and families. There is currently a special membership price for first time members which is almost half off normal membership dues. We also offer a special "dual membership", for those who already belong to another golf club, but who visit the Clinton area frequently or live in a nearby town. Please visit our website, www.clinton-country-club.com for more information and photos.



Course Restrictions: The golf course is open seven days a week, however the club



house is closed on Mondays. You must see Rodney Hunter, Superintendent before playing on Mondays. Play must occur after 1:00 pm, on any day of the week. A tee time, and a cart rental fee are mandatory. Dates of play and tee times are subject to course availability. Please call in advance to reserve playing time.

Elk River Country Club

P.O. Box 488 | Noel, MO 64854
417-475-3208

freewebs.com/elkrivergolfcourse

Cart Fee: 10.00

Total Holes: 9

Yardage: 3354

Spikes Allowed: Yes

Season Opening: January 01, 2019

Season Closing: December 31, 2019

Tee Times: Yes

Features: Come and enjoy the scenic beauty of the Ozarks while playing a round of golf here at the Elk River Golf Course, located in Noel, Missouri.

Course Restrictions Not valid during tournaments.



Golf at Old Kinderhook, Lake of the Ozarks Golf Course

58 Club Place | Camdenton, MO 65020
(573) 317-3573 | oldkinderhook.com/golf

Cart Fee: We will offer BOGO round of golf. After 2pm Sunday-Wednesday

Total Holes: 18

Yardage: 6726

Spikes Allowed: Yes

Season Opening: January 01, 2019

Season Closing: December 31, 2019

Tee Times: Yes

Features: Old Kinderhook, a Tom Weiskopf signature course, is a 6,726-yard par 71 featuring Zoysia tees and fairways with large bent grass greens. It will challenge the most serious golfer, yet plays on the friendly side. The course is renowned for its unsurpassed drama: valleys, waterfalls, hills, trees and

water hazards, plus its beautiful lake setting. The elevation changes and breathtaking views will thrill you at every hole.

The 18-hole, par 71, golf course is open to the public year-round. It is the centerpiece of the 700+ acre Old Kinderhook master-planned community serving residents and guests. Routed through rugged Ozark hills, the course makes the most of nature's beauty.

Course Restrictions: We will offer BOGO round of golf. After 2pm Sunday-Wednesday.

Great Life Golf & Fitness

16744 Hwy 64 | Lebanon, MO 65536
417-532-2901 | lebanonmissourigolf.com



Cart Fee: \$20

Total Holes: 18

Yardage: 6,585

Spikes Allowed: Yes, soft spikes

Season Opening: January 1, 2019

Season Closing: December 31, 2019

Tee Times: Yes

Features: Formerly Lebanon Community Golf and Country Club... a semi-private, eighteen hole championship golf course located two miles west of Lebanon, Missouri and nine miles east of Bennett Spring State Park (great trout fishing) on State Highway 64 West. The Lake of the Ozarks, a vacation, fishing and boating destination, is only thirty miles north as well. We are open year round, with the exception of Thanksgiving and Christmas Day, weather permitting.

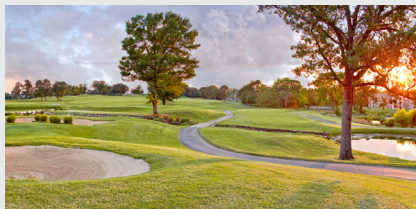
The course features a driving range, putting green, and chipping green with three sets of tees stretching to 6435 yards. Gently rolling hills offer a track that affords elevation changes, large contoured greens, water hazards, a large "sinkhole" on the Par 3, Sixteenth hole, and numerous options in shot selection on the Par 4's and 5's. Feel free to peruse our site to gather more information concerning Tee Times and Rates, Current Golf Specials, Golf Course Layout and Information, and Links to Area Tourism Information. Our goal is to be an exceptional, player friendly golf facility offering high quality service to both members and guests. We welcome individuals, families, and all groups to our Club. We look forward to your visit. Come see us soon!

Course Restrictions: Please call in advance or book a tee time online!



Holiday Hills Resort & Golf

630 E. Rockford Dr. | Branson, MO 65616
417-334-4840 | holidayhills.com



Cart Fee: \$20 Anytime

Total Holes: 18

Yardage: 5771

Spikes Allowed: Yes

Season Opening: January 1, 2019

Season Closing: December 31, 2019

Tee Times: Yes

Features: Come join the fun at Holiday Hills Golf Club, a beautiful 18-hole golf facility. Holiday Hills has recently completed a multi-million dollar total re-build. Their goal was to build a new championship 18-hole course that the vast majority of golfers would enjoy, while at the same time offering a stiff challenge for more competitive golfers from the back tees. What was once a nine-hole course, is now 18-holes with par 68, 5,771 yards with Hybrid Bermuda Fairways and Tees and Bent grass Greens. There are over 50 large bunkers, and water comes into play on five holes. Holiday Hills has a Class A Golf Professional on site that offers lessons and clinics to teach you how to play golf or just help you improve your game. The staff at Holiday Hills invites you to play a "round" with them. The scenery alone is breathtaking. Your round of golf at Holiday Hills will promise to be a golfing adventure you won't forget!

Course Restrictions: Valid any time after 11 am. Please call in advance or book a tee time on our website. NOT VALID WITH ANY OTHER OFFER.

Island of the Green Golf Club

169 Country Club Dr. | Republic, MO 65738
(417) 732-7622 | www.islandgreengolfclub.com

Cart Fee: Please call for price.

Total Holes: \$18

Yardage: 7034

Spikes Allowed: Yes

Tee Times: Yes

Season Opening: January 1, 2019

Season Closing: December 31, 2019

Features: Island Green is one of the Ozark's most beautiful golf facilities. Built on the rolling acres just south of Republic, MO. Designed by noted course architect Jerry Slack, Island Green is an 18-hole golf course featuring lush Bermuda Grass fairways and meticulously maintained Bent Grass greens. Prepare yourself for the extraordinary shot to our 15th green, an Island surrounded by water, the hole is our course's namesake. The course will challenge the most dedicated of players and provide endless enjoyment for every level of skill.

Course Restrictions: Not valid during tour or holidays. Limit one time per use. Please call in advance or book a tee time on our website to reserve playing time.

Mount Vernon Golf Course

MO-174 | Mount Vernon, MO 65712
(417) 466-7831 | www.mtvernon-cityhall.org

Cart Fee: \$10

Total Holes: 18

Yardage: 5636

Spikes Allowed: Yes

Season Opening: January 1, 2019

Season Closing: December 31, 2019

Tee Times: Yes

Features: Putting green, snack bar, and pro shop.

Course Restrictions: LIMIT ONE-TIME USE. Not valid on holidays.

Neosho Golf Course

1850 Clubhouse Rd. | Neosho, MO 64850
(417) 451-1543 | www.neoshomo.org/residents/neosho_golf_club/index.php

Cart Fee: \$12 for 18 holes, \$6 for 9 holes

Total Holes: 18

Yardage: 2934

Spikes Allowed: Yes, Soft Spikes only

Season Opening: January 1, 2019

Season Closing: December 31, 2019

Tee Times: Yes

Features: The Neosho Municipal Golf Course is a beautiful 18-hole facility with two distinctively different nine-hole layouts. The original 9-hole course was constructed in 1924 by famous golf architect Perry Maxwell, who designed such golf courses as Southern Hills in Tulsa, Oklahoma.

Whether you're an accomplished golfer or a novice golfer, you are sure to enjoy the affordably priced golf that the Neosho Municipal Golf Course has to offer. Located just 15 minutes south of Joplin and open seven days a week, we are ready to serve your golfing needs.

Course Restrictions: Open year-round. Please call in advance for tee time.

North Terra Golf Course

1724 N. Terra Dr. | West Plains, MO 65775
(417) 256-9824 | www.facebook.com/North-TerraGolfCourse/

Cart Fee: \$20

Total Holes: 18

Yardage: 6178

Spikes Allowed: Yes

Season Opening: January 1, 2019

Season Closing: December 31, 2019

Tee Times: No



Rangeline Golf Center

2001 N. Rangeline Rd. | Joplin, MO 64801
417-624-0400 | <https://www.facebook.com/pages/Rangeline-Golf-Center>



Cart Fee: \$8.00 for 9 holes

Total Holes: 9

Yardage: 1753

Spikes Allowed: Yes

Season Opening: January 1, 2019

Season Closing: December 31, 2019

Tee Times: No

Features: Open all year-round, 7 days a week. We close 30 minutes before dusk. Includes a beautiful driving range and miniature golf course for the whole family.

Course Restrictions: LIMIT TO ONE-TIME USE ONLY!

Schifferdecker Golf Course

506 S. Schifferdecker Ave. Joplin, MO 64801
(417) 624-3533 | www.joplinmo.org/727/Schifferdecker-Golf-Course

Cart Fee: 12.00

Total Holes: 18

Yardage: 6100

Spikes Allowed: Yes, Soft spikes only

Season Opening: February 01, 2019

Season Closing: December 31, 2019

Tee Times: Yes

Features: Well-groomed greens, Bermuda fairways, and reasonable fees make Schifferdecker the most popular golf course

in the area. Located on historic Route 66 at 7th Street and Schifferdecker Road, the par 71 course is open year-round and hosts many golf tournaments throughout the year.



A state-of-the-art golf simulator added in 2017, gives players a chance to play world renowned courses with the comfort and convenience of being indoors. The stocked pro shop has all your golfing necessities. You can also enjoy a drink and snack in our Clubhouse.

Course Restrictions: Sleeved shirts and shoes are required. No private coolers and each player must have their own set of golf clubs.

St. James Golf Club

17780 Missouri Highway 8 | St. James, MO 65559
(573) 265-8688 | <https://www.golfstj.com>

Cart Fee: \$10 for 9 holes, \$15 for 18 holes

Total Holes: 9

Yardage: 3133

Spikes Allowed: Yes, Soft spikes only

Season Opening: March 01, 2019

Season Closing: October 31, 2019

Tee Times: No

Features: Located in the heart of the Ozarks, the St. James Golf course is a semi-private course open to the public. The course offers 9 holes with different tee boxes on the back to play like 18. With Bermuda fairways, scenic views, and some of the best greens in the area, we know you will enjoy your time here at St. James Golf Club.

Course Restrictions: Soft spikes only. We are open full time March through October 7:30 am-dusk, and part time November

through February. If you have any questions about the course or available tee times, please call the clubhouse @ 573-265-8688. Card is valid anytime except on holidays. Please call ahead to confirm that there are no events or tournaments going on.

Sullivan Golf Club

11 Country Club Dr | Sullivan MO 63080
(573) 468-5803 | www.sullivangolfcourse.com



Cart Fee: \$18

Total Holes: 18

Yardage: 6175

Spikes Allowed: Yes

Season Opening: January 1, 2019

Season Closing: December 31, 2019

Tee Times: Yes

Features: Sullivan Golf Course is an 18-Hole Public Golf Course in Sullivan, MO. The course offers Daily Green Fee play, as well as, Annual Memberships and hosts both Charity & Corporate Golf Outings. Owned by the city of Sullivan and managed by Walters Golf Management the 6182 yard, par 71 course offers affordable rates, a junior golf program and a driving range with lessons available.

Course Restrictions: Open year-round, weather permitting, from sun-up to sundown. Card can be used Monday-Friday anytime, but ONLY after 1 pm on weekends. MUST CALL 24 HOURS IN ADVANCE TO BOOK A TEE TIME TO PLAY!!!



Swing Right Golf

444 E. Farm Rd 192 | Springfield MO 65810
(417) 882-1222 | swingrightgolf.net



Cart Fee: A round of 18 for \$15

Total Holes: 18

Yardage: N/A

Spikes Allowed: Yes

Season Opening: January 01, 2019

Season Closing: December 31, 2019

Tee Times: No

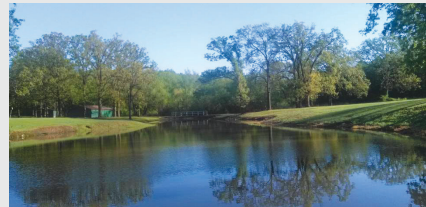
Features: We offer a driving range, miniature golf, simulators, and also disc golf. Whether the sun is shining, the snow is falling or the sun is on its way down, we have you covered. We have 14 tee mats set out for your help in satisfying your golf addiction. 7 of our mats are under cover and even have heaters available for the chilly days and nights. The range is lit up so even when the sun drops you can watch your ball as it slices through the air, in which case keep practicing you'll get it

straightened out. If you're looking to improve your game and need a little extra help, give us a call and we'll get you hooked up with a local golf professional to build your skill. In the summer of 2018 we installed an 18 hole Disc Golf course that goes around our Driving Range. The distance for our baskets run from 130 feet up to 420 feet, with an average distance of 232 feet, and a vast amount of changes in elevation. You will play through the trees as well as opportunities of long open shots.

Course Restrictions: Please call first to set up a time. We are open year-round. Winter hours are 12 pm- 5 pm Sunday and Monday, 10 am-8 pm Tuesday-Saturday. After April 1st, hours change to 12 pm-6 pm Sunday and Monday, and 10 am-10 pm Tuesday- Saturday.

Willow Springs Thomas F. Benyo Municipal Golf Course

1708 State Route 137 | Willow Springs MO 65793
(417) 274-1424 | willowspringsmo.com/151/Golf-Course



Cart Fee: 12.00 for 9 holes 18.00 for 18 holes

Total Holes: 9

Yardage: 6164

Spikes Allowed: No

Tee Times: No

Season Opening: February 05, 2019

Season Closing: February 01, 2020

Features: We have some of the best Tees and Greens in our area. We are currently working on getting zoysia grass in our fairways.

Course Restrictions: We do not have a course attendant and need to contact Dave Guyll @ 417-274-1424 so I can meet you up here and show you the course.

Windmill Ridge Golf Course

117 S. Lincoln Ave. Monett, MO 65708
(417) 235-6076 | www.cityofmonett.com/city_departments/golf_course



Cart Fee: \$16 for 18 holes

Total Holes: 18

Yardage: 6400

Spikes Allowed: Yes

Season Opening: January 01, 2019

Season Closing: December 31, 2019

Tee Times: No

Course Restrictions: LIMIT ONE-TIME USE PER CARD!! Open from 9 am until dark in the winter months, and 7:30 am-dark in the summer. CARD ONLY VALID MONDAY-FRIDAY. CARD NOT VALID ON WEEKENDS OR HOLIDAYS.

OKLAHOMA

Cherokee Grove Golf Club

519 Quail Run Road | Grove, OK 74344
(918) 786-4100 | www.facebook.com/Cherokee-Grove-Golf-Club



Cart Fee: \$5.00 for 9 holes, \$8.00 for 18 holes

Total Holes: 9

Yardage: 2878

Spikes Allowed: Yes

Season Opening: January 01, 2019

Season Closing: December 31, 2019

Tee Times: No

Features: Includes a beautiful range and putting green available to warm up before hitting the course. Hours are from 7:30 am until dusk. We are open 7 days a week every day except for Christmas Day. No tee times are required, but please call in advance to make sure there isn't a tournament going on.

Course Restrictions: Limit one time use per cardholder.

Flint Ridge Golf Course

1 Pioneer Court | Kansas, OK 74347
(918) 597-2101 | www.flintridgeresort.com/golf

Cart Fee: 9 holes for \$9.00 or 18 holes for \$18.00

Total Holes: 9

Yardage: 2400

Spikes Allowed: Yes

Season Opening: January 01, 2019

Season Closing: December 31, 2019

Tee Times: No

Features: Beautiful golf course! Part of the Flint Ridge Resort overlooking the Illinois River.

Course Restrictions: Hours of Operation change to 8 am-6 pm starting April 1st.

Meadowlake Golf Course

2013 W Rupe Ave | Enid, OK 73703
580-234-3080 | meadowlakecourse.com



Cart Fee: \$15.27

Total Holes: 18

Yardage: 6700

Spikes Allowed: No

Season Opening: January 01, 2019

Season Closing: December 31, 2019

Tee Times: Yes

Features: Bent grass greens, Bermuda grass fairways, tree-lined course with water coming into play several times on the back 9, 4 different sets of tees, fair and challenging course, well-manicured.

Peoria Ridge Golf Course

10301 S. 600 Rd. | Miami, OK 74354
(918) 542-7676 | peoriaridge.com



Cart Fee: \$16

Total Holes: 18

Yardage: 6960

Spikes Allowed: Yes

Season Opening: January 01, 2019

Season Closing: December 31, 2019

Tee Times: Yes

Features/Course Restrictions: Peoria Ridge Golf Course is an 18 hole championship golf course owned by the Peoria Indian Tribe of Oklahoma. The course was designed by Bland Pittman who also designed Battle Creek Golf Club and Bailey Ranch Golf Club both located in the Tulsa Metro area.

Construction on the course began in September of 1998, and the course opened all 18 holes in the Spring of 2000. The course features five sets of tee boxes to accommodate the skill level of any golfer. The rolling hills and large bodies of water make for some breathtaking vistas and a challenging round of golf.

Peoria Ridge has a first class practice facility with a driving range, putting and chipping greens. The golf course hosts numerous outings during the year and is an ideal location for groups both large and small. Peoria Ridge Golf Course also hosts the NGA Hooters Pro Golf Tour in August.

The Woods Golf Club, LLC

11872 S 274th E Ave | Coweta, OK 74429
(918) 486-3117 | woodsgolfclub.com

Cart Fee: \$15 weekdays, \$16.60 weekends

Total Holes: 18

Yardage: 6122

Spikes Allowed: Yes

Season Opening: January 01, 2019

Season Closing: December 31, 2019

Tee Times: No

Features: Bring your friends here to The Woods Golf Club LLC for a wonderful day of golfing on our 18-hole Woods course. Our course has a ranking of 72.8 and a slope rating of 124. You'll love the woody scenery and calm atmosphere that our course provides. The Woods Golf Club LLC has been providing the residents of Coweta with better golf experiences since 1991. Our course was designed by Jeff Hughes and is considered to be one of the most beautiful places to play in the state.

Course Restrictions: Open from dawn until dusk all year-round.

KANSAS

Baxter Springs Golf & Country Club

2819 Hale Irwin Road Baxter Springs, KS 66713
(620) 856-3538 | www.kansasgolf.org/club-services/course-directory/baxter-springs-cc/



Cart Fee: \$7 for 9 holes, \$10 for 18 holes

Total Holes: 9

Yardage: 6181

Spikes Allowed: Yes

Season Opening: January 01, 2019

Season Closing: December 31, 2019

Tee Times: No

Course Restrictions: Open year-round, 8 am-sundown.

Cimarron Valley Golf Club

433 US Hwy 56 | Satanta, KS 67870
(620) 649-2202 | www.facebook.com/CVGCSK



Cart Fee: \$20

Total Holes: 9

Yardage: 6385

Spikes Allowed: Yes

Season Opening: January 01, 2019

Season Closing: December 31, 2019

Tee Times: No

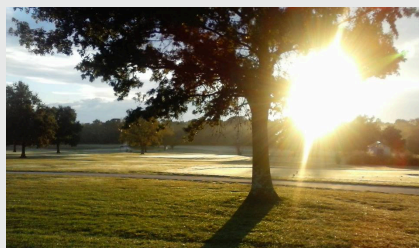
Features: This wonderful 9 hole golf course carved out of the Cimarron River features rolling fairways & beautiful greens. Truly a hidden gem in SW Kansas.

Course Restrictions: Hours of operation are from 8 am until dark. We are open year-round, as long as the course temperature is above 45 degrees.

Crawford Hills, Girard Municipal Golf Course

205 E. Hwy 47 | Girard, KS 66743
620-724-8855

girardkansas.gov/departments/golf-course



Cart Fee: \$10.00 for 9 holes, \$15.00 for 18 holes

Total Holes: 9

Yardage: 3025

Spikes Allowed: No

Season Opening: January 01, 2019

Season Closing: December 31, 2019

Tee Times: No

Features: Crawford Hills features bent grass greens, Bermuda grass fairways and tees forgiving rough areas and the majestic views of South East Kansas. We offer various leagues, tournaments, and great opportunities to host your next golf outing or event. Season passes, cart storage, and trail fee are just a few of the amenities offered. Come see all that we have to offer. "There is always time for nine".

Course Restrictions: Not redeemable for league or tournament play.

Emporia Golf Course

1133 S. Hwy 99 | Emporia, KS 66801
620-343-5610 | emporiagolfcourse.com



Cart Fee: \$14 per person for 18 holes

Total Holes: 18

Yardage: 6600

Spikes Allowed: Yes

Tee Times: Yes

Season Opening: January 01, 2019

Season Closing: December 31, 2019

Features: For over 40 years, Emporia Golf Course in Emporia, Kansas has welcomed local golfers to play a round of golf on its championship layout. Opened in 1970 and owned by the City of Emporia, the course is known as the hometown favorite location for a round of golf players of all ages and skill levels can enjoy.

Our gorgeous municipal golf course is located midway between Wichita and Kansas City in eastern Kansas. The Par 71 course measures over 6600 yards from the back (blue) tees. The manageable length the golf course along with our affordable public rates make Emporia Golf Course your best choice for outdoor recreation. The course features many rolling hills, magnificent fairways, native fescues, and provides a healthy challenge for all golfers.

Course Restrictions: Tee times required on weekends and holidays from March 1 to October 31.

Quail Ridge Golf Course

3805 Quail Ridge Dr. | Winfield KS 67516
(620) 221-5645 | golfquailridgeonline.com

Cart Fee: Flat cart fee of \$15 per person for 18 holes or 9 holes

Total Holes: 18

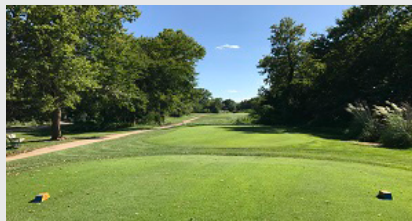
Yardage: 6826 from the Championship Tees

Spikes Allowed: Yes

Season Opening: January 01, 2019

Season Closing: December 31, 2019

Tee Times: Yes



Features: Designed by Tulsa architect Jerry Slack Quail Ridge opened in 1992. For the past 2 years under the care of course superintendent Jeff Aldrich Quail Ridge has matured into one of the most celebrated golf courses in the area. Golf Digest has regularly honored Quail Ridge as a 4 1/2 Star course on its places to play list. Quail Ridge was also honored in Golf Digest as one of the best public golf bargains in the United States. Expect to be treated to a great day of golf when you travel one mile south of Winfield on US 77 to Quail Ridge Golf Course.

Course Restrictions: Valid Monday-Thursday anytime, and after 11:00 am on Friday, Saturday, and Sunday.

Wellington Golf Club

1500 W. Harvey Ave. Wellington, KS 67152
(620) 326-7904 | www.wellingtongolfclub.com



Cart Fee: \$12 for 9 holes, \$24 for 18 holes

Total Holes: 18

Yardage: 6301

Spikes Allowed: Yes

Tee Times: Yes

Season Opening: January 01, 2019

Season Closing: December 31, 2019

Features: Wellington Golf Club is one of the top destinations for outings and tournaments in the Wichita area. Tournament and outing organizers know that just booking an outing at WGC means excellent value and service. The staff can organize everything for your outing including score cards, rule sheets, cart tags, scoring, prizes, meals and beverages. WGC specializes in outings ranging from 20-144 players. Events include charity events, corporate outings, and championships for more serious players. Our large tournament pavilion is perfect for meals before or after the event and is available for a nominal fee. Don't forget to stop by the Clubhouse and say hello. We can't wait to meet you!

Course Restrictions: Not valid during tournaments. Please call in advance before making a reservation.

Woodland Hills Golf Course

2414 S. Horton Fort Scott, KS 66701
(620) 223-5060 | www.fscity.org/160/Golf-Course



Cart Fee: \$13 per player

Total Holes: 18

Yardage: 6136

Spikes Allowed: No

Season Opening: January 01, 2019

Season Closing: December 31, 2019

Tee Times: Yes

Features: Woodland Hills is a tight, tricky course that runs through the hills and woodlands of South East Kansas. The course features small, fast bent grass greens and lush Bermuda fairways.





ARKANSAS

Deer Trails Country Club

11707 Custer Blvd. | Fort Smith AR 72916
(479) 478-6971 | www.deertrailsccl.com

Cart Fee: \$16 for 18 holes

Total Holes: 9 with 18 tee boxes

Yardage: 5900

Spikes Allowed: Yes

Tee Times Available: No

Season Opening: January 01, 2019

Season Closing: December 31, 2019

Features: Deer Trails Country Club is a 9-hole course in the naturally beautiful, park-like setting of Chaffee Crossing in Fort Smith, Arkansas. The course is open to the public seven days a week. Deer Trails offers excellent hybrid Bermuda greens.

This is a good golf course for the everyday golfer. Deer Trails Golf Course hosts multiple leagues and tournaments throughout the season. Guests can enjoy breakfast and lunch in the clubhouse grill. Driving range, putting green and a chipping area are also available.

Course Restrictions: Open year-round 8 am until dusk.

Holiday Island Country Club

1 Country Club Dr. | Eureka Springs, AR 72631
479-253-9511 | holidayisland.us/golf/

Cart Fee: \$13 for 18 holes, \$8 for 9 holes

Total Holes: 18 holes on Championship Course, 9 holes on Executive Course

Yardage: 6059 yards on the Championship Course, 1832 yards on the Executive Course

Spikes Allowed: Yes

Tee Times: Yes

Season Opening: January 01, 2019

Season Closing: December 31, 2019

Features: Choosing the correct club and playing the correct shot will challenge golfers at all levels. In addition we have the most unique driving range in the state. The breathtaking scenery of the Ozark Mountains and the quiet will allow you a peaceful golfing experience. We are open year round and have relatively mild winters enabling golfing every month of the year. Holiday Island offers golf tournaments for corporate or group outings and is perfect for family reunions.

The championship course includes 18 holes of scenic beauty riding the crest of the oldest range of mountains on this continent. Many of the tees and greens have a panoramic view that is amazing. The course features narrow tree-lined fairways often sloping from left right, providing a sporty type of play. The executive

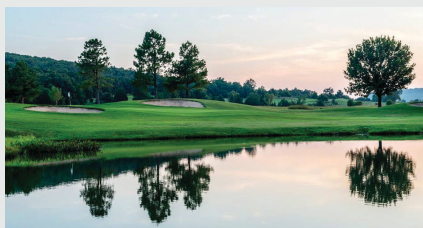


course plays 1,832 yards. It has three par 4 holes and six par 3 holes with a total par of 30. The yardages on each hole range from 115 to 345 yards. The 9-hole course is located on the lake and is surrounded with a view of high bluffs and thickly wooded areas.

Course Restrictions: Please call for tee times up to one week in advance. Hours will be extended starting in April.

Stonebridge Meadows Golf Club

3495 East Goff Farm Road | Fayetteville AR 72701
(479) 571-3674 | stonebridgemeadows.com



Cart Fee: \$25

Total Holes: 18

Yardage: 7200

Spikes Allowed: Yes

Tee Times: Yes

Season Opening: January 01, 2019

Season Closing: December 31, 2019

Features: Located in Fayetteville, Arkansas, Stonebridge Meadows has a reputation as the golf course you will want to play time and again. Our course is steep in history as it is laid out on what was once a Civil War hospital and then later a thoroughbred horse farm which

trained several award winning horses like “No Double.” But there is much more than that for those who truly love golf. Holes are gently placed into the curving valleys on the site; the greens are subtly contoured; the bunkers are strategically placed and the course offers a variety of different shot making opportunities through various elevation changes. Course Designer Randy Heckenkemper has crafted 18 unique holes that will leave you anxious to play Stonebridge Meadows again and again

Course Restrictions:

LIMIT ONE TIME PER USE ONLY.

Only valid Monday-Wednesday. The golf club is open year-round, sun-up to sundown and weather permitting. Closing time is at dusk, and that will vary year-round.

MUST CALL IN ADVANCE BEFORE USING THIS CARD TO MAKE SURE THERE IS AVAILABILITY AT THE COURSE!!!



4-STATE
FAIRWAYS

2019

Top 10 Reasons Kids Should Play Golf



1 Develop Life Long Benefits: Benefits of golf include making life-long friends and learning a game that can be played.

2 Spend Quality Time with Family: Golf can be an event around which all family members can gather for several hours. It is a great opportunity for parents to provide positive feedback and encouragement to children.

3 Spending Time Outdoors: Walking and being active in the outdoors allows for breathing in fresh air and establishes healthy exercise habits, far beyond indoor video games or television.

4 Business Skills: In addition to etiquette and the ability to play comfortably with new acquaintances, golf teaches self-confidence, improves the ability to work with numbers, and applies problem solving skills that are critical in business.

5 Anyone Can Play: Men, women, children, people from all over the globe and all walks of life come together on a golf course. The diversity found on a golf course opens young golfers to a broader view of the world and all people.

6 Self-Improvement: Golf challenges the player toward constant self-improvement. Players analyze what they did well and what has to change to improve. Players develop habits of self-improvement by self-analysis skills, seeking professional instruction, and accepting critiques from others.



Daryn Buholtz, golf pro at Schifferdecker Golf Course, helps Trenton Loyd, 10, Joplin, with his swing during the 2017 Joplin Golf Foundation's Joplin Junior Golf Tee It Up Program at Rangeline Golf Course. Globe/Roger Nomer

7 Etiquette and Values: Golf has a rich tradition of etiquette which lives on today. Playing golf teaches youth how to behave towards self and others, and imparts values such as truthfulness and strength during adversity.

8 Health: Golf is an active game and is less injury prone than contact sports. Conditioning for golf improves strength of core muscles that support the spine, improves flexibility, and allows participants the opportunity to be active and fit.

9 Controlling Emotions: In golf there are achievements and disappointments. Learning from mistakes and overcoming obstacles improves a player's game, and teaches them to optimistically carry out the same pattern in life.

10 Fun: Young people grow up too quickly in today's busy, technological world. Gathering with friends to play golf gives young golfers the opportunity to spend enjoyable times in friendly competition or collegial companionship.

